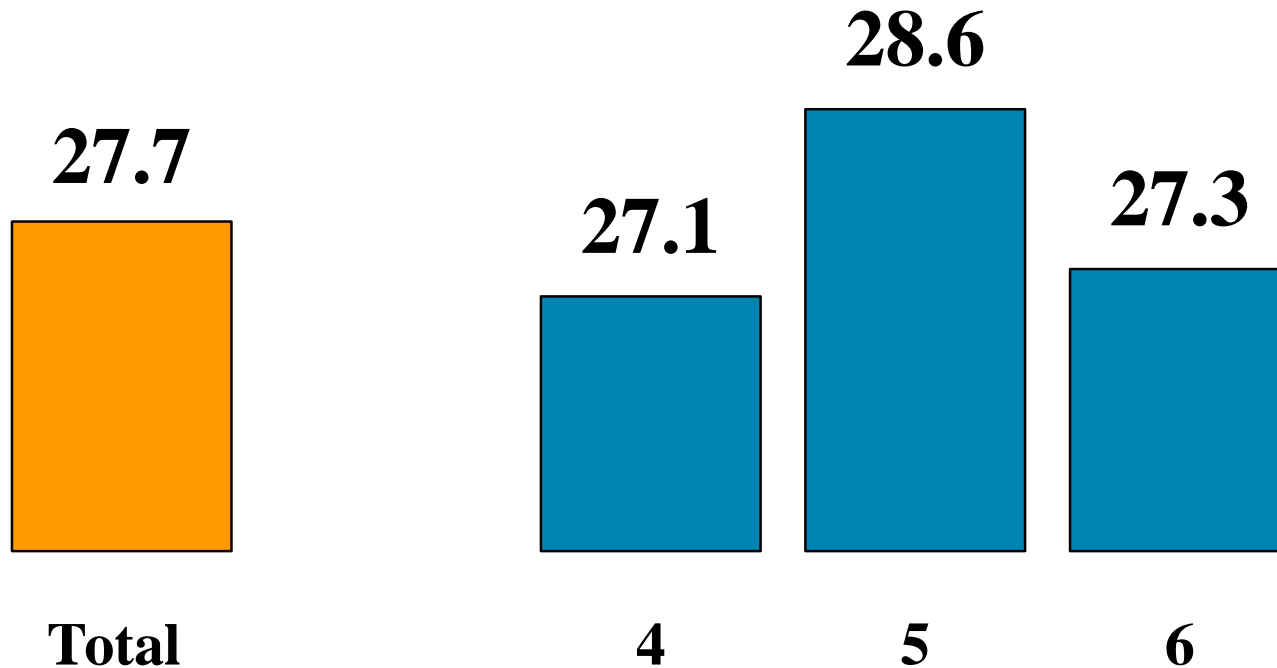


# The **Average** Number of **Assets**

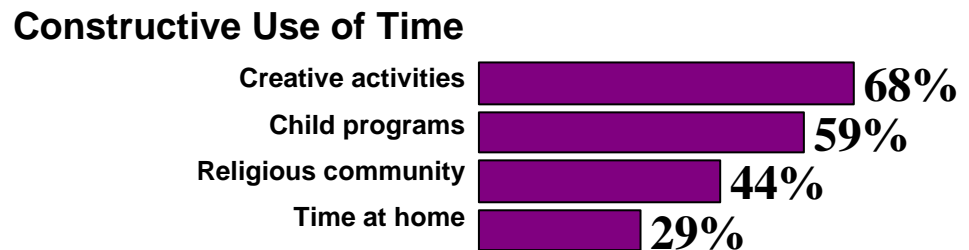
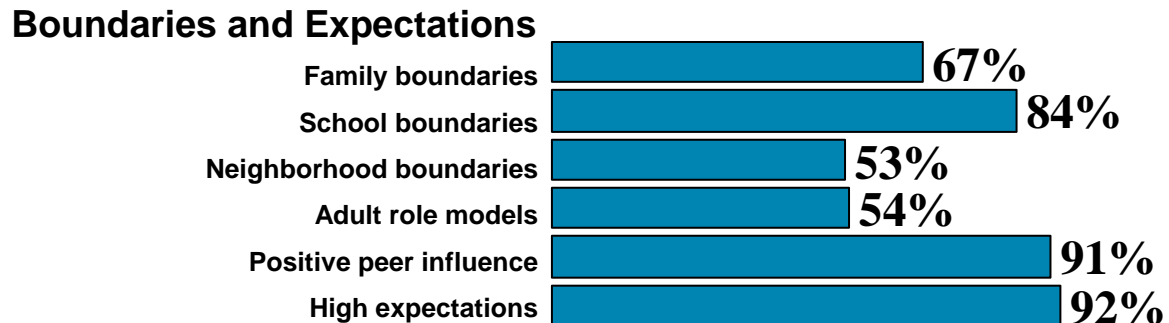
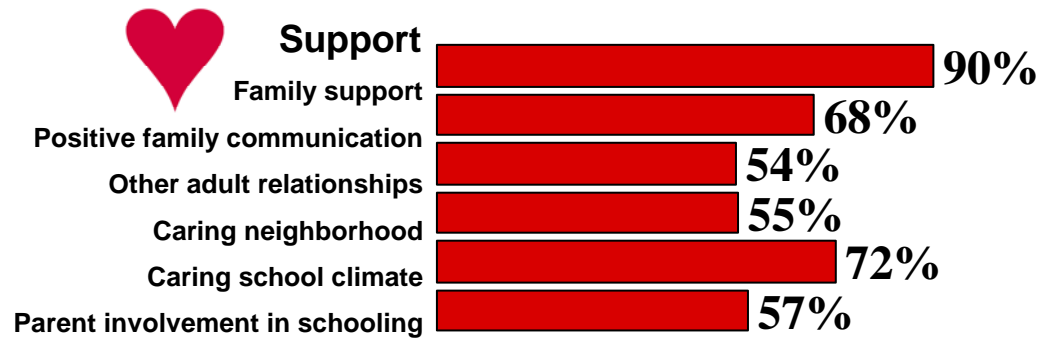
## Your Youth Report

(Figure 3 from your Full Report)



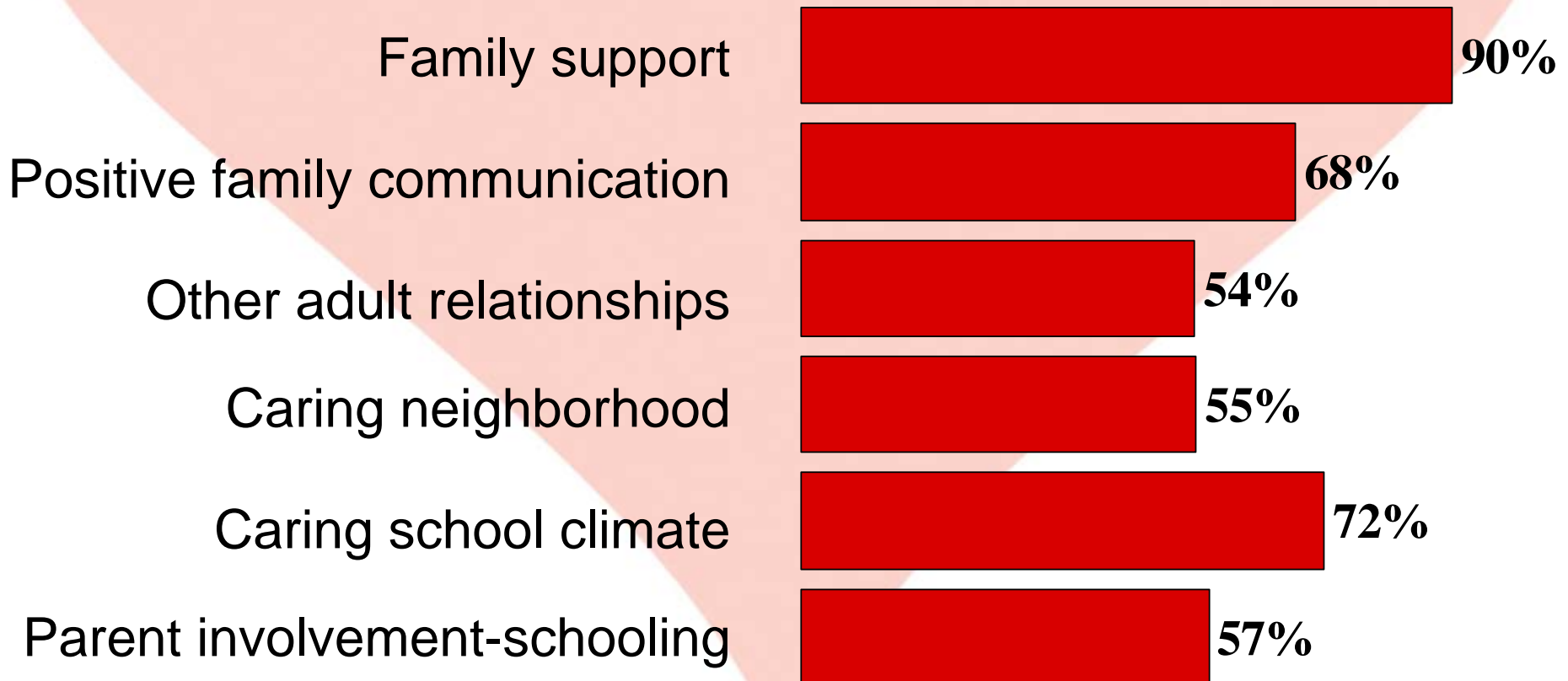
# Percent of Youth Reporting Each of 20 External Assets

(Figure 4 from your Full Report)

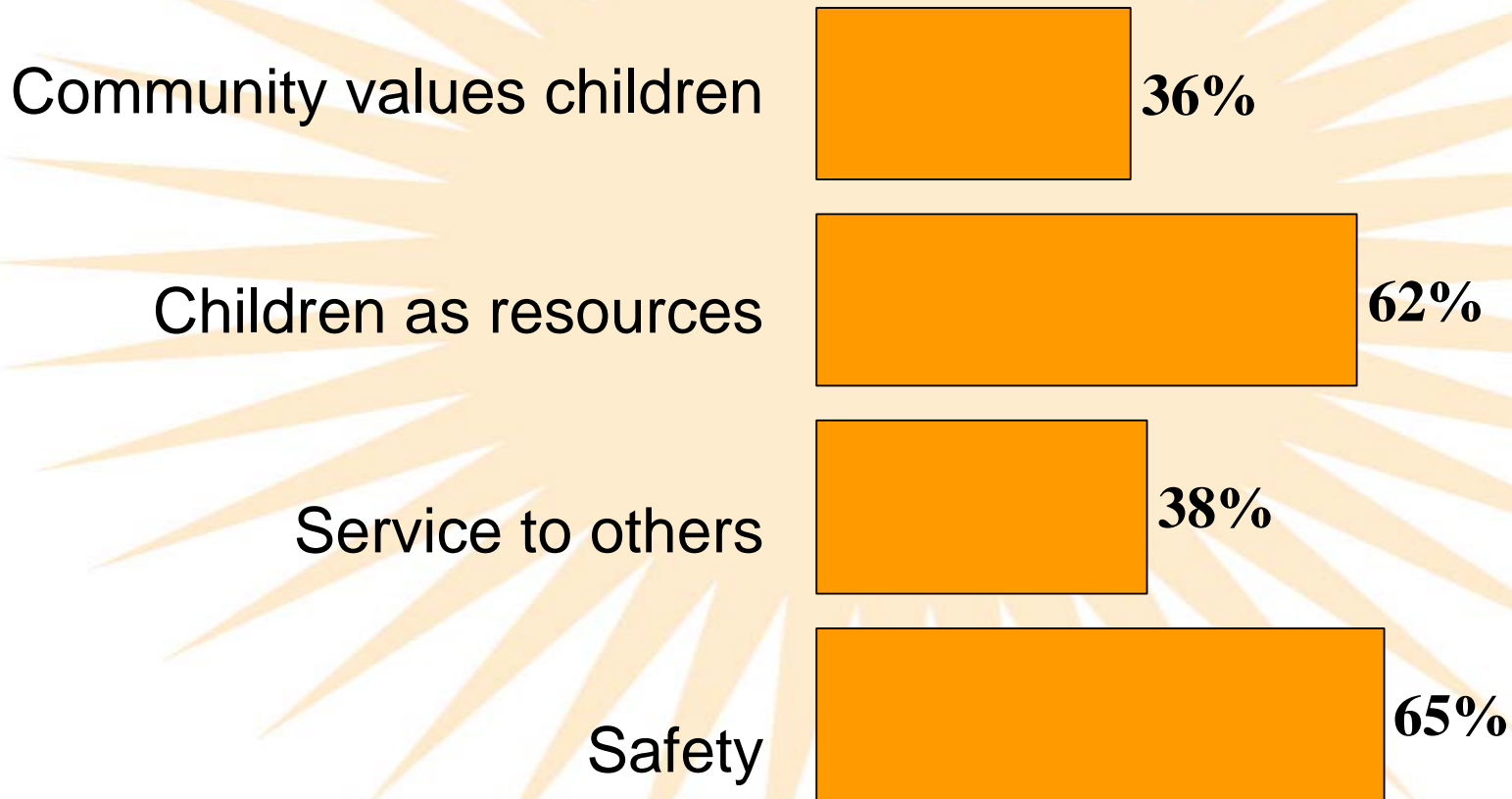


0% 20% 40% 60% 80% 100%

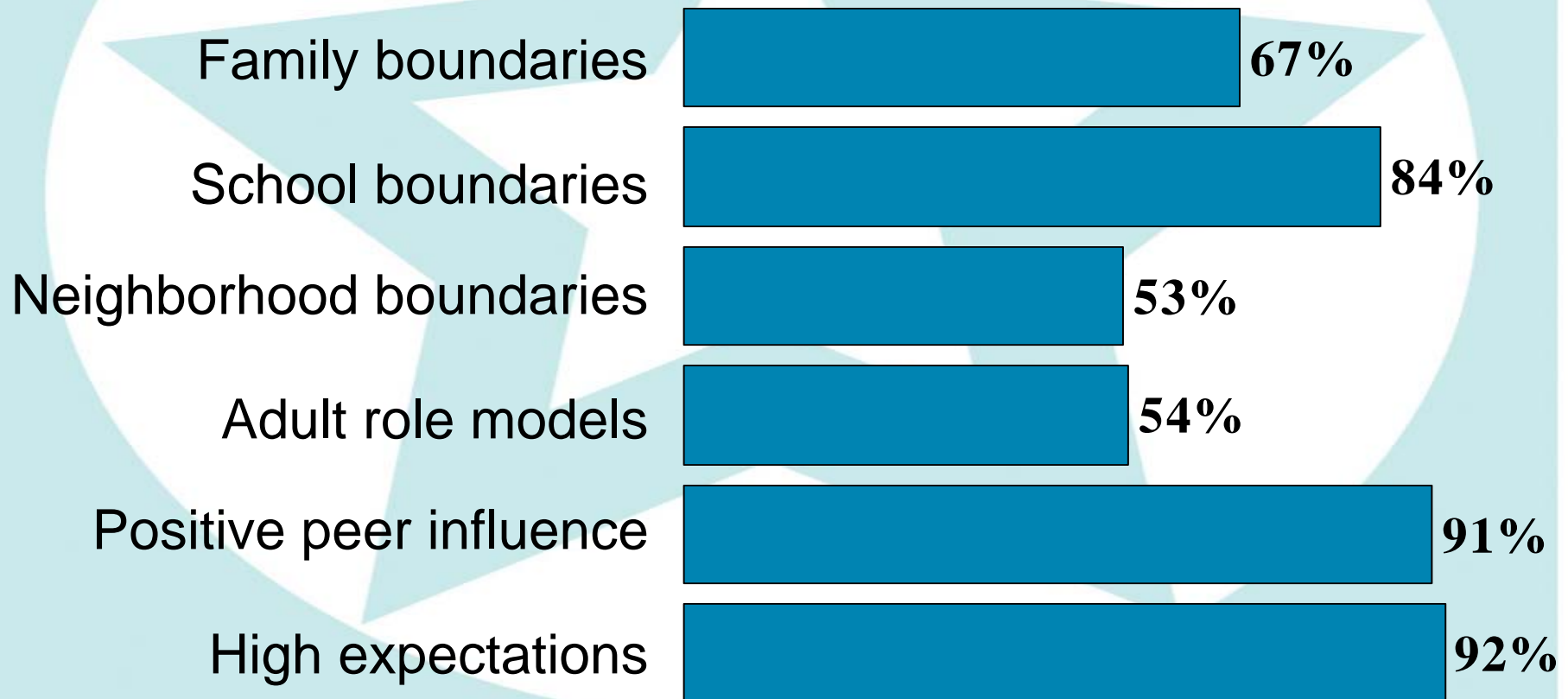
# The Support Assets - Percentages Your Youth Report



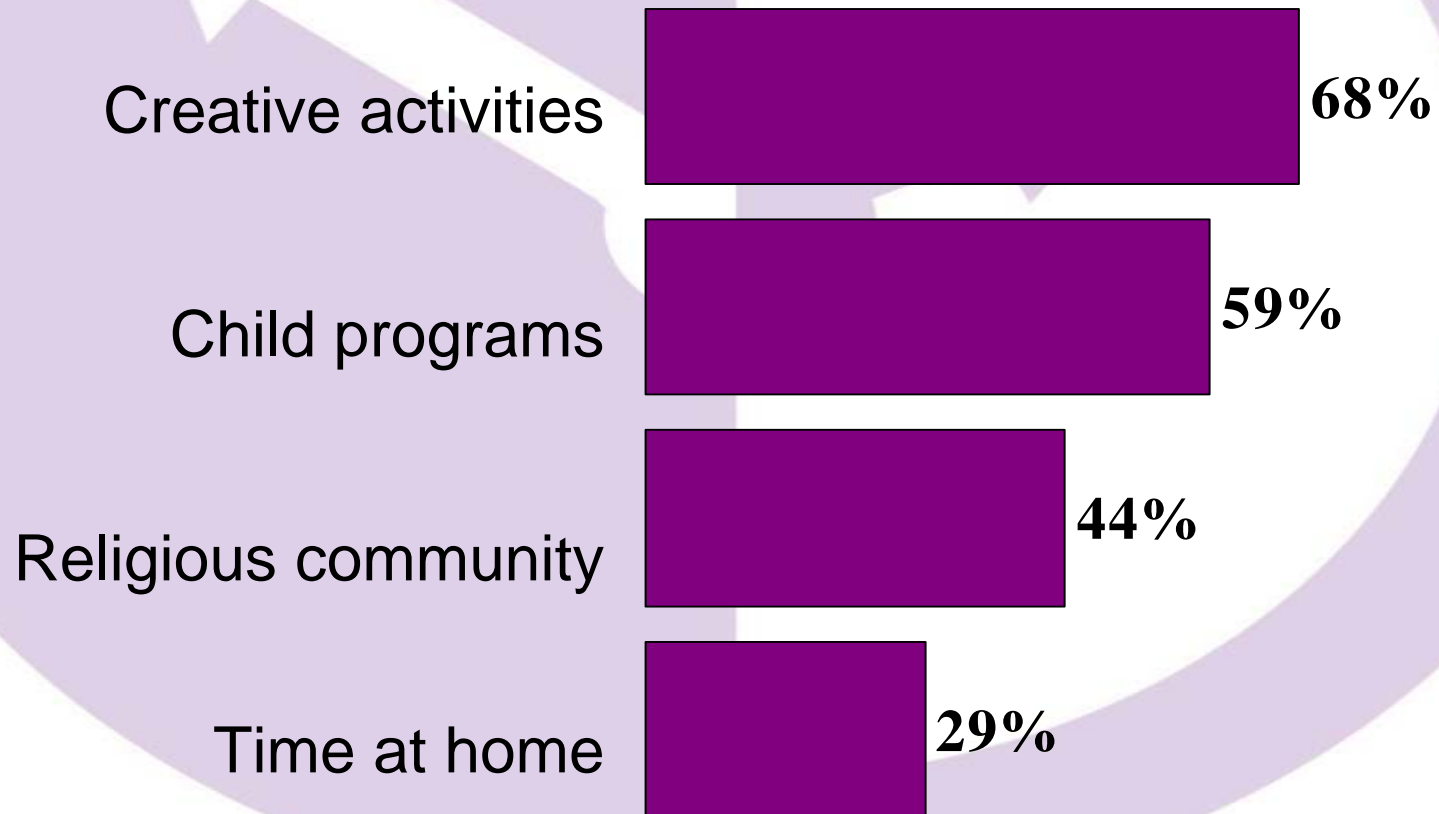
# The **Empowerment** Assets - Percentages Your Youth Report



# The Boundaries and Expectations Assets - Percentages Your Youth Report



# The Constructive Use of Time Assets - Percentages Your Youth Report

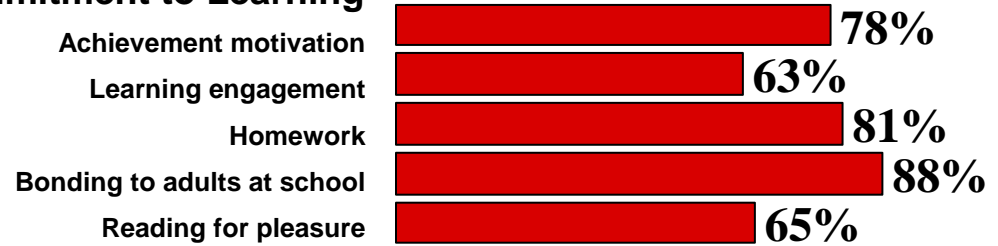


# Percent of Your Youth Reporting Each of 20 Internal Assets

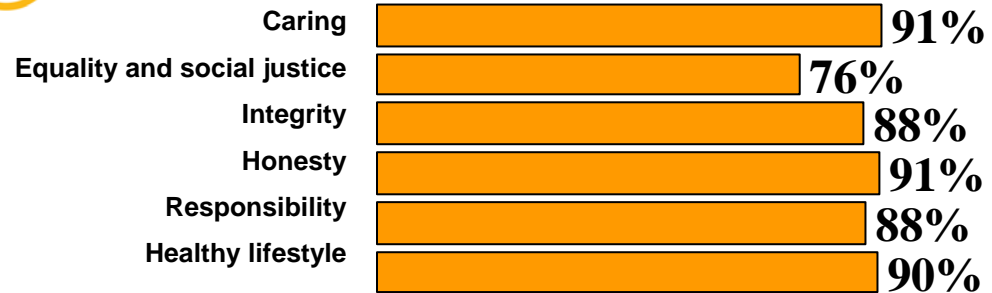
(Figure 6 from your Full Report)



## Commitment to Learning



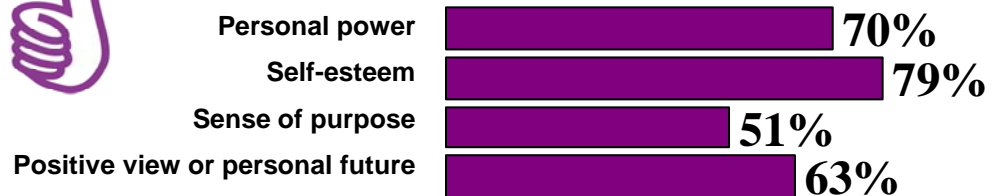
## Positive Values



## Social Competencies

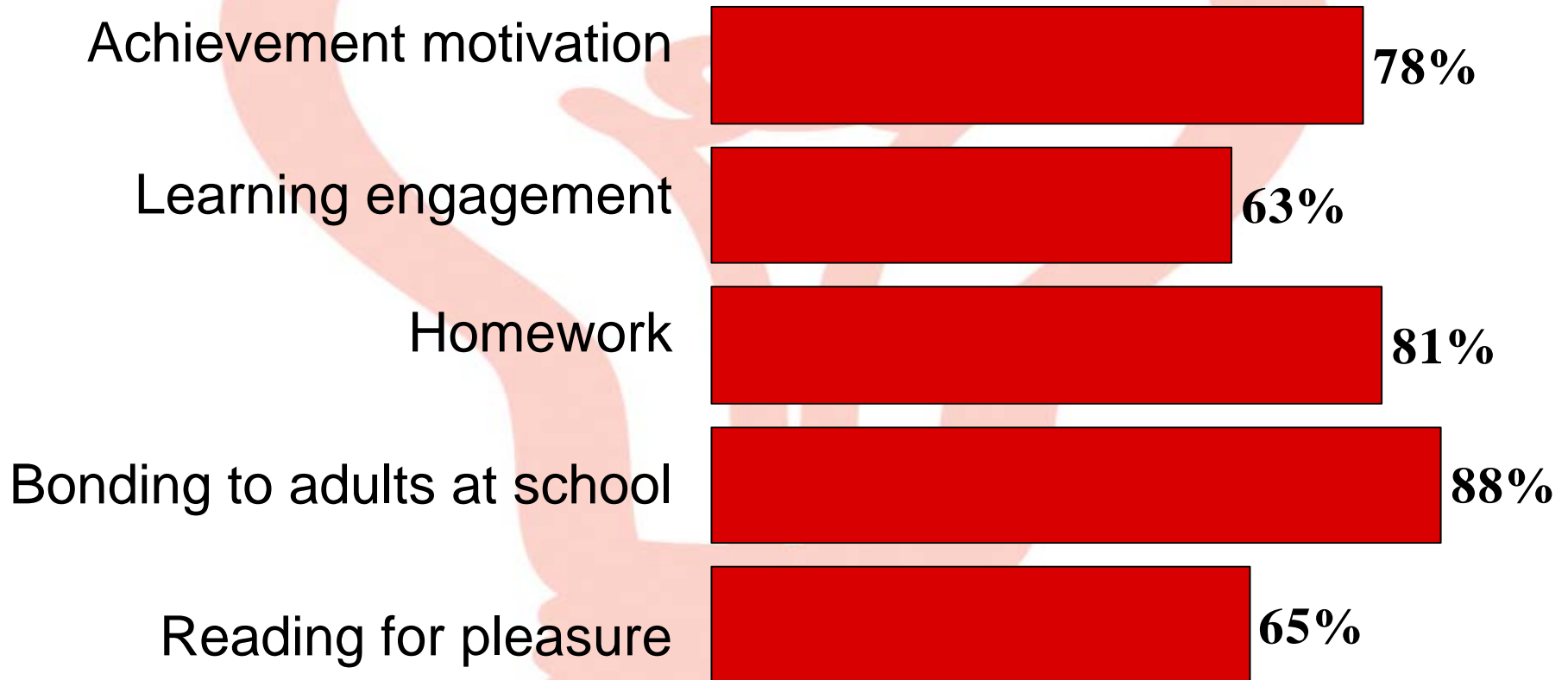


## Positive Identity

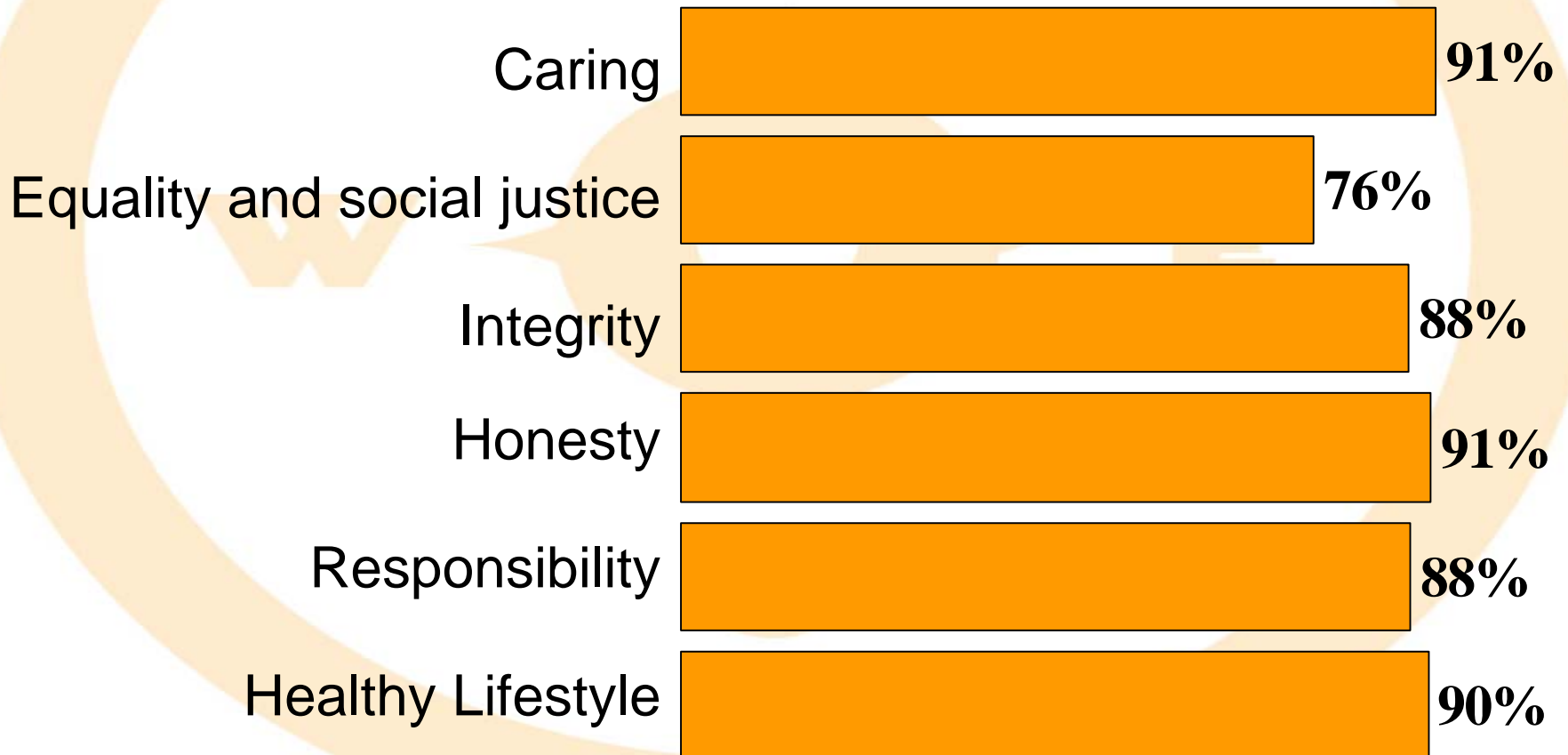


# The Commitment to Learning Assets -

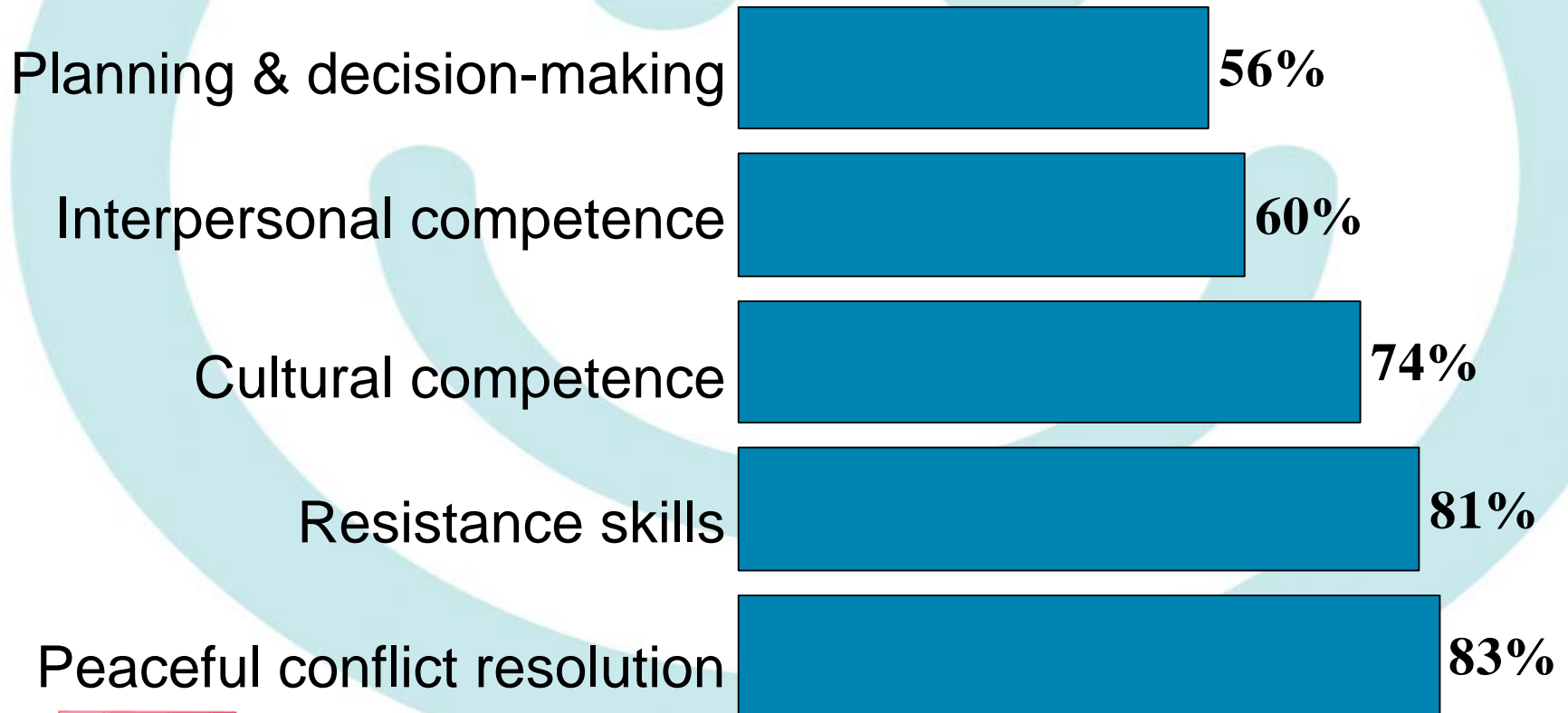
## Percentages Your Youth Report



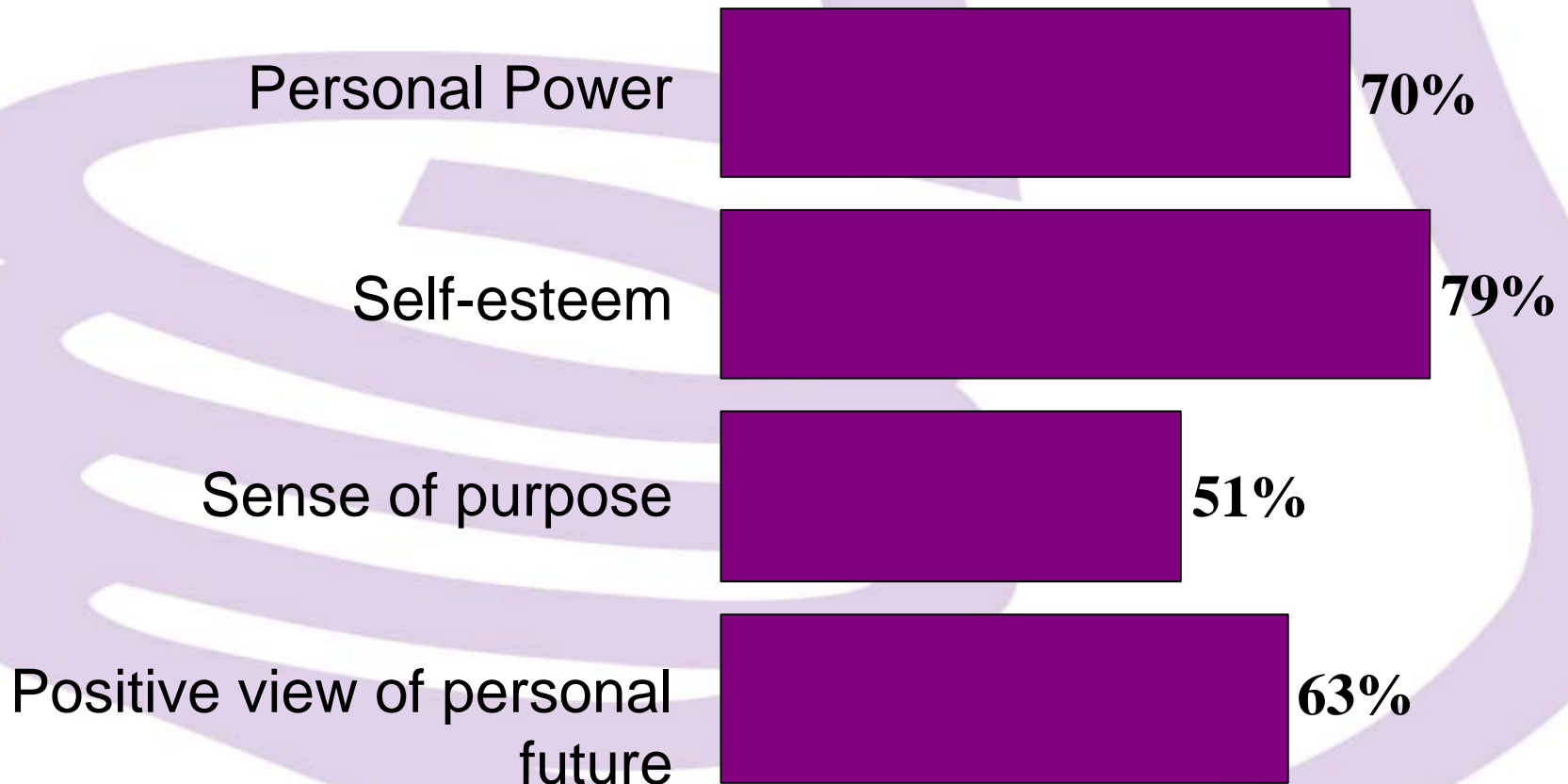
# The **Positive Values** Assets - Percentages Your Youth Report



# The Social Competencies Assets - Percentages Your Youth Report

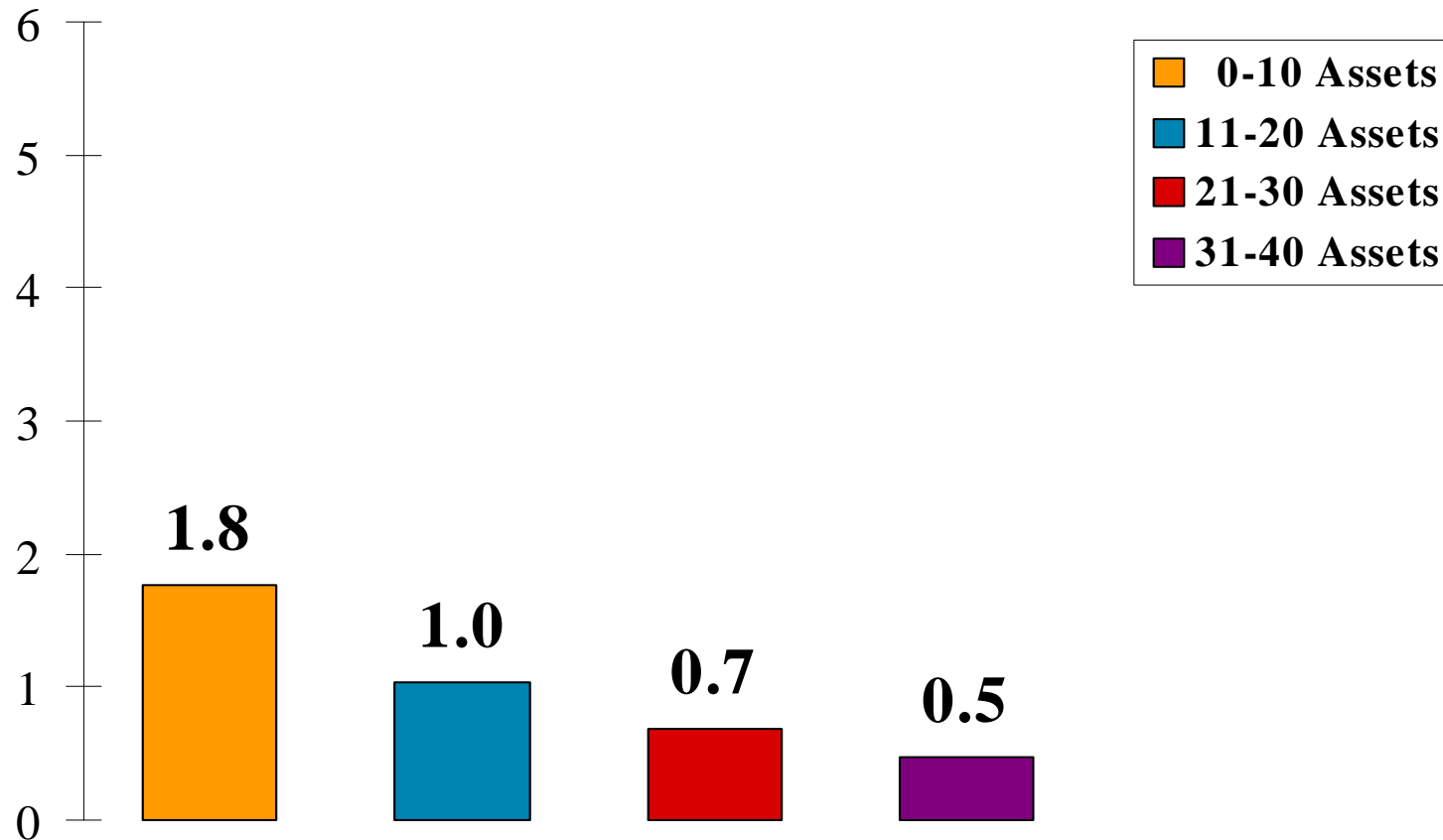


# The **Positive Identity** Assets - Percentages Your Youth Report



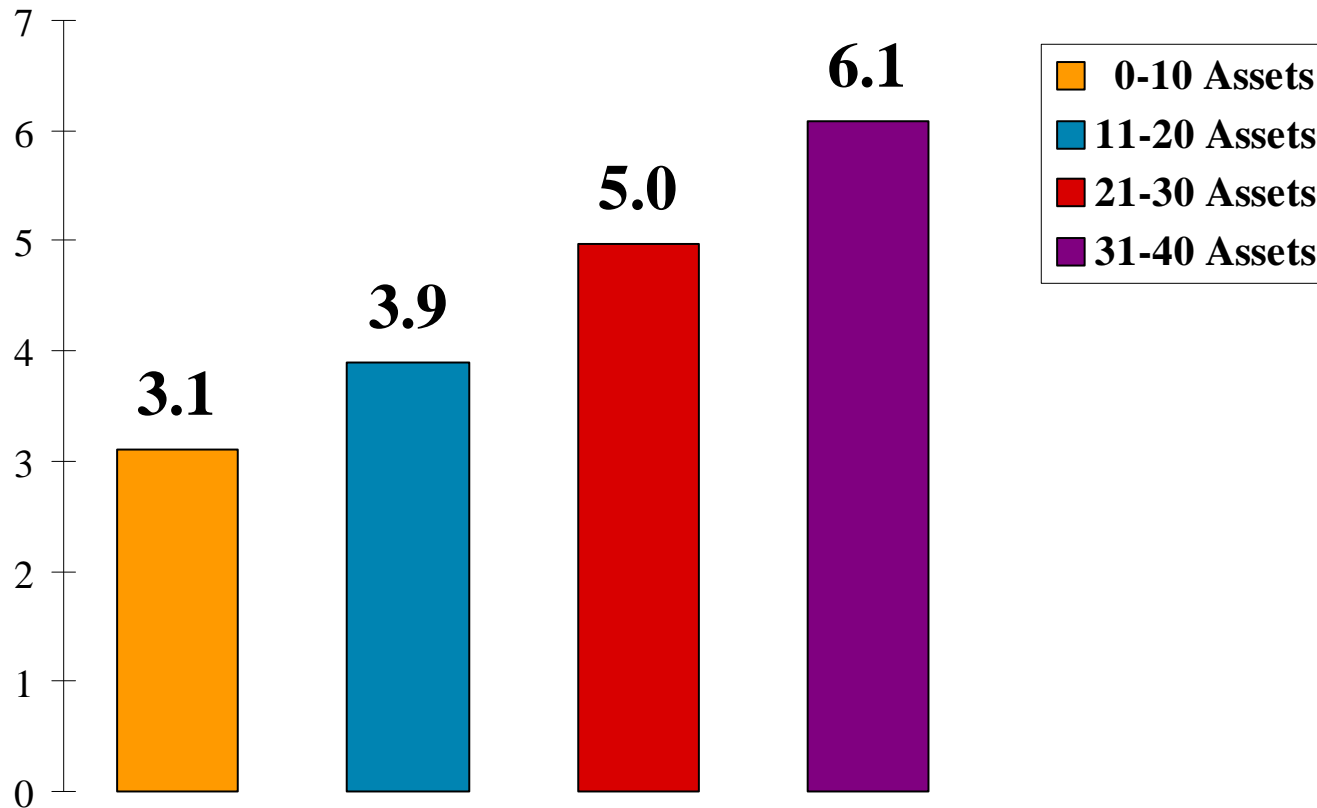
# The Average Number of Risk-Taking Behaviors

(Figure 11 from your Full Report)



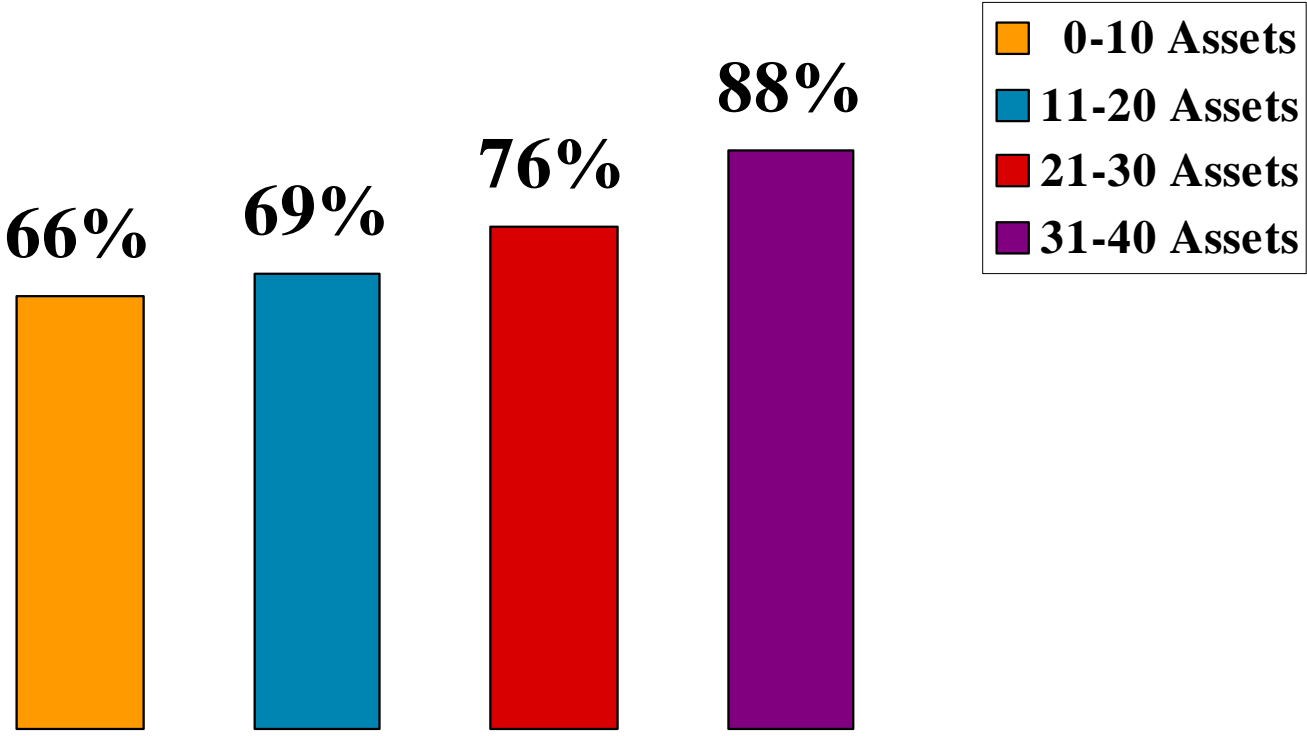
# The Average Number of Thriving Indicators

(Figure 13 from your Full Report)



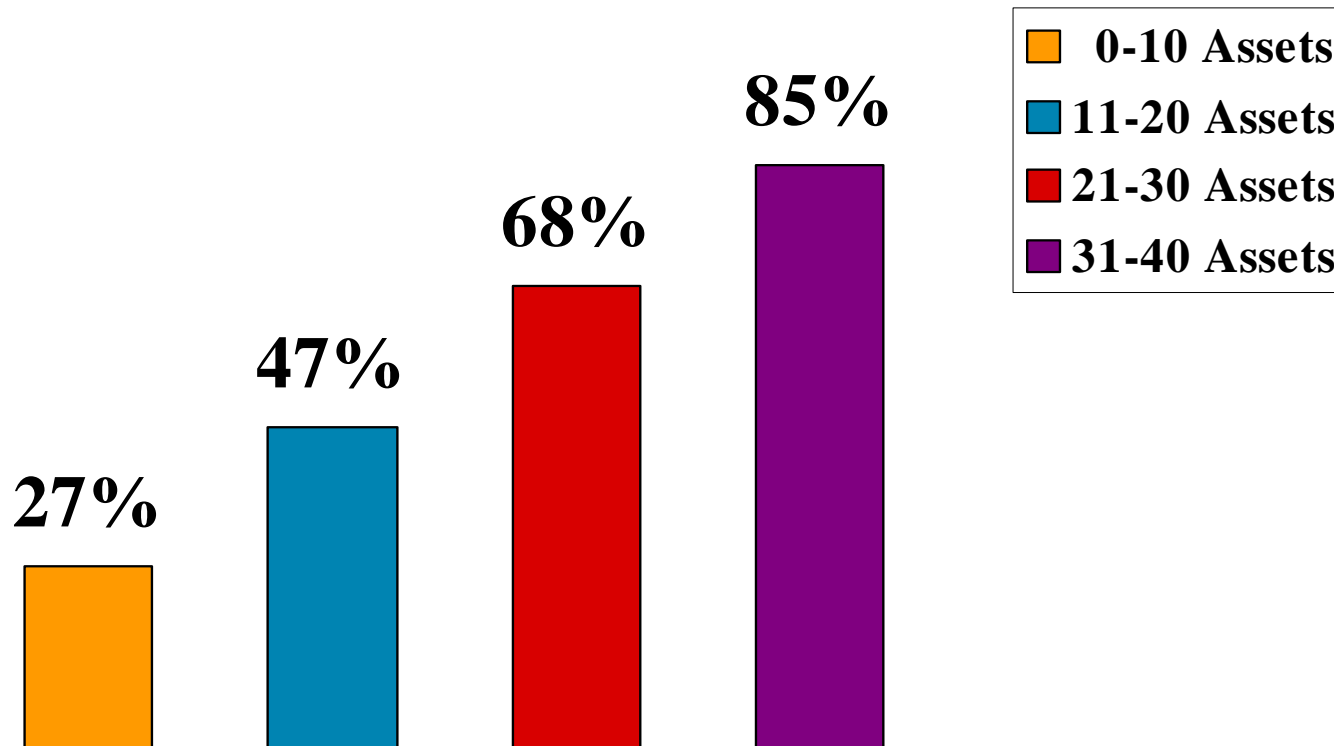
# The Power of Assets to Promote: School Success

(from Figure 14 of your Full Report)



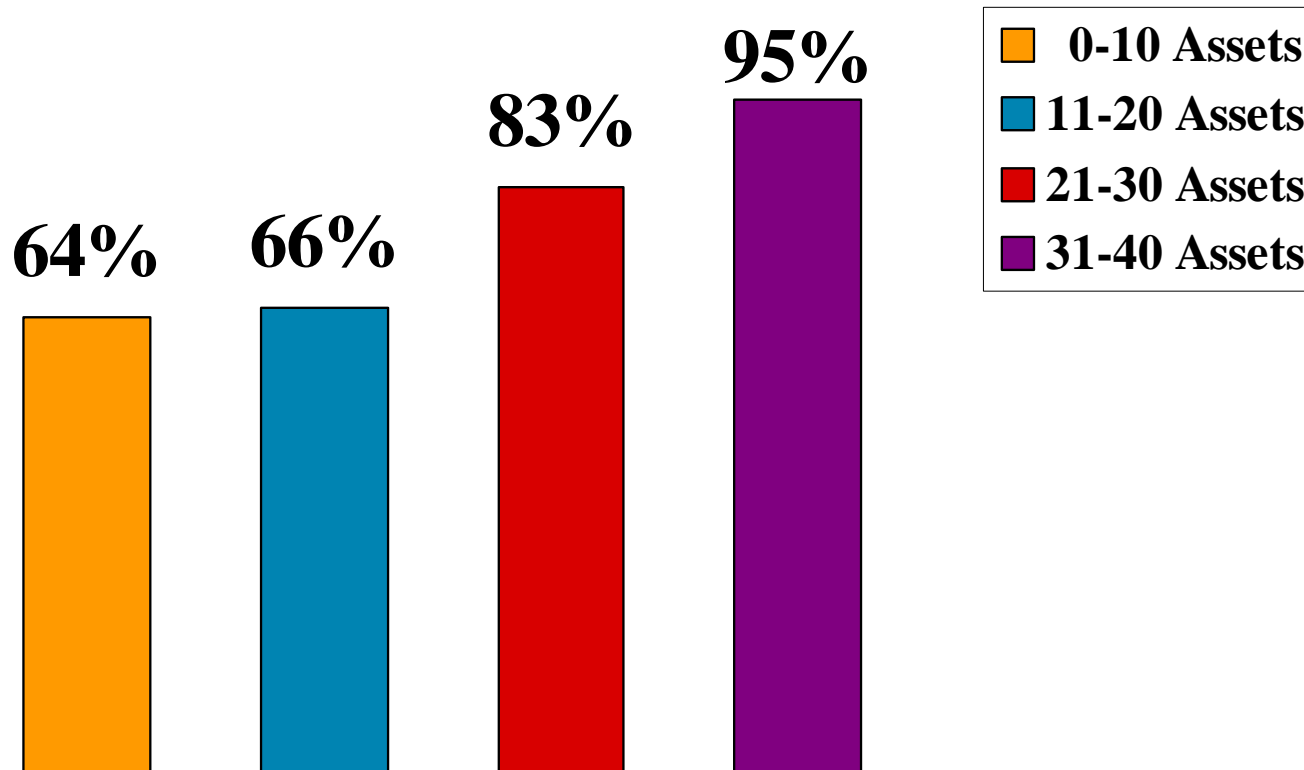
# The Power of Assets to Promote: Helps Others

(from Figure 14 of your Full Report)



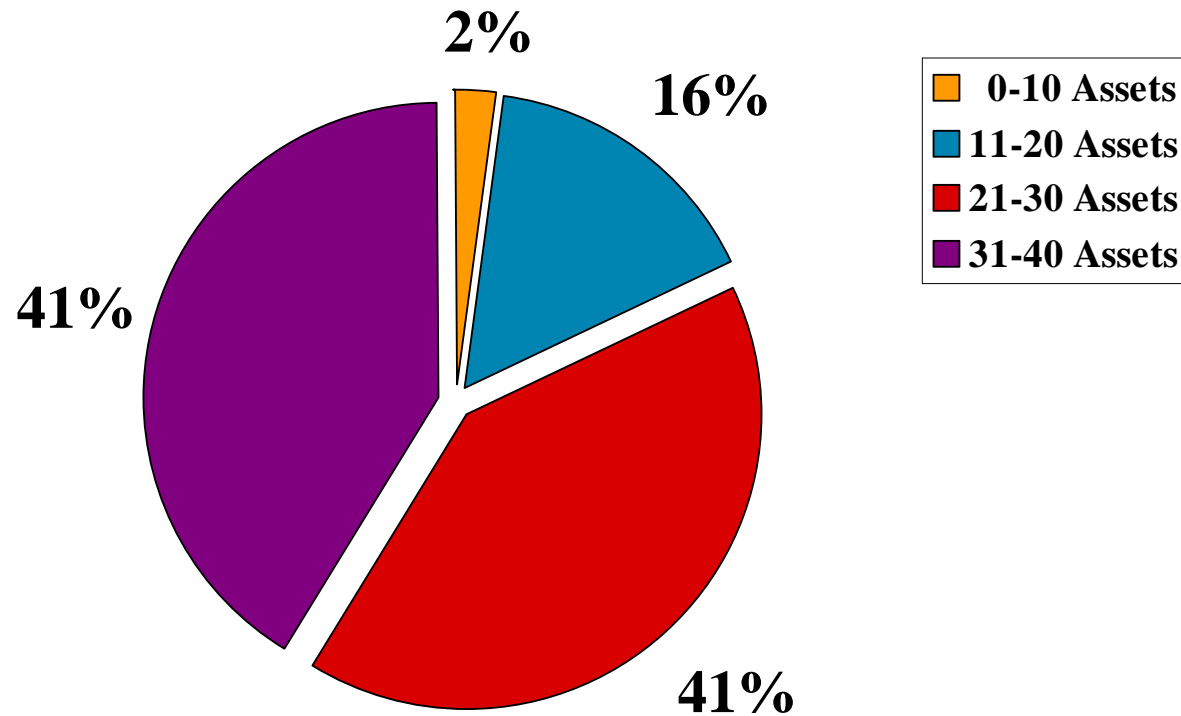
# The Power of Assets to Promote: Values Diversity

(from Figure 14 of your Full Report)



# The Challenge Facing Your Community

(Figure 15 from your Full Report)



# The Five Action Strategies

