

Proposed Business Plan/Budget

(October, 2006)



Planning and Engineering Division

Mandate:

Provision of high quality, cost effective fully integrated transportation, environmental, planning, engineering, development control, public works and utility services

Planning and Engineering Division

TOTAL FTE: 177.93



Planning and Engineering Division

Programs/Services:

- Planning and Development
- Engineering Services
- Transit
- Public Works and Utilities
- Office of the Environment

Planning and Engineering Division

Key Highlights & Accomplishments:

- Another big construction year in St. Albert
 - Reservoir, sewer trunk, roads
- Significant changes in Public Works
 - Organizational and service delivery
- Land Use Bylaw
 - Public participation policy
 - Infill guidelines
- Transit Long Term Department Plan approval
- Definitive plan established for Riel landfill
- Providing services in face of staffing challenges

Planning and Engineering Division

Service Standards:

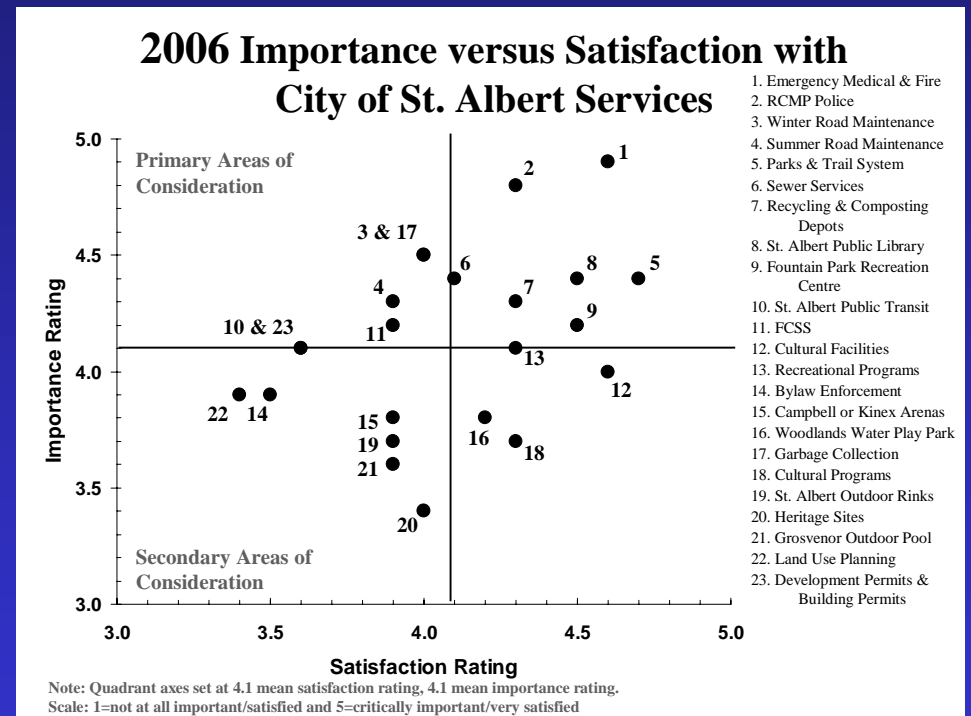
Many very public service expectations

- Utilities taken for granted
- Roads smooth and reliable
- Sidewalks safe and inclusive
- Transit reliable and on-time
- Transportation growth managed
- Parks and green spaces well maintained
- Environment considered in all that we do
- Timely and accurate processing for development
- Well planned community
- Capital projects managed effectively

Planning and Engineering Division

Citizens Satisfaction Survey

- A serious consideration of P&E Division in examining service changes and improvements

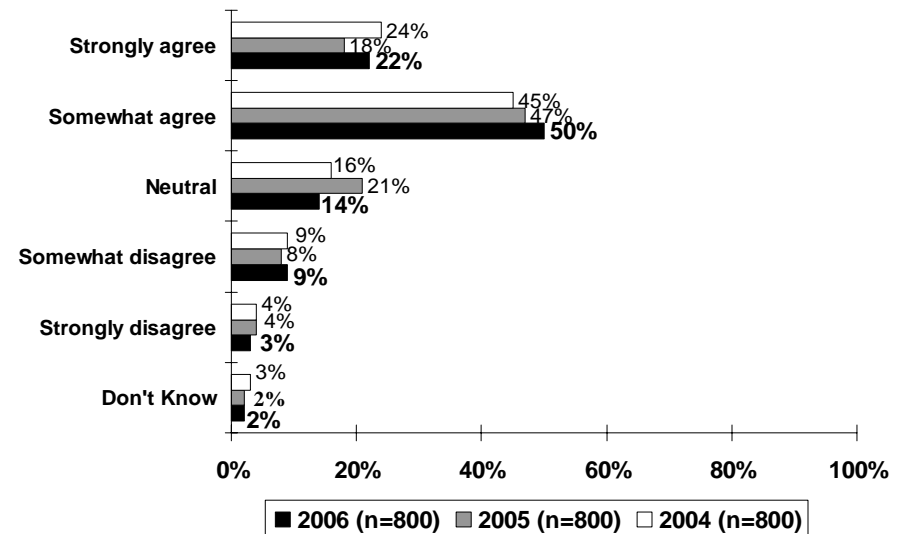


Planning and Engineering Division

Citizens Satisfaction Survey

- Environment advisory committee with citizen involvement

Level of Agreement that the City of St. Albert is Committed to Preserving the Environment

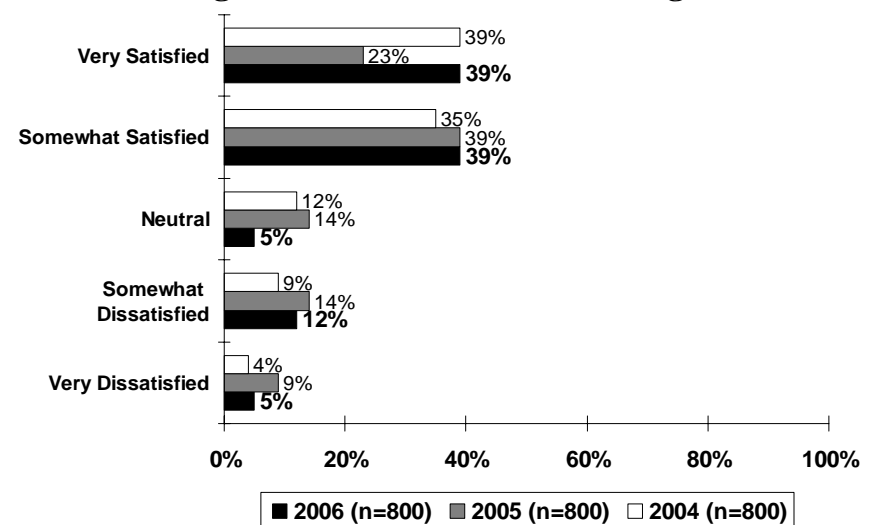


Planning and Engineering Division

Citizens Satisfaction Survey

- Winter road maintenance a service concern for citizens
- Changes to service delivery implemented
- New equipment to improve service
- Spring storm – sweeping early

**Satisfaction with Winter Road Maintenance
(including snow removal and ice management)**

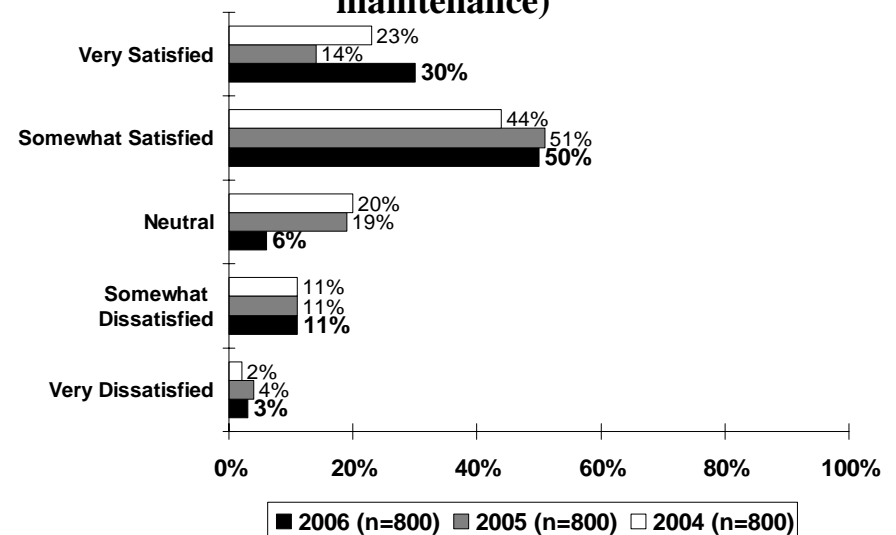


Planning and Engineering Division

Citizens Satisfaction Survey

- Summer road maintenance also a service concern for citizens
- Changes in methodology in all areas implemented
- New service improvement equipment used in Spring and Summer

Satisfaction with Summer Road Maintenance (including paving, pothole repair and sidewalk maintenance)

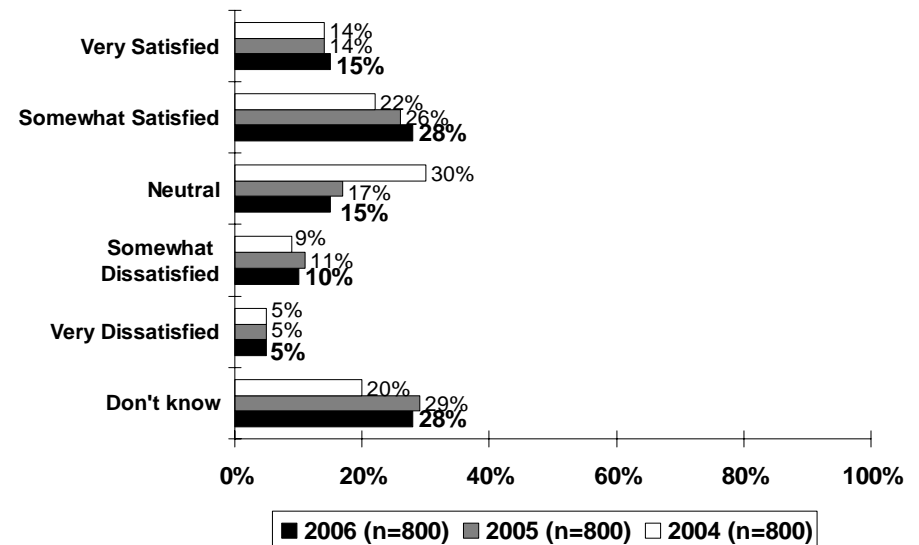


Planning and Engineering Division

Citizens Satisfaction Survey

- Transit - steady increase in satisfaction of those that have an opinion

Satisfaction with St. Albert Public Transit

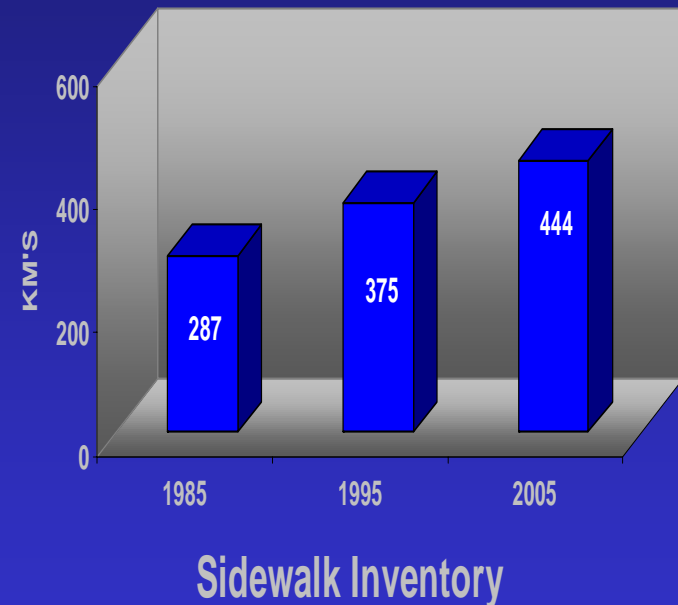


Planning and Engineering Division

Budget Pressures:

Growth versus Maintenance
Alberta Economy / Wealth

- Growing City
- Escalating Contract Costs
- Infrastructure Management
 - Capital Project Challenges
- Resources

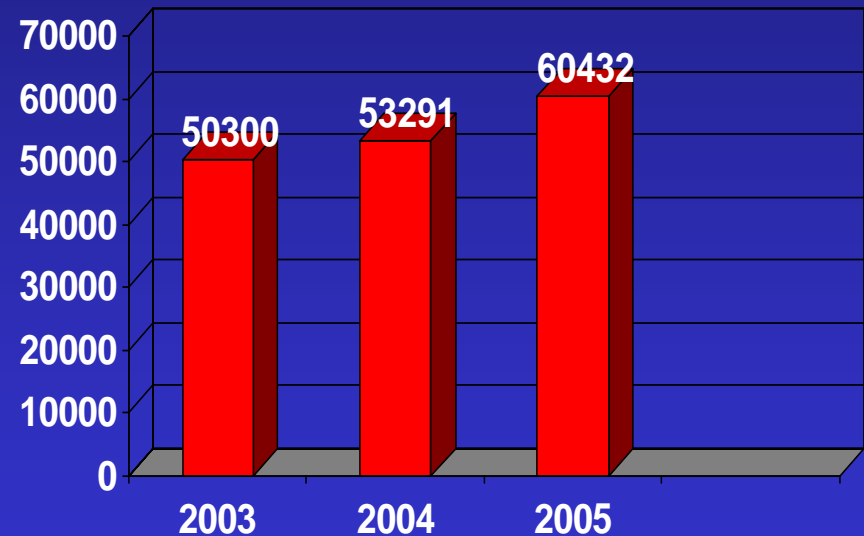


Planning and Engineering Division

Growing City

- Growth / service backlog
- Annexation
 - Planning
 - Service delivery
- Traffic Growth
- Transit Growth

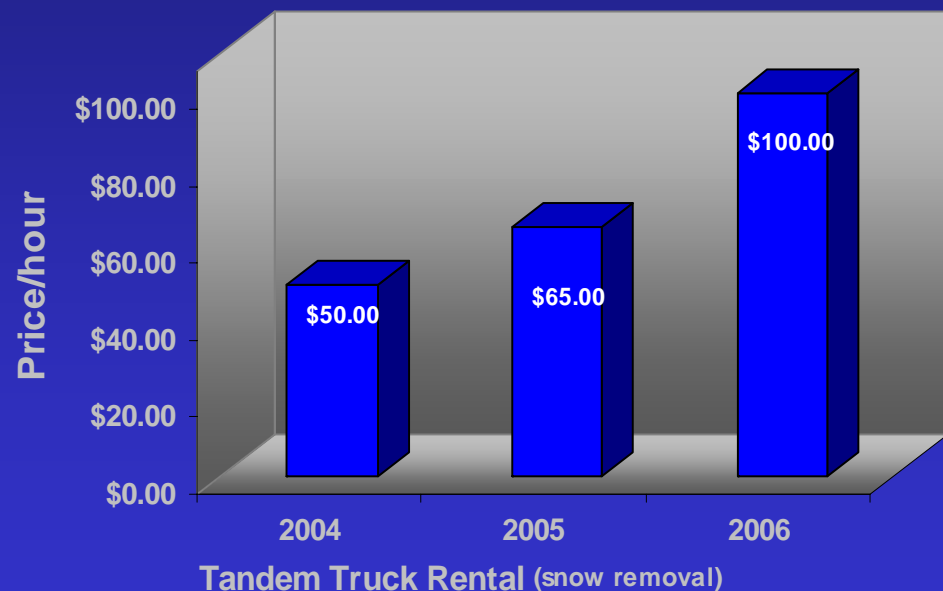
Traffic Volume on St. Albert Rd.



Planning and Engineering Division

Contracted Service Costs

- Cost escalations
- Availability
- Capacity
- Reduction of programs to manage budgets
- Repatriation of services?

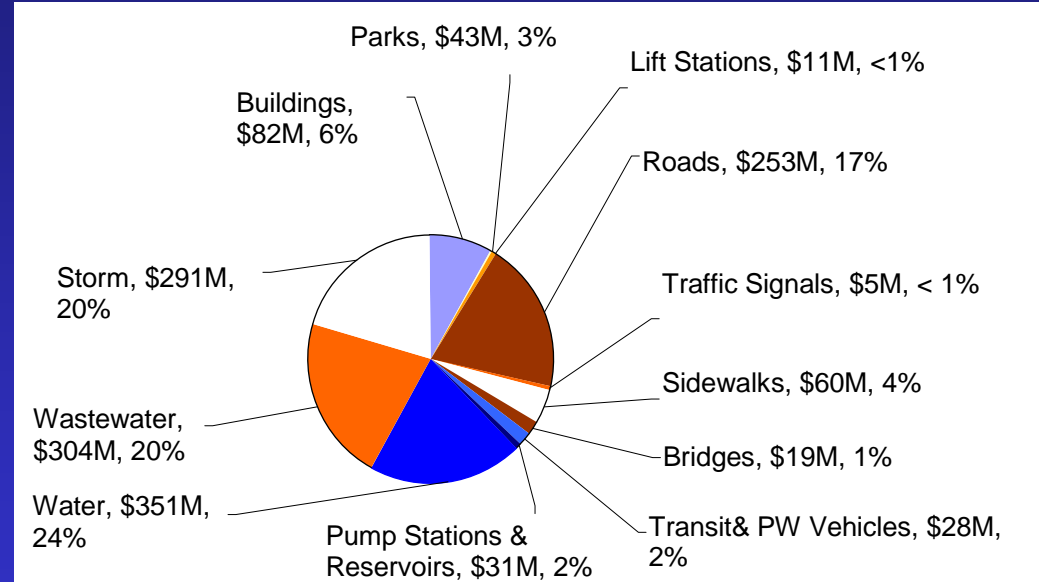


Planning and Engineering Division

Infrastructure Management

- Asset specific strategies
- Cost escalations
- Ongoing need for more information
- Capital project delivery challenges

\$1.48 B in Assets

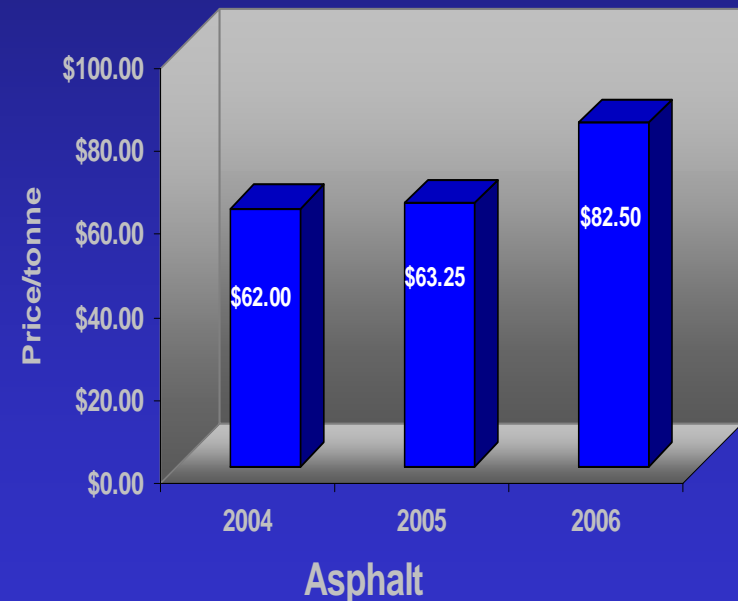


Infrastructure Value by Category
(2005 values)

Planning and Engineering Division

Resources

- Staffing turnover / sufficiency / Servus Place
- Provincial money = more work = more staff
- Significant cost escalations
- Some materials limited availability
- Limited consulting and contract availability and capacity



Planning and Engineering Division

Decision Factors to Meet Budget Target

- Risk management analysis ensuring infrastructure preservation and reliability
- Service level evaluations and rationalization
- Close examination of the balance between growth and maintenance

Results in the reduction of programs, delays to projects or changes to service levels

Planning and Engineering Division

Significant Change in Revenues: \$297,900 (3.5%)
(2008 \$312,600)

- Transit revenue increase due to ridership increase and inflation increase to selected fares
- Increase in Garage and Fleet charges recoveries
- Drop in rental revenue due to Campbell arenas incorporated into Servus Credit Union Place enterprise model

Planning and Engineering Division

Significant Change in Expenses: \$1,841,700 (7.8%)
(2008 \$1,573,200)

	2007	2008
• Personnel Costs Largest single component	\$1,020,800 (10.5%)	\$515,000
• Contracted Services Transit Contract, janitorial	\$591,000 (9.3%)	\$457,300
• Materials and Fuel – \$0.10 / litre = \$150,000	\$402,400 (8.1%)	\$340,600
• Garage and Fleet	\$229,300 (10.9 %)	\$186,800
• Transfers	(\$402,700) (81.8%)	\$73,500

Planning and Engineering Division

Operating and Capital Business Cases

Planning and Engineering Division

Operating Business Cases 2007 – 2008

- Managed growth
 - Staff
- Infrastructure management
 - Staff
- Some service improvements
 - Transit customer service
 - U-Pass
 - Affordable Housing
- Environment
 - Strategic plan and public awareness

Planning and Engineering Division

Operating Business Cases – 2007

11 Business cases for \$ 437,200

– 2.50 FTE to maintain service	\$ 148,200
– 3.00 FTE new programs	\$ 65,100
Technology Specialist - Division CCTV Program - Utilities	
– Transit Fare Revenue @ inflation	\$ (61,100)
– Implement U-Pass at \$90	\$ 120,000
– Land Development Advisor	\$ 50,000
– Eng. Seasonal Project Support	\$ 15,000
– Environmental Strategic Plan	\$ 25,000
– Environmental Mgmt. System	\$ 75,000

Planning and Engineering Division

'Late Addition' Operating Business Cases – 2007

Refurbish Three 1991 Buses	(U-Pass)	\$ 140,000
2008	\$ 60,000	
MDP Full Review		\$ 250,000

Planning and Engineering Division

Operating Business Cases – 2008

6 Business cases for \$ 454,300

- 4.00 FTE to maintain service \$ 233,400
- 2.00 FTE new programs
 - Customer Service Specialist - Transit \$ 42,900
 - IT Specialist – PW Utilities \$ 53,000
- Inter-municipal Plan with Sturgeon County \$ 125,000

Planning and Engineering Division

Operating Business Cases – 2009

18 Business cases for \$ 692,500

– 7.81 FTE to maintain service	\$ 347,400
– 2.00 FTE new programs	\$ 106,400
– Public Environment Program	\$ 30,000
– Transit Service Demands	\$ 20,000
– Implement Smart Driver	\$ 25,000
– Sturgeon River Water Monitoring	\$ 20,000
– Aerial Photography	\$ 35,000
– PW Administrative Support	\$ 13,700
– Statutory Holiday Support	\$ 20,000
– Environmental Management System	\$ 75,000

Planning and Engineering Division

2007 – 2008 Capital Business Cases: Growth versus Preservation

- ***Infrastructure Maintenance***
 - Roads, sidewalks, utilities, vehicle and equipment replacement
- ***Growth***
 - Roads, buses, utilities
- ***Environment***
 - Landfill mitigation, energy savings program, outfall program

Planning and Engineering Division

Capital Business Cases:

- 2007

– Former PW Yard Remediation	\$100,000
– PW City Building Fall Protection	\$ 93,000
– Fire Suppression Grain Elevators	\$200,000
– Giroux Road existing to WRR	\$7,500,000
– Heritage Buildings Assessment & Conservation Plan	\$ 75,000

Planning and Engineering Division

Capital Business Cases:

- 2007
 - Maintenance & preservation of Heritage
 - Buildings \$ 50,000
 - SAP Rehab \$500,000
 - South Riel Connector to WRR \$750,000
 - Transportation Systems Mgmt \$300,000
 - WRR – Stage 2 & 3 \$13,100,000

Planning and Engineering Division

Capital Business Cases:

- 2007
 - Transportation Master Plan \$ 400,000
 - Affordable Housing Projects \$ 150,000
 - Automated Vehicle Locators \$ 35,000
 - 1 Arterial Overlay Program \$ 720,000
 - Major Bridge Rehab Study \$ 100,000
 - Regulatory & Street Sign Upgrade \$ 25,000

Planning and Engineering Division

Capital Business Cases:

- 2007
 - Mobile Equipment Replacement \$ 2,111,000
 - Pedestrian Ramp Upgrade \$150,000
 - Neighborhood Sidewalk Program \$200,000
 - Pedestrian Bridge Rehab \$ 30,000
 - Energy Savings Program \$500,000
 - Transit Priority Pre-emption \$200,000

Planning and Engineering Division

Capital Business Cases:

- 2007
 - Local/Collector Overlay \$ 420,000
 - Transit Facility Expansion \$1,000,000
 - Transit Replacement Plan \$2,800,000
 - Scanner/Printer \$ 50,000
 - Expansion Buses (I HB) \$ 200,000

Planning and Engineering Division

Capital Business Cases:

- 2008
 - Construct Snow Storage Phase 2 \$ 650,000
 - Kinex/Akinsdale Arena Upgrades \$ 292,000
 - 2 Arterial Asphalt Overlays \$ 280,000
 - Collector Reconstruct \$1,000,000
 - Permanent Line Marking \$100,000

Planning and Engineering Division

Capital Business Cases:

- 2008
 - 2 Local/Collector Overlay \$ 480,000
 - Replace & Expand Fuel storage \$ 400,000
Split between Public Works & Transit \$200,000 each
 - Transit AVL & GPS \$ 100,000
 - Transit Identifier Labels \$ 25,000

Planning and Engineering Division

Capital Business Cases:

- 2009
 - Villeneuve Road Upgrading \$ 1,500,000
 - Local Rebuilds \$ 1,000,000
 - North Campbell –142st Upgrade \$ 1,200,000
 - Tandem Truck \$ 123,000
 - Trip Planning Software \$ 100,000
 - Bellerose Dr-Oakmont to Eldorado \$ 100,000

Planning and Engineering Division

Capital Business Cases:

- 2009
 - Transit Centre Park N Ride \$ 500,000
 - 184 St Rehabilitation \$ 200,000
 - Red Willow Trail Overlay \$ 95,000
 - Sidewalk Linkages Older Areas \$ 150,000

Planning and Engineering Division

Discussion

Planning & Development
2007 – 2009
Business Plan & Budget
Highlights

Planning & Development

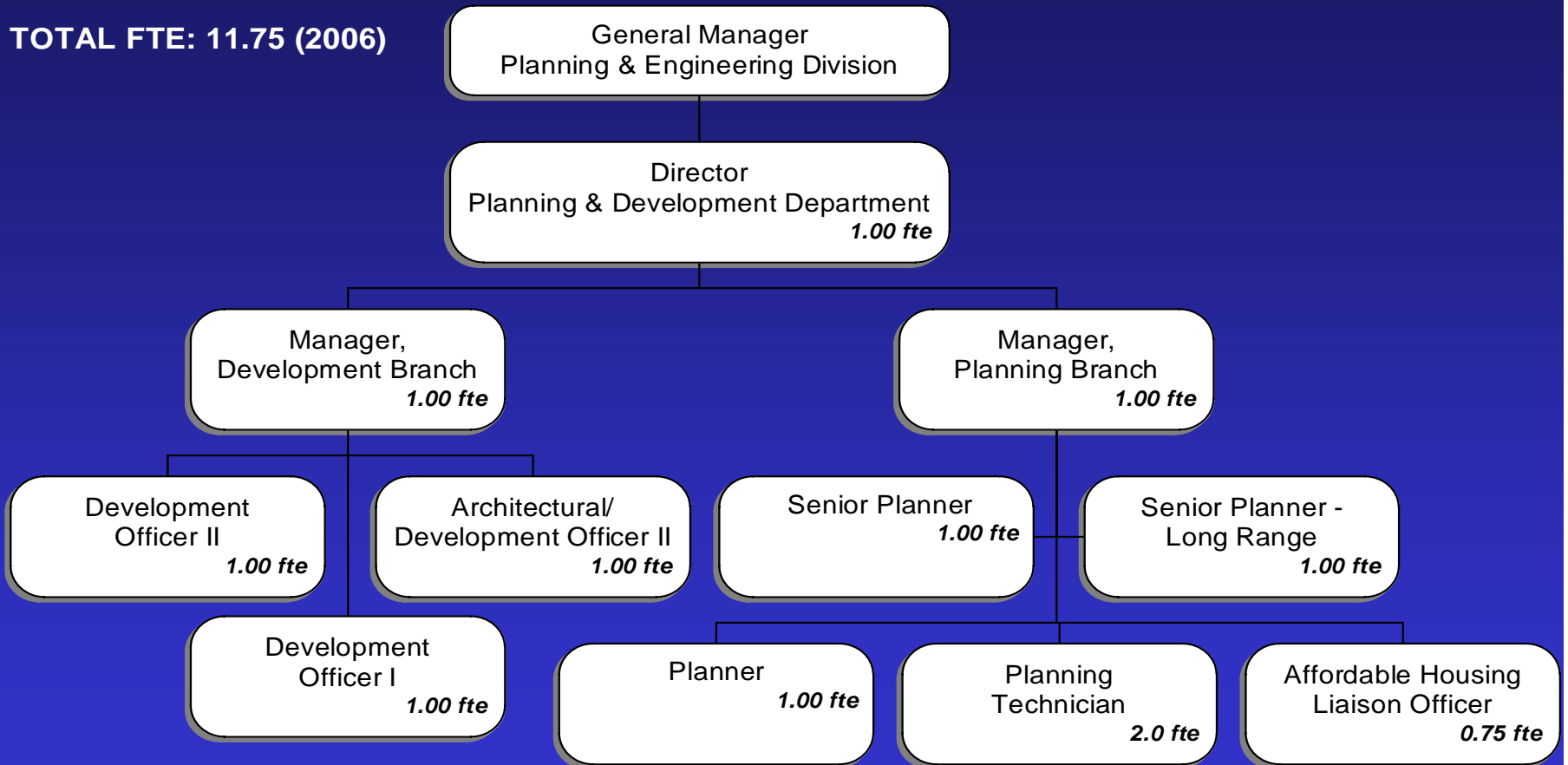
Mandate:

- Planning & Development Mandate:

“To integrate natural, physical and infrastructure amenities through effective land use planning to accommodate community needs in consultation with key stakeholders, developers, and residents to preserve and enhance the quality of life in St. Albert.”

Planning & Development

TOTAL FTE: 11.75 (2006)



Planning & Development

Programs/Services:

- Planning Branch
 - Current Land Use Planning (ASP's, rezonings)
 - Regional Land Use Planning (referrals)
 - Long Range Planning (affordable housing, policies to implement plans)
- Development Branch
 - Development Permits and Control/Enforcement
 - Compliance Certificates
 - Architectural Evaluation

Planning & Development

Key Highlights & Accomplishments:

- Municipal role in annexation completed
 - Hearing concluded in January; support role to MGB staff in 2006.
- Continued work on affordable housing
 - Strategy, housing trust, incentives, projects.

Service delivery

- Minimal impact on customer and corporate service delivery.

Planning & Development

Key Highlights & Accomplishments:

- Other major planning projects - 2006:
 - Design guidelines for established neighbourhoods (infill guidelines).
 - Corporate Public Consultation Policy.
 - Northwest Urban Village – ASP and Direct Control District.
 - Municipal Development Plan – Background research and draft reports.

Planning & Development

Service Standards:

- Development permit decisions issued within 40 days (MGA).
- Subdivision application decision in 60 days (MGA).
- Proponent of major residential or commercial project - timeline and task charts.

Planning & Development

Budget Pressures:

- Increased cost for contracted services.
- Enforcement carrying costs.
- Affordable housing, incentives, and projects.
- Land supply vs. Dept. revenues in 2007-09.

Planning & Development

Significant change in Revenues:

- None – Council Direction - Planning & Engineering fees - full cost recovery based on activity based accounting.
- No increase revenues for 2007 – 08.

Planning & Development

Revenues Overview:

<u>Revenue</u>	<u>2006 Budget</u>	<u>2007 Budget</u>	<u>2008 Budget</u>
Sales & User Fees	597,400	597,400	597,400
2005 Revenues \$582,026			
Total	<u>\$597,400</u>	<u>\$597,400</u>	<u>\$597,400</u>

Planning & Development

Significant change in Expense:

- Hold the line other than expected increases in:
 - Salaries and Benefits.
 - Mandatory Professional Association Memberships.

Planning & Development

Expenditures Overview:

<u>Expense</u>	<u>2006 Budget</u>	<u>2007 Budget</u>	<u>2008 Budget</u>
Salaries & Benefits	937,200	1,088,000	1,156,200
Contracted Services	199,800	86,800	86,800
Materials, Goods & Supplies	21,300	15,600	16,000
Total Expenses	<u>1,158,300</u>	<u>1,190,400</u>	<u>1,259,000</u>
Total Net Cost	560,900	593,000	661,600

Planning & Development

Operating and Capital Business Cases

Planning & Development

Operating Business Cases 2007 - late addition

Municipal Development Plan Review- Post Annexation

Managed Urban Growth and Form (MUGF)

- Separate meeting - flagged item?
- 2006 Budget – Council approved a “limited” review – carry through of existing CityPlan (MDP) vision and the IDP future land uses.
- \$50,000 budget - primarily for fiscal impact analysis of final plan option, only statutory public hearing.

Planning & Development

Operating Business Cases 2007 - late addition

Municipal Development Plan Review- Post Annexation

- 2006 – Council - examination of issues not in “limited” review.
- Some stakeholders (SAEDAC, UDI, etc.) have requested to re-examine vision of St. Albert post annexation.
- \$250,000 – Use of Land Use Planning Consultant [CityPlan (2000) - \$331,000].

Planning & Development

Operating Business Cases 2007 - late addition Municipal Development Plan Review- Post Annexation cont..

MDP Process – Full Review - 2006 to 2008:

- 2006/2007 – Background Reports:
 - 8 Background Reports
 - Each report: existing situation, emerging trends, recommendations.

Planning & Development

Operating Business Cases 2007 - late addition

Municipal Development Plan Review- Post Annexation cont..

- Background Reports – 2006/2007:
 - Residential Development
 - Commercial & Industrial Development
 - Impact of Upgraders
 - Current Trends
 - Parks, Open Space, Schools, Culture and Recreation
 - Community Sustainability
 - Human Services
 - Annexation Area – Constraints and Opportunities

Planning & Development

Municipal Development Plan Review

2007/2008 MDP Review Process

2007 – Consultation

- Research and Background reports prepared
- RFP - Planning Consultant
- Select MDP Consultant.
- Consultant undertakes public consultation process (Council approved)

2008 – Committee / Plan

- Steering committee work based on public consultation undertaken in 2007
- Preparation of draft MDP
- Feedback on draft MDP
- Adoption of MDP

Planning & Development

Operating Business Cases 2008- Funded

Administrative Officer (Division) 1.0 FTE \$38,400
Service and Operational Excellence (SOE)

- Additional staffing will:
 - Provide support to 2 Departments – Engineering Services & Planning and Development
 - Accept and initiate permit process; customer walk-in and phone enquiries
 - Business Friendly review – front counter service

Planning & Development

Operating Business Cases 2008

Administrative Officer (Division) Cont.....

- Presently - 2 FTE Administrative Officer positions for 29.75 FTE in 2 Departments (18 FTE's – Eng; 11.75 FTE's – P&D).
- Since 2003 re-organization of the Administrative Branch and elimination of 2 administrative positions - 10 FTE's have been added (7 in Eng. Dept. and 3 in P&D Dept.)

Planning & Development

Operating Business Cases 2008 & 2009 - Funded

- Intermunicipal Development Plan (IDP) Review w/ Sturgeon County [Managed Urban Growth & Form (MUGF)]

\$125,000 per year over two years - timing?

(50% of total \$500,000 cost)

- 34% of IDP area in annexation
- Governance approach and guiding principle changes?

Planning & Development

Operating Business Case - 2009

- Affordable Housing Liaison 0.25 FTE \$15,000
Service & Operational Excellence (SOE)
- Requested in 2006 Budget - monitor and advise whether position needs to be a 1.0 FTE rather than 0.75 FTE – unknown as position has just been filled.

Planning & Development

Capital Business Case- Funded 07/08

- Affordable Housing Project(s)
- Safety and Caring (SC)

\$ 150,000 2007

\$ 1,000,000 2008

Funding for:

- Establishing Housing Trust
- Incentives (development and other costs)
- Partial funding for projects – low & medium density

Planning & Development

Capital Business Case - Funded

- Affordable Housing Project(s) *Continued...*

Need:

- 2,100 units needed – *St Albert Affordable Housing Strategy*
- Additional 100 units per year as population grows

Planning & Development

Discussion

Engineering Services

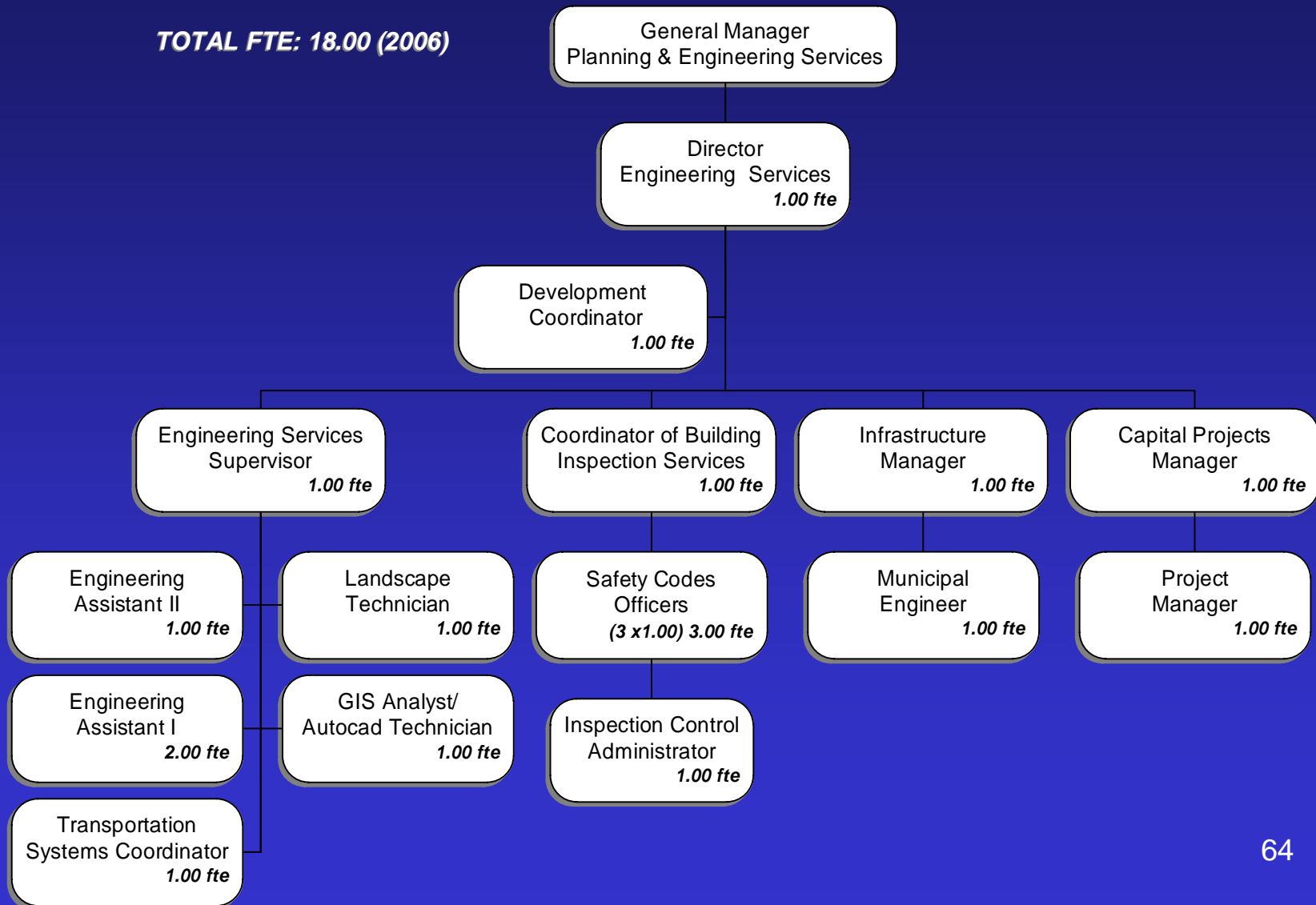
2007 – 2009
Business Plan & Budget
Highlights

Engineering Services

Mandate:

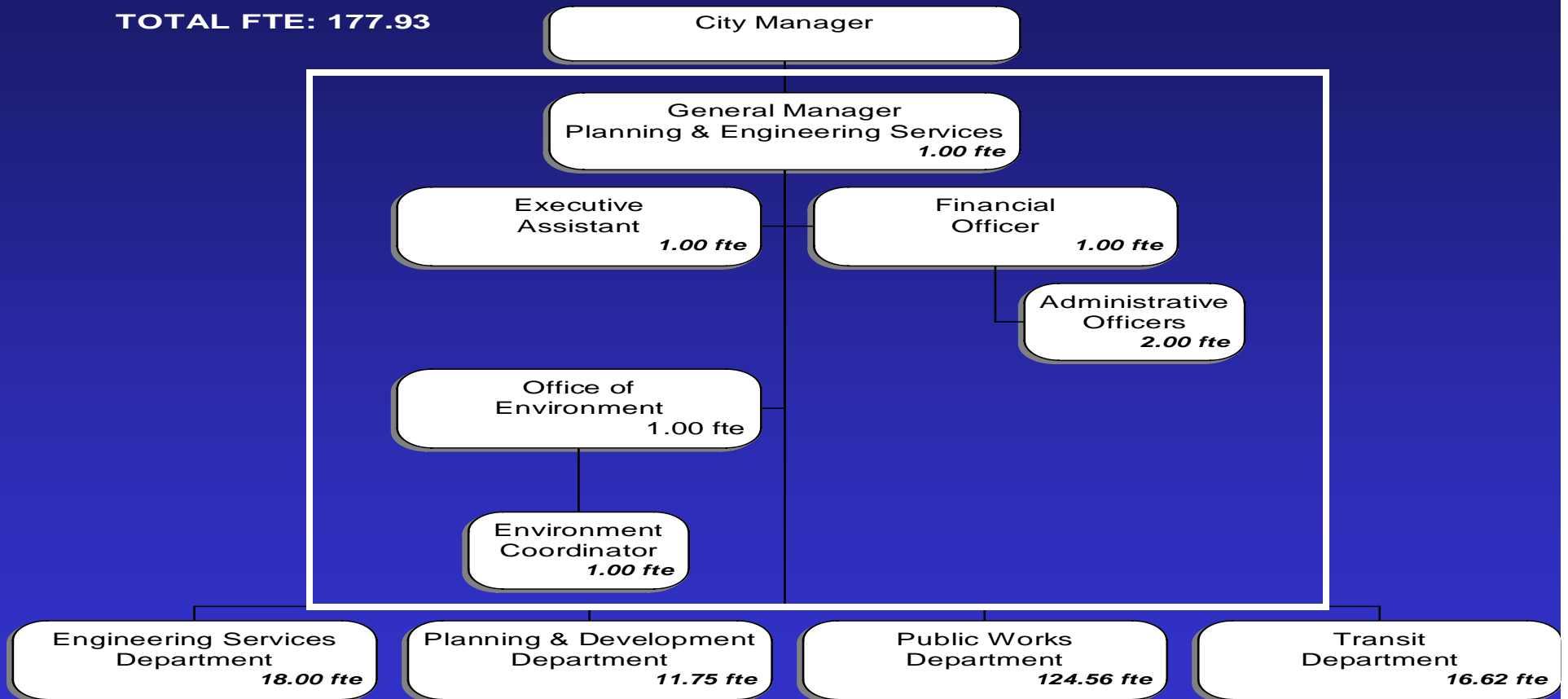
“To provide a high quality professional engineering services to ensure that our citizens have safe, adequate, effective and reliable infrastructure systems and services. These have to effectively balance cost and level of service. They are constructed to minimize the need for longer term maintenance and recognizing that any and all environmentally sensitive issues are addressed resulting in an environmentally safe community.”

Engineering Services



Planning and Engineering Division

TOTAL FTE: 177.93



Engineering Services

Programs/Services:

- Urban Development
 - Construction drawing reviews
 - Field inspections
 - Process Development Agreements
 - Area Structure Plan, Subdivision and Development project reviews

Engineering Services

Programs/Services:

- Traffic and Transportation Engineering
 - Transportation management
 - Management of the traffic signals operation and maintenance contract
 - Public safety associated with trails, sidewalks, ramps and bridges
 - Pavement Management System

Engineering Services

Programs/Services:

- Infrastructure Management
 - Development of master plans
 - Development of 10 year capital plans
 - Infrastructure review
 - Monitoring and Assessment
 - Infrastructure information management
 - Risk management
 - Infrastructure Strategy Development

Engineering Services

Programs/Services:

- Capital Projects Management
 - Planning & programming
 - Capital program.
 - Project initiation, planning, execution, monitoring and close-out
 - Performance management and reporting
 - Project information management

Engineering Services

Programs/Services:

- General Engineering Services
 - Respond to general stakeholder inquiries where possible within a 3 day timeframe
 - Process encroachment agreements within 2 weeks
 - Provide general engineering services to other internal departments and support to community groups

Engineering Services

Programs/Services:

- Inspection Services (Safety Codes)
 - Issuance of residential permits within 5 working days
 - Issuance of non residential permits within 14 working days
 - Provision of inspection services within 2 working day of request
 - Quality Management Plan
 - Provide lot grading inspections within 5 working days and issue certificates within 5 working days

Engineering Services

Programs/Services:

- Office of the Environment
 - Strategies and initiatives
 - Environmental Management Systems
 - Awareness, reporting and partnerships
 - Monitoring and assessment
 - Regulatory liaison

Engineering Services

Key Highlights & Accomplishments:

- West Regional Road
 - Stage one construction - 70% complete
- Riel Landfill Remediation
 - Address environmental issues
- Land Development
 - Manageable pace of development

Engineering Services

Key Highlights & Accomplishments:

- Transportation
 - St Albert Road Signage
 - Traffic signals LED conversion
- Safety Codes
 - Significant volumes for existing staff complement
 - Organizational changes required

Engineering Services

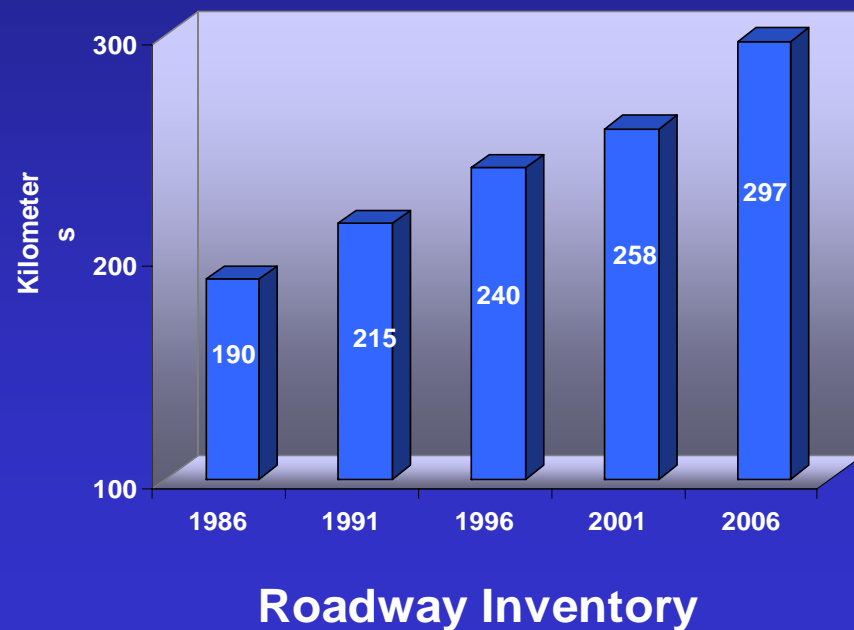
Service Standards:

- Timelines for services are tracked on the POSSE
- Feedback from customers and stakeholders
- Regulatory approval agencies
- Infrastructure Strategy Study

Engineering Services

Budget Pressures:

- Growth in inventory/service demand
- Contracted services costs rising
- Industry capacity
- Scheduling
- Staffing
- Risk management



Engineering Services

Revenues Overview:

<u>Revenue Item</u>	<u>2006 Budget</u>	<u>2007 Budget</u>	<u>2008 Budget</u>
Sales & User Fees	83,500	83,500	83,500
Licenses & Permits	835,300	835,300	835,300
Total Revenue	918,800	918,800	918,800

Engineering Services

Significant change in Expense:

Salaries & Benefits	\$214,000 (12%) 2007
	\$111,600 (5.5%) 2008

- Reflects change in pay grid as a result of the salary survey, merit increases for eligible staff and a 3.5% economic adjustment (2007 & 2008) and annualization of new 2006 positions

Contracted & General Services	\$59,200 (9.2%) 2007
	\$12,000 (1.7%) 2008

- Pavement Management System transferred in from Capital (2007)

Engineering Services

Significant change in Expense:

Materials, Goods, Supplies & Utilities

\$70,800 (6.4%) 2007

\$ 2,500 (0.2%) 2008

- Increase in Street Lighting account (2007)

Engineering Services

Expenditures Overview:

<u>Expense Item</u>	<u>2006 Budget</u>	<u>2007 Budget</u>	<u>2008 Budget</u>
Salaries & Benefits	1,802,400	2,017,200	2,128,800
Contracted & General Services	642,400	701,600	713,600
Materials, Goods Supplies & Utilities	1,097,200	1,168,000	1,170,500
Bank Charges	18,000	18,000	18,000
<u>Other Expenses</u>	<u>22,500</u>	<u>20,000</u>	<u>21,700</u>
Total Expense	3,582,500	3,924,800	4,052,600 ⁸⁰

Engineering Services

Operating and Capital Business Cases

Engineering Services

Operating Business Cases 2007 – Funded

Environmental Strategic Plan
(SSE) \$ 25,000

- *Long term plan*
- *Based on environmental policy and mission*

Seasonal Project Support
(EIM) \$ 15,000

- *Short term staff complement to meet peak construction demands*
- *Future staff attraction*

Engineering Services

Operating Business Cases 2008- Funded

Safety Codes Officer (SOE)	1.0 FTE	\$75,200
-------------------------------	---------	----------

- *Expand the branch to maintain service levels*
- *Potential addition of electrical inspection services*

Capital Project Coordinator (SOE)	1.0 FTE	\$66,700
--------------------------------------	---------	----------

- *Project management demand*

Engineering Services

Operating Business Cases 2008- Funded

AutoCad Technician
(EIM)

1.0 FTE

\$53,100

- *Computer Aided Design (CAD) function is required*
- *Existing staff dedicated to division level GIS*

Engineering Services

Operating Business Cases 2009

Public Enviro Awareness Program (SSE)		\$ 30,000
Landscape Technician (SOE)	1.0 FTE	\$ 48,000
Sturgeon River Water Quality Monitoring (SSE)		\$ 20,000
Environmental Mgmt. System- Municipal (SSE)		\$ 75,000
Engineering Assistant II Urban (SOE)	1.0 FTE	\$ 61,400
Aerial Photography (EIM)		\$ 35,000

Engineering Services

Capital Business Cases 2007- Funded

- Fire Suppression Grain Elevators \$200,000
(EIM)
 - *fire protection for historic building*

- Giroux Road - Existing to WRR \$ 7,500,000
(MUGF)
 - Arterial road connection to the WRR

Engineering Services

Capital Business Cases 2007- Funded

- Heritage Buildings Assessment & Conservation Management Plan \$ 75,000
(EIM)
 - Five heritage buildings
 - Conservation management plan

- Maintenance & Preservation of Heritage Buildings
(EIM)

\$ 50,000	2007
\$ 60,000	2008

 - Preservation of 7 buildings

Engineering Services

Capital Business Cases 2007- Funded

- 1 Arterial Overlay Program
(EIM)

	\$ 720,000	2007
	\$ 960,000	2008

 - Basic program for overlays
 - Maintain the Pavement Quality Index
- Major Bridge Rehabilitation
(EIM)

	\$100,000	2007
	\$ 1,000,000	2008

 - Study performed in 2005/6
 - Final Eng. Design in 2007
 - Peron St in 2008 St Albert Road in 2009

Engineering Services

Capital Business Cases 2007- Funded

- Pedestrian Ramp Upgrade
(SOE)

\$ 150,000	2007
\$ 150,000	2008

 - *Safe and barrier free access*

- Neighborhood Sidewalk Replacement
(EIM)

\$ 200,000	2007
\$ 250,000	2008

 - *Focused on older neighborhoods*
 - *Pedestrian access*

Engineering Services

Capital Business Cases 2007- Funded

- Pedestrian Bridge Rehab \$ 30,000
(EIM)
 - Engineering Study
 - Condition assessment

- 1 Local / Collector Overlay Program
(EIM)

	\$ 420,000	2007
	\$ 480,000	2008

 - Basic program for overlays
 - Maintain the Pavement Quality Index

Engineering Services

Capital Business Cases 2007- Funded

- Scanner / Plotter \$ 50,000
(SOE)
 - *Digital equipment to improve service to industry*
 - *Reproduction of large format (blue print size) materials*
 - *Inventory and records management*

Engineering Services

Capital Business Cases 2007- Unfunded

- Red Willow Trail Overlay
(EIM) \$ 90,000
- Sidewalk Linkages Older Areas
(SOE) \$ 150,000
- Collector Reconstruct
(EIM) \$1,000,000
- AHF Asbestos Removal
(EIM) \$ 30,000

Engineering Services

Capital Business Cases 2008- Funded

- Construct Snow Storage Phase 2 \$ 650,000
(SSE)
 - *St Albert does not have a permanent site*
 - *Land , servicing and construction*

- 2 Arterial Roadway Asphalt Overlay \$ 280,000
(EIM)
 - *Represents a second level of reinvestment*
 - *Address PQI and backlog*

Engineering Services

Capital Business Cases 2008- Funded

- Collector Reconstruct \$1,000,000
(EIM)
 - Condition beyond rehabilitation
 - Structural failures

- Permanent Line Markings \$ 100,000
(EIM)
 - Under taken every two years
 - Longer lasting thermoplastic

Engineering Services

Capital Business Cases 2008- Funded

- 2 Local / Collector Overlay Program (add) \$ 480,000
(EIM)
 - *Represents a second level of reinvestment*
 - *Address PQI and backlog*

Engineering Services

Capital Business Cases 2008- Unfunded

- Sidewalk Linkages Older Areas
(SOE) \$150,000
- Red Willow Trail Overlay
(EIM) \$ 95,000

Engineering Services

Capital Business Cases 2009

- Villeneuve Road Upgrading
(MUGF) \$ 1,500,000
- Local Rebuilds
(EIM) \$ 1,000,000
- North Campbell Park 142 St Upgrade
(MUGF) \$ 1,200,000
- Bellerose Drive – Oakmont to Eldorado
(MUGF) \$ 100,000
- 184 Street Rehabilitation
(EIM) \$ 200,000
- Red Willow Trail Overlay
(EIM) \$ 95,000
- Sidewalk Linkages Older Area
(SOE) \$ 150,000

Engineering Services

Discussion

St. Albert Transit

2007 - 2009 Business Plan & Budget Highlights

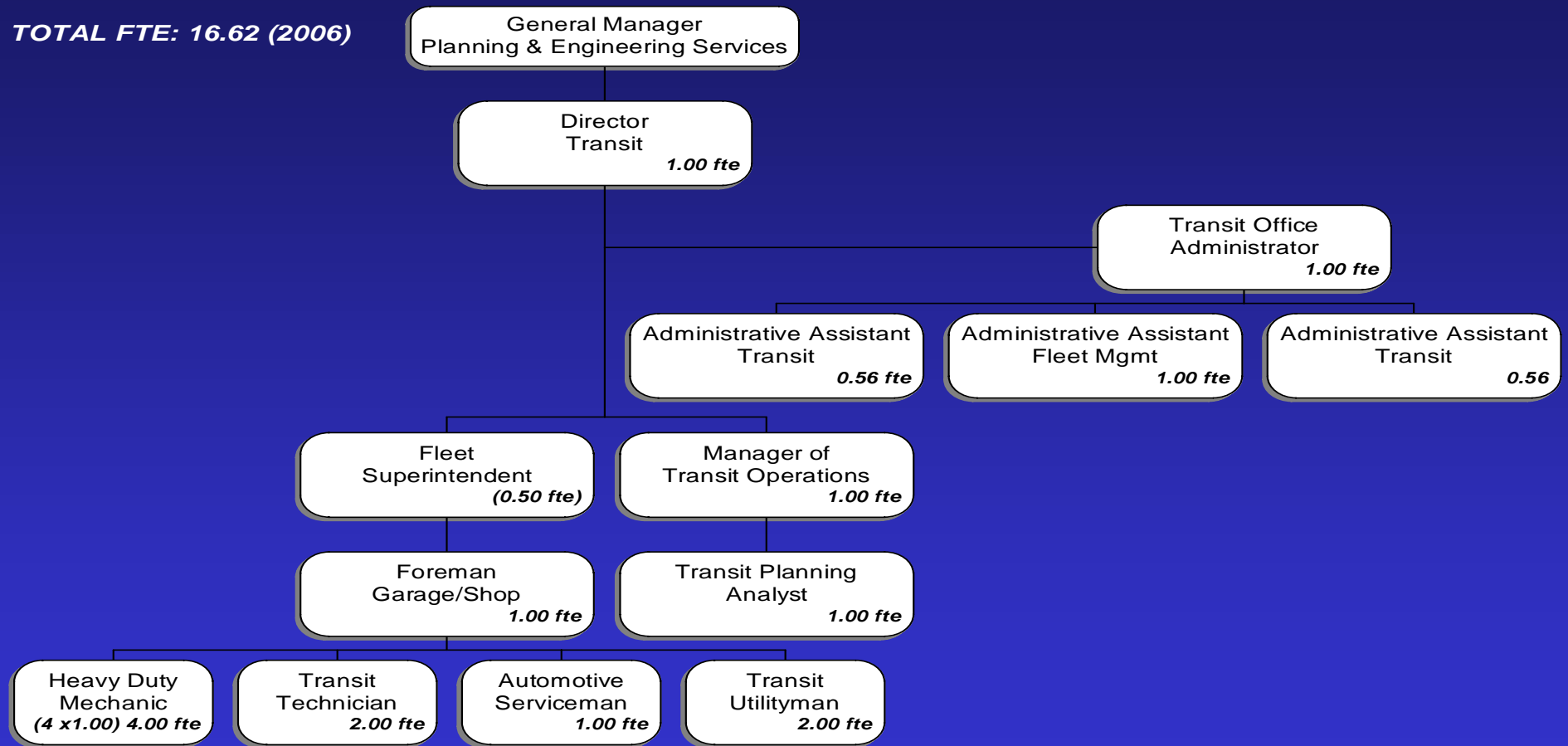
St. Albert Transit

Mandate:

“ To provide mobility for the citizens of St. Albert to travel within St. Albert and into Edmonton through the delivery of safe, reliable, equitable, convenient, and cost-effective Public Transit and Handibus services that are designed to meet the needs of the customers.”

St. Albert Transit

TOTAL FTE: 16.62 (2006)



St. Albert Transit

Programs and Services

- Local connecting fixed routes & Dial-a-bus in St. Albert
- Commuter routes to key destinations in Edmonton
- Special, Contracted and Charter Bus Services
- Handibus service

St. Albert Transit

Highlights and Accomplishments 2006

- Long Term Department Plan adopted
- New service in North Erin Ridge, South Oakmont and Kingswood.
- New Saturday service to U of A
- ISO 14001 registration maintained
- Supported special events - Children's Festival, Rainmaker Rodeo, Grand Prix of Edmonton.

St. Albert Transit

Highlights and Accomplishments 2006

6% increase in ridership

St. Albert Transit

Core Service Standards:

- Weekday Service to arrive Downtown Edmonton 06:30 / depart 00:15
- Saturday Service 07:45 to 00:15
- Sunday Service 11:15 to 18:15
- Minimum frequency of 30 minutes in weekday peak hours and 60 minutes at all other times
- 400 metres to 90% of all residences
- Minimum 10 rides per service hour required for higher levels of service

St. Albert Transit - Performance

	2004	2005	2006E	2007B	2008B
Commuter Ridership	917K	931K	986K	1,004K	1,024K
Rides Per Capita	16.5	16.5	17.0	17.0	17.0
Service Hours per Capita	1.36	1.38	1.39	1.39	1.39
Total Revenue / Direct Cost Ratio (Excl. Handibus)	49.1	42.7	41.8	40.6	38.4

St. Albert Transit

2007 & 2008 Budget Pressures:

- Cost of Fuel
- Parts cost escalation
- Operational Contract rate escalation
- Customer demands for improved and enhanced services
- Peak hour buses operating at capacity
- Traffic congestion increasing round trip time (cost & customer dissatisfaction)

St. Albert Transit – Administration

Aspect	1986	2006	% Change
Agresso Purchase System	No	Yes	100
Tempest	No	Yes	100
Fleet Management System	No	Yes	100
Website and e-mail	No	Yes	100
ISO 14001 Program	No	Yes	100
Safety Programs	No	Yes	100
Payroll	No	Yes	100
Staff	4	6	50

St. Albert Transit – Bus Maintenance

Aspect	1986	2006	Change	%
Kilometres	952k	2,029k	1,077k	113
Hours	42k	82k	40k	97
Buses	26	45	19	73
Staff	8	11	3	38

St. Albert Transit

Revenues Overview:

<u>Revenue Item</u>	<u>2006 Budget</u>	<u>2007 Budget</u>	<u>2008 Budget</u>
Sales & User Fee	2,413,500	2,615,200	2,666,800
Rentals	17,000	17,000	17,000
Unconditional Grants	440,600	440,600	440,600
Conditional Grants	75,000	75,000	75,000
Total	<u>\$2,946,100</u>	<u>\$3,147,800</u>	<u>\$3,199,400</u>

St. Albert Transit – Fare Revenue

	2006	2007	2008	%
Cash	354,600	379,400	387,000	9.1
Passes	1,371,000	1,571,000	1,603,200	16.9
Tickets	512,200	484,400	492,800	(3.8)
TOTAL	2,237,800	2,434,800	2,483,000	11.0

St. Albert Transit

Significant Change in Expenses:

- Administration Cost Centre

Personnel Costs

\$445,500 + \$56,100 (13%) + \$26,000(5%)

Grid, Reclassification and COLA

St. Albert Transit

Significant Change in Expenses:

- Operations Cost Centre

Transit Operating Contract

\$2,705,900 + \$288,400(11%) + \$263,400(9%)

Fixed rate and estimate + full year hours

St. Albert Transit

Significant Change in Expenses:

Bus Maintenance Cost Centre

Fuel

\$824,900 + \$202,700 (24%) + \$132,600 (13%)

Budget Cost per litre	2006 – 75 cents
	2007 – 90 cents
	2008 – 100 cents

Parts

\$354,600 + \$79,700 (22%) + \$24,500 (6%)

Increase above inflation, specialized parts

St. Albert Transit

Expenditures Overview:

<u>Expense Item</u>	<u>2006 Budget</u>	<u>2007 Budget</u>	<u>2008 Budget</u>
Salaries, Wages & Ben.	1,154,600	1,242,800	1,301,500
Contracted & Gen. Serv.	3,338,800	3,655,900	3,941,900
Materials, Goods, Supp. & Utilities	1,411,300	1,691,200	1,850,700
Other Expenditures	<u>33,100</u>	<u>26,900</u>	<u>29,100</u>
Total	<u>\$5,937,800</u>	<u>\$6,616,800</u>	<u>\$7,123,200</u>

St. Albert Transit

2007 Operating Business Cases – Funded

- Increase Fares at Inflation
(FRL) \$ (61,000)
- Implement U-Pass @ \$ 90
(SOE) \$ 120,000
- Fleet & Asset Manager (already on staff) 0.5 FTE
(SOE) \$ 55,100

St. Albert Transit

2007 Operating Business Cases - Funded

- Operations Support and Data Analyst 1FTE
(SOE) \$ 50,100

- Apprentice Heavy Duty Mechanic 1FTE
(SOE) \$ 43,000

St. Albert Transit

2007 Operating Business Cases - late addition

- Refurbish Retired Articulated Buses to be able to Implement U-Pass (ANNUAL ONGOING EXPENSE 60,000)

\$ 140,000

St. Albert Transit

2008 Operating Business Cases - Funded

Customer Service Specialist 1FTE (SOE)	\$ 42,900
---	-----------

St. Albert Transit

2008 Operating Business Cases: - Unfunded

Study for Transit RC ratio – 50% (FRL)	\$175,000
---	-----------

St. Albert Transit

2009 Operating Business Case

• Transit Scheduling Assistant (SOE)	1 FTE	\$ 45,000
• Transit Service Demands (MUGF)		\$ 20,000
• Heavy Duty Mechanic (SOE)	1 FTE	\$ 54,000
• Transit Utilityman (SOE)	1 FTE	\$ 38,000
• Implement Smart Driver Program (SSE)		\$ 25,000
• Statutory Holiday Service (SOE)		\$ 20,000
• Transit Office Assistant (SOE)	0.56 FTE	\$ 15,000
• Serviceman (SOE)	1 FTE	\$ 50,000

St. Albert Transit

2007 Capital Business Cases – Funded

- Transit Signal Priority and Pre-emption
 - \$ 200,000 2007
 - \$ 200,000 2008
- Transit Garage & Office Expansion Phase II
 - \$ 1,000,000
- Transit Fleet Replacement – 7 Buses
(Funded by Replacement Reserve & Basic Capital)
 - \$ 2,800,000 2007
 - \$ 1,200,000 2008
- Expansion Buses
 - 1 Handi-Bus \$ 200,000 2007
 - 2 – 18 meter articulated buses \$ 1,320,000 2008

St. Albert Transit

2007 Capital Business Cases – Unfunded

- Upass Growth Buses (3@ 675,000) \$2,025,000
- Expansion Buses (2 – 12 meter) \$ 800,000
- Bike Racks \$ 45,000

St. Albert Transit

2008 Capital Business Cases - Funded

- AVL & GPS on Buses \$100,000
- Identifier Transit Zone Labels and Information \$25,000
- Replace and Expand Fuel Storage \$ 200,000
(\$400K split between Public Works and Transit)

St. Albert Transit

2008 Capital Business Cases – Unfunded

- Fleet Management Inventory Control \$ 200,000

St. Albert Transit

2009 Capital Business Cases

- Transit Trip Planning Software \$ 100,000
- North Transit Centre & Park 'n' Ride \$ 500,000

St. Albert Transit

Fare proposals for 2007 and 2008

St. Albert Transit

- St. Albert Transit's Long Term Department Plan adopted by Council in January 2006 is based on a Council approved Fare Strategy and Service Standards.
- The purpose of the Fare Strategy provides Council with principles and considerations to guide setting of transit fares
- Historically, transit fares have increased roughly at inflation (CPI). Annually, council establishes transit fares for the up-coming year (or now two).

St. Albert Transit

10 FARE STRATEGY PRINCIPLES :

Overarching Principle – It is the policy of the City of St. Albert to promote and encourage the use of St. Albert Transit

- 1. All Persons shall pay a fare reflective of the product offered
- 2. Concession to regular fares will be consistent and have a clear rationale and justification
- 3. Total Transit revenues should recover in the range of 40% to 60% of direct operating costs

St. Albert Transit

- 4. The cost to ride acknowledges the cost of providing
- 5. The cost to ride shall reflect the general rate change in the all-items Consumer Price Index
- 6. Committed riders shall be rewarded with a lower cost per ride
- 7. A ride within St. Albert should be similar to other small municipalities in Alberta
- 8. The cost for a ride to / from Edmonton should reflect the longer distance (and cost)

St. Albert Transit

- 8A. Cash fare to / from Edmonton should be in the order of at least twice the St. Albert local or ETS fare
- 8B. Monthly adult pass for travel to / from Edmonton in the order 50% higher than a local pass and / or in the order of 25% higher than ETS
- 9. There is a negative elasticity to fare increases
- 10. Council establishes fares annually considering and balancing all the adopted principles

St. Albert Transit

Fare Increase Business Case

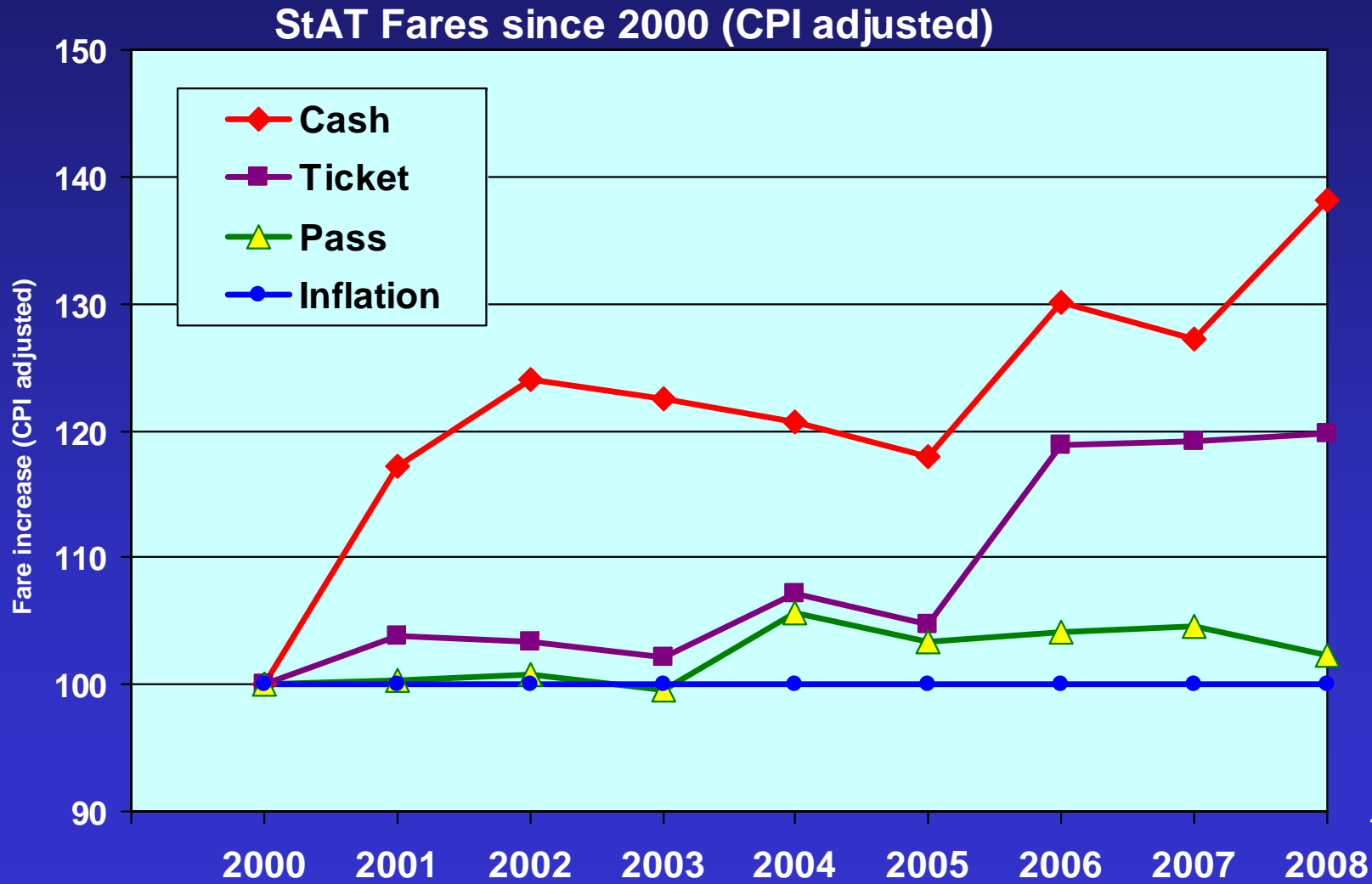
Fare Type	Current	2007 Proposed	2008 Proposed
Local Cash Fare (within St. Albert):			
Adult (12 - 64 years)	2.25	2.25	2.50
Concession (5 - 11 years and 65+)	1.75	1.75	2.00
Infant (0 - 4 years)	-	-	-
Commuter Cash Fare (to/from Edmonton):			
Adult (12 - 64 years)			
Peak Hours (0530 – 0830, 1500 – 1800 weekdays)	4.50	4.50	5.00
Off Peak Hours (all other times)	3.50	3.50	4.00
Concession (5 - 11 years and 65+)	2.50	2.50	3.00
Infant (0 - 4 years)	-	-	-
Tickets:			
Local (with St. Albert)	21.00 for 15	21.00 for 15	22.00 for 15
Commuter (to/from Edmonton)	37.00 for 15	38.00 for 15	39.00 for 15
Passes:			
Monthly Local (within St. Albert)	48.00	48.00	50.00
Monthly Commuter (to/from Edmonton)	72.00	74.00	74.00
Monthly High School Pass (Grades 10 - 12)	61.00	63.00	63.00
Trimester Student Pack Pass (4 month pass for Post Secondary education students)	244.00	252.00	252.00
Monthly Seniors Pass (65 years & over)	25.00	30.00	35.00
Handibus Fares:			
Local Cash	4.00 or 1 ticket	4.00 or 1 ticket	5.00 or 1 ticket
To/From Edmonton, Cash	8.00 or 2 tickets	8.00 or 2 tickets	10.00 or 2 tickets
Tickets	60.00 for 15	60.00 for 15	75.00 for 15

St. Albert Transit

R / C Ratio

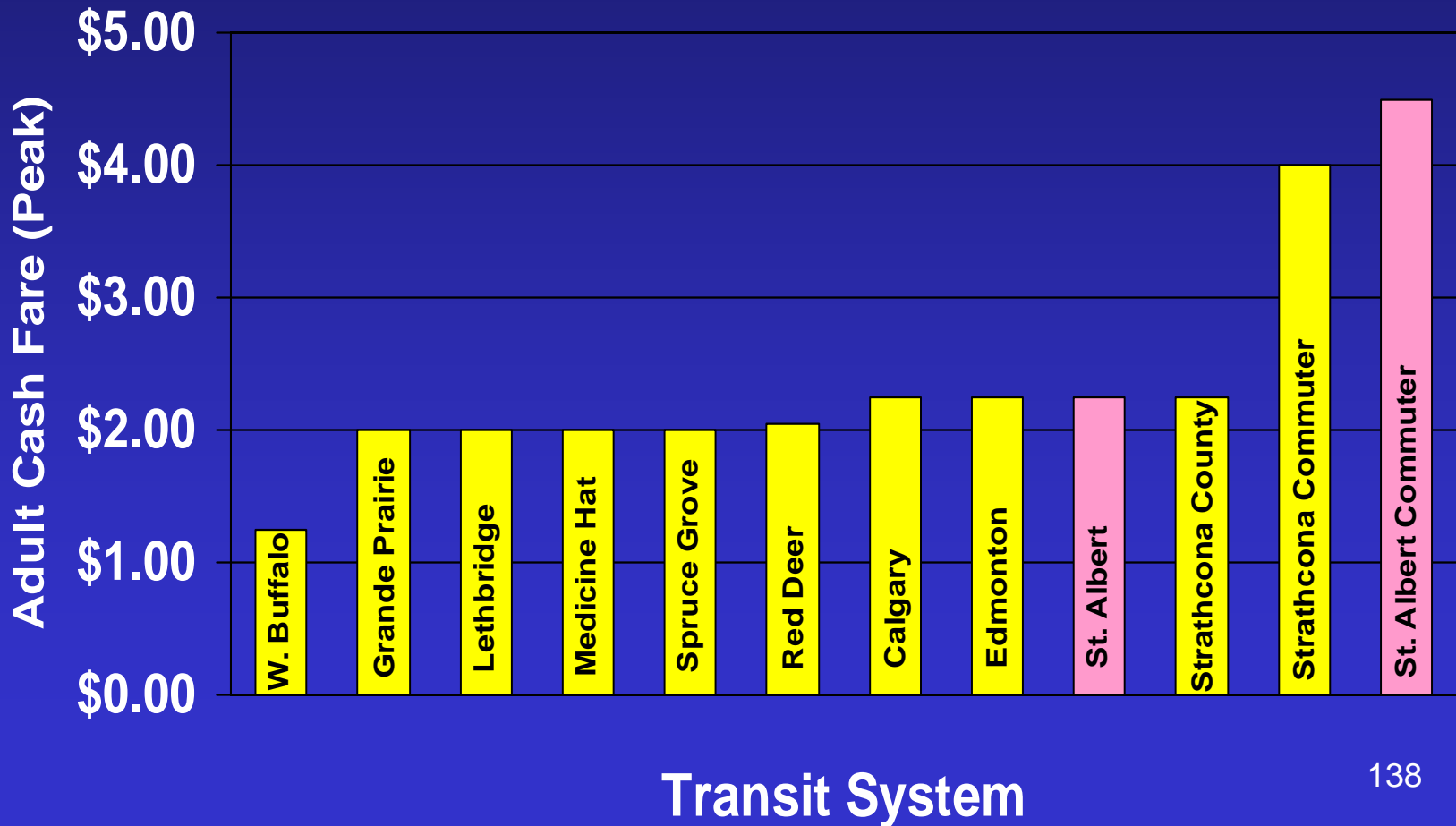
Scenario	2006	2007	2008
Base Budget	41.8 %	40.6 %	38.4%
With Fare Increase BC		41.6 %	40.2 %

St. Albert Transit



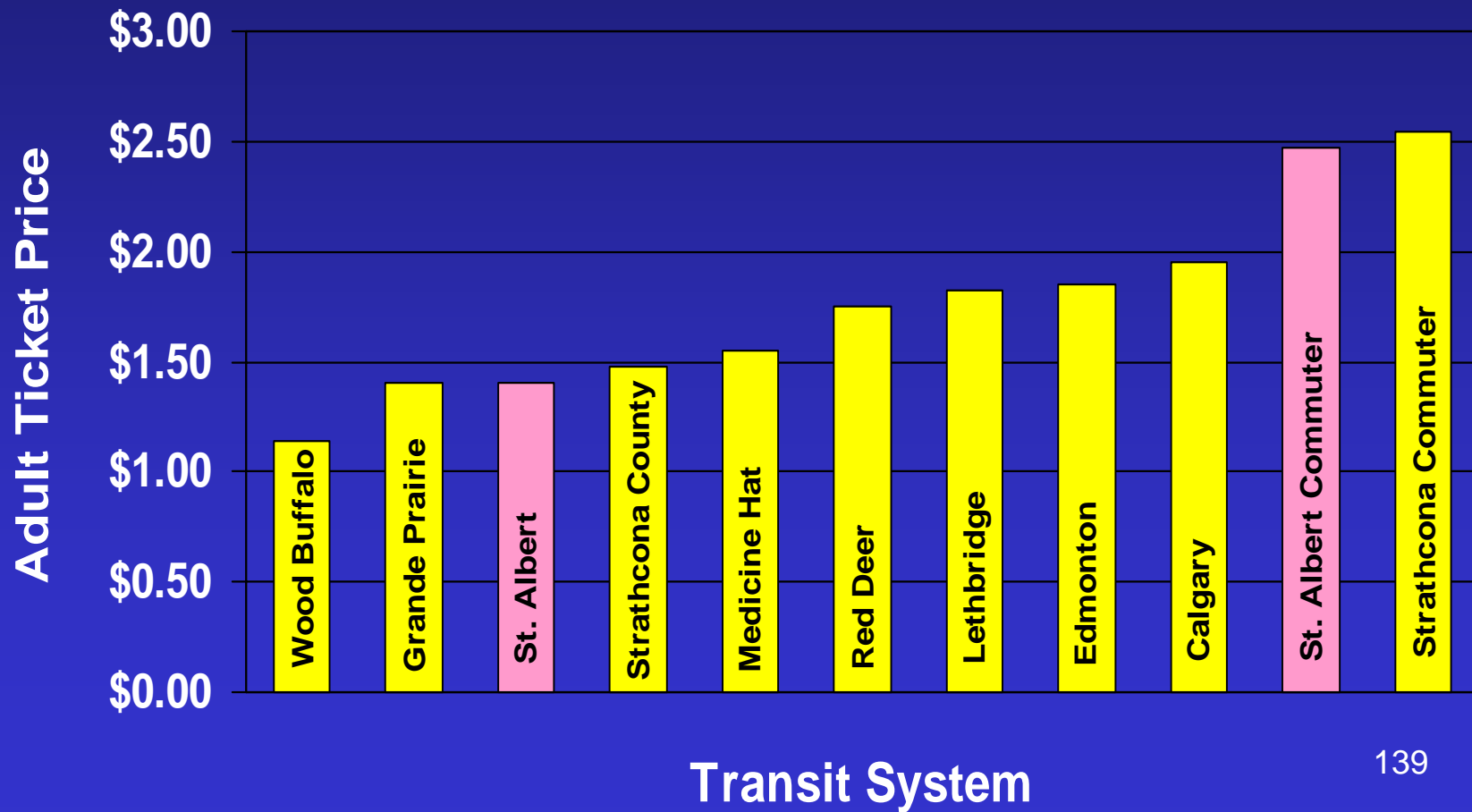
St. Albert Transit

2006 Cash Fares in Alberta



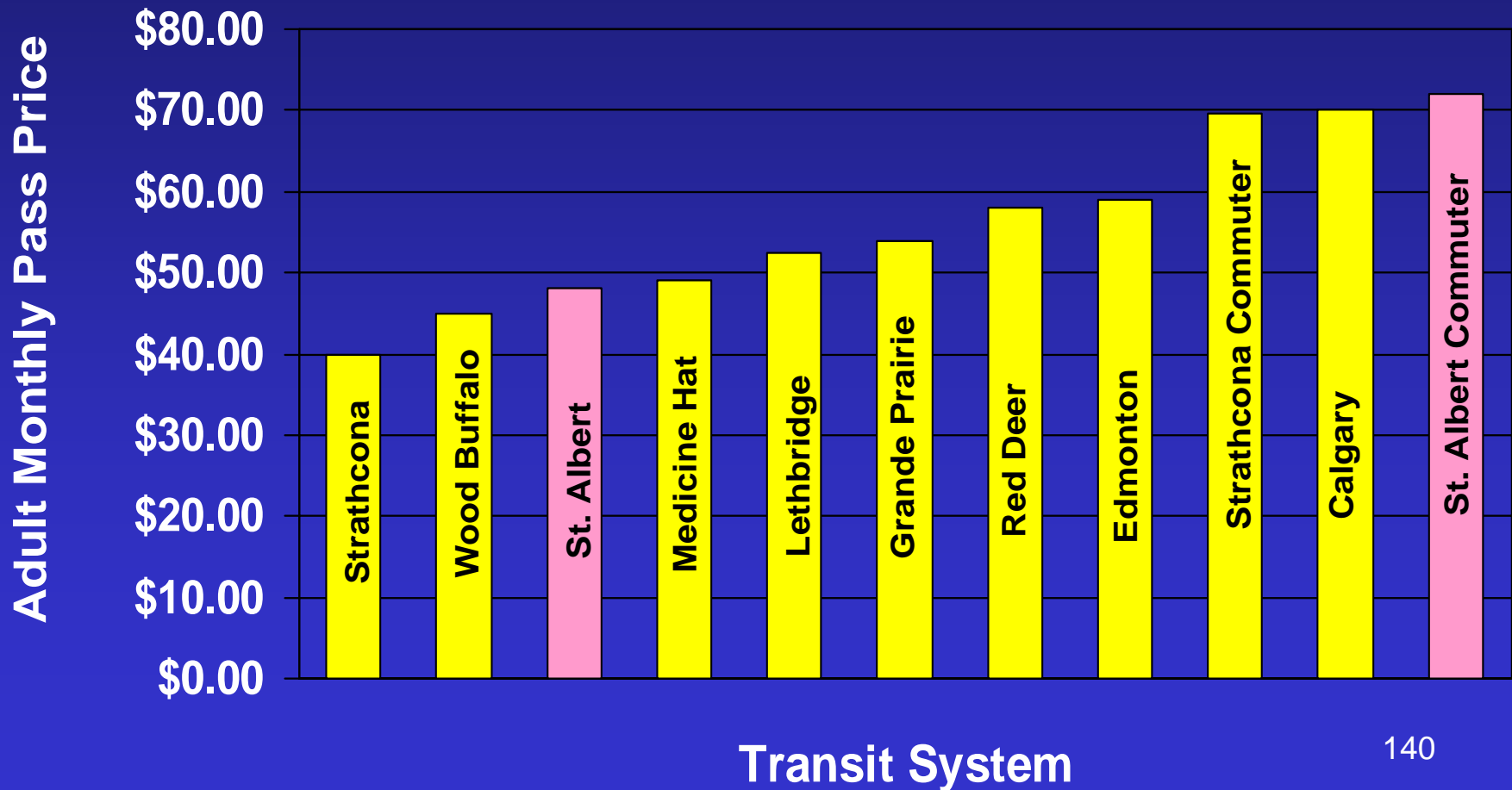
St. Albert Transit

2006 Ticket Prices in Alberta



St. Albert Transit

2006 Pass Prices in Alberta



St. Albert Transit

DISCUSSION