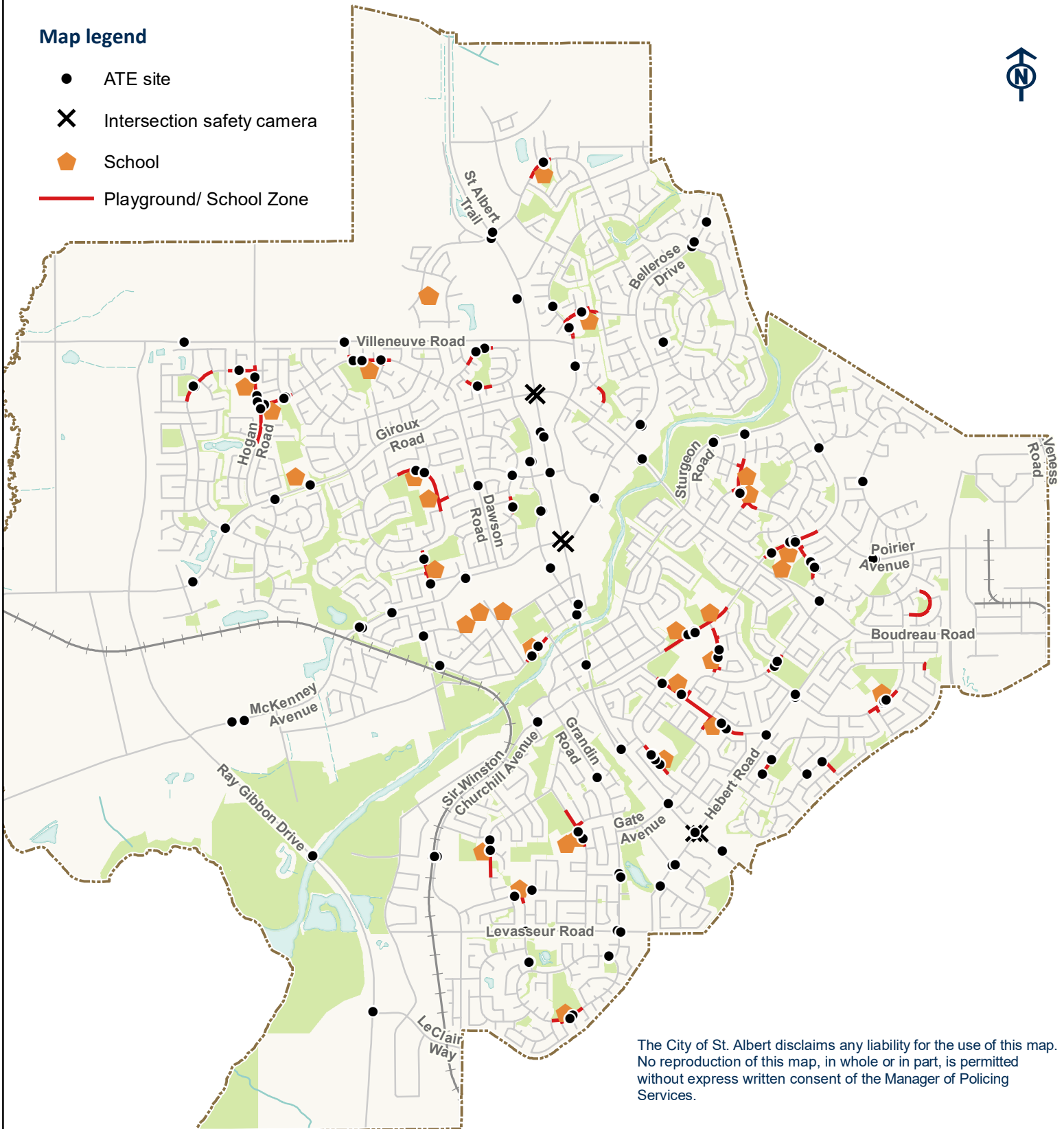


Automated Traffic Enforcement Locations

September, 2018

Map legend

- ATE site
- ✕ Intersection safety camera
- 🏠 School
- Playground/ School Zone



The City of St. Albert disclaims any liability for the use of this map. No reproduction of this map, in whole or in part, is permitted without express written consent of the Manager of Policing Services.



0 250 500 1,000 m