

2018 INTERSECTION COLLISIONS

Fact Sheet 2

This Fact Sheet provides an overview of Intersection collisions that occurred in 2018

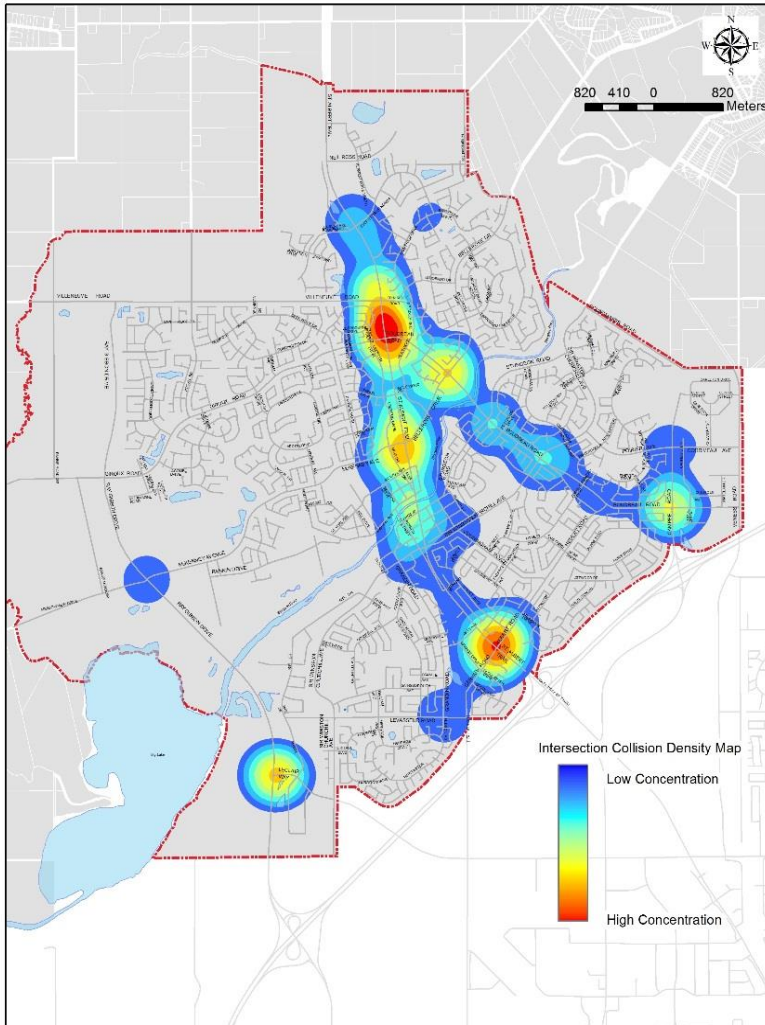


Figure 1.0: Intersection Collision Heat Map

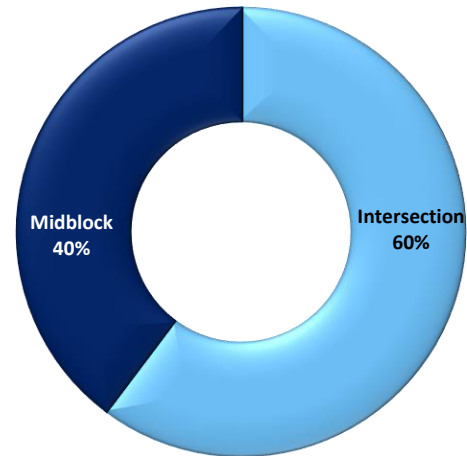


Figure 2.0: Network Collision Location Type

Intersection Collision Info	Frequency
Total Collisions	610
Fatal Collisions	0
Injury Collisions	183
Property Damage Only Collisions	427
Midblock Collision Info	
Frequency	
Total Collisions	402
Fatal Collisions	0
Injury Collisions	54
Property Damage Only Collisions	348

Quick Facts: 2018 Intersection Collisions

- 60% of Total Collisions Occurred at Intersections
- 77 % Injury Collisions Occurred at Intersections
- 183 Injury Collisions resulted in:
 - 9 Major Injuries
 - 223 Minor Injuries
- 49% of Intersection Collisions (299 of 610 Collisions) involved Rear End Collisions
 - 35% of these Rear End Collisions resulted in Injuries
- 11% of Intersection Collisions (69 of 610 Collisions) involved Left Turn Across Path Collisions
 - 33% of Left Turn Across Path collisions were resulted in Injuries
- St. Albert Trail & Giroux Rd/Boudreau Rd Ranked One in 2018 as High Collision Intersection

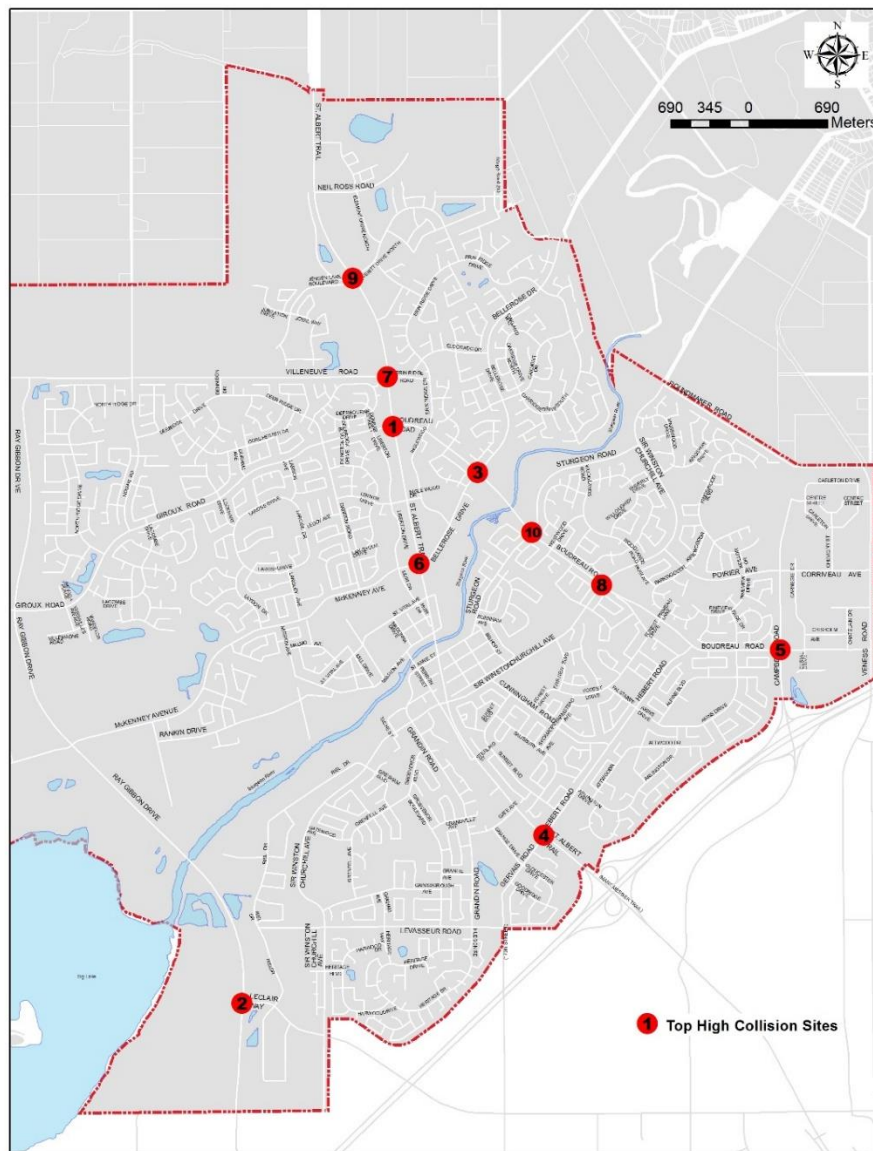


Figure 3.0: 2018 Top 10 Collision Locations from Frequency

Rank	Intersection Name	Collision Frequency (2018)
1	St. Albert Tr & Giroux Rd / Boudreau Rd	35
2	Ray Gibbon Dr & LeClair Way	32
3	Boudreau Rd & Bellerose Dr	31
4	St. Albert Tr & Hebert Rd / Gervais Rd	29
5	Campbell Rd & Boudreau Rd	28

Next Steps

- Intersection improvements:
 - St. Albert Tr & Giroux Rd / Boudreau Rd was reconstructed in 2019 and will be monitored.
 - Ray Gibbon Dr & LeClair Way is scheduled for redesign / construction in 2020.
- An In-service Safety Review completed at Boudreau Rd & Bellerose Dr in 2020, recommendations of improvements will be reviewed and advanced accordingly.