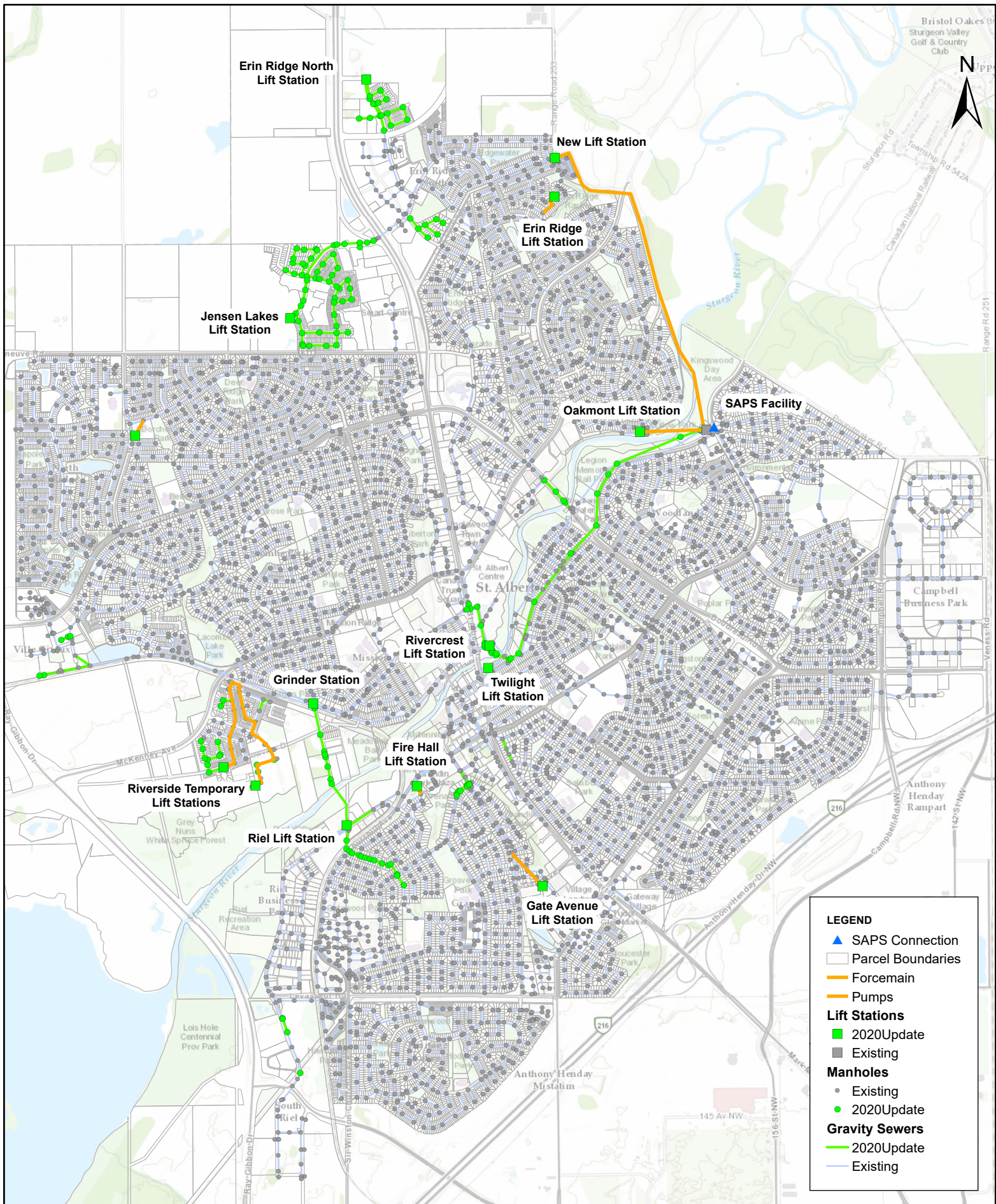


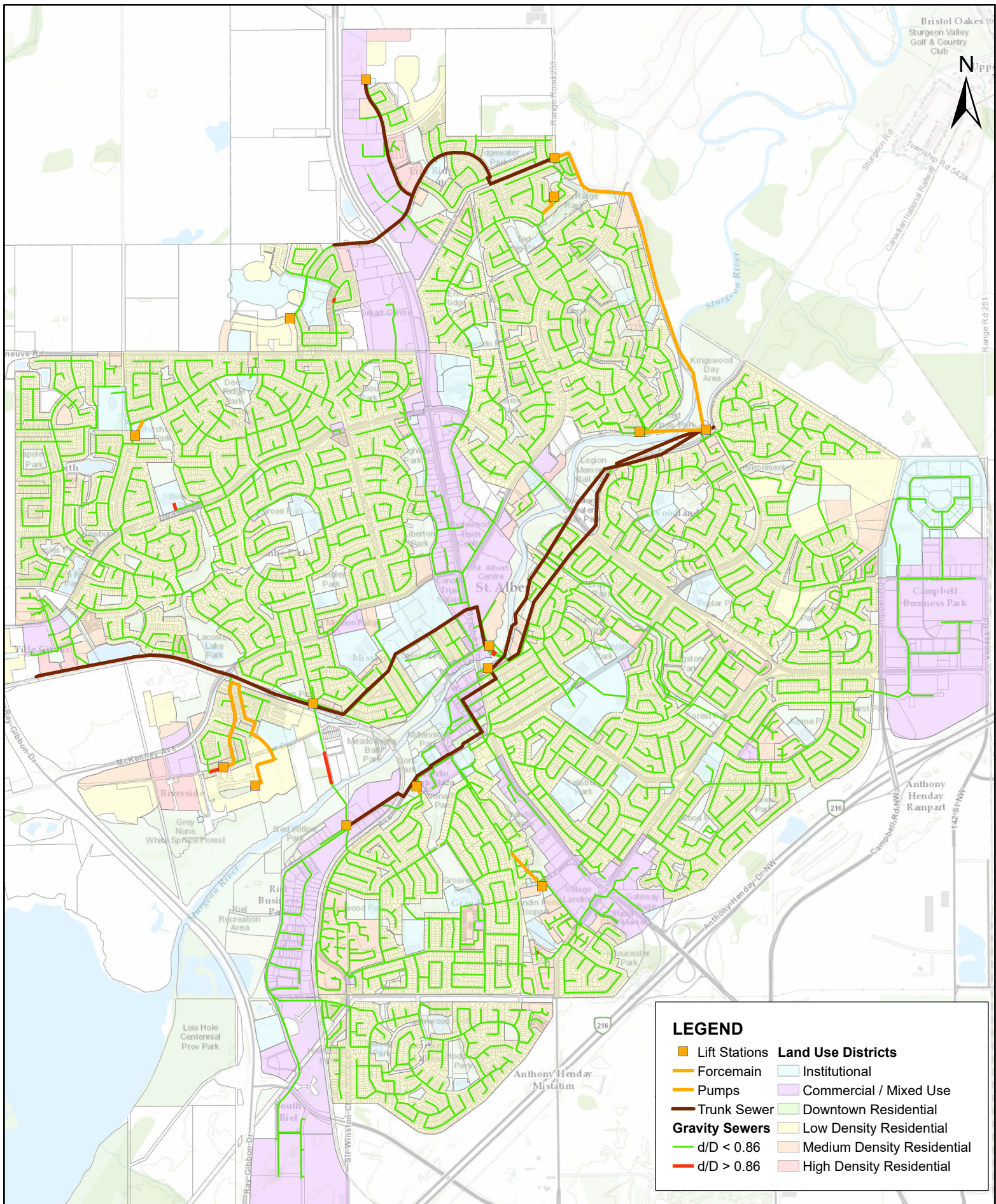
# APPENDIX

**A**

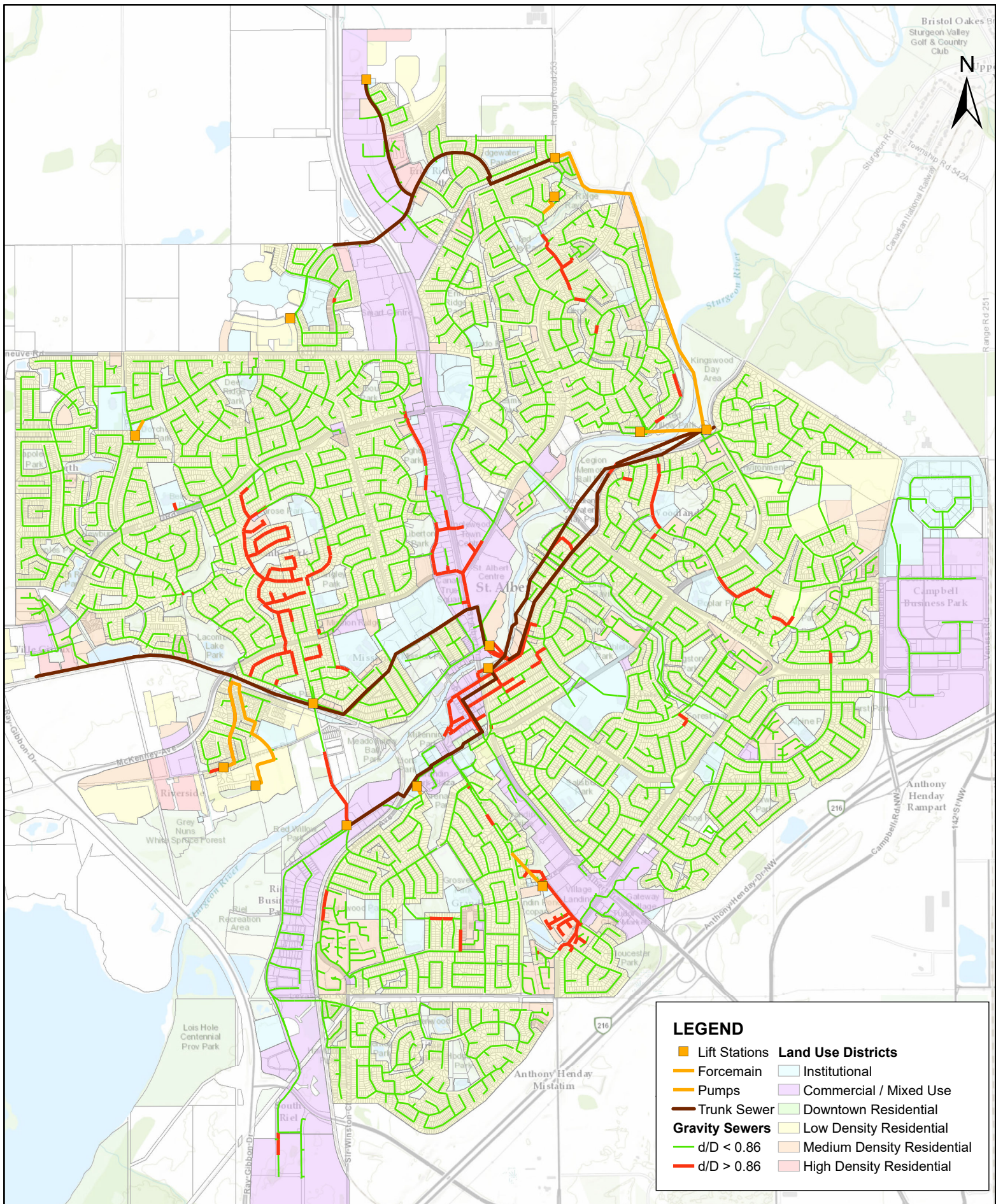
WASTEWATER  
SYSTEM FIGURES



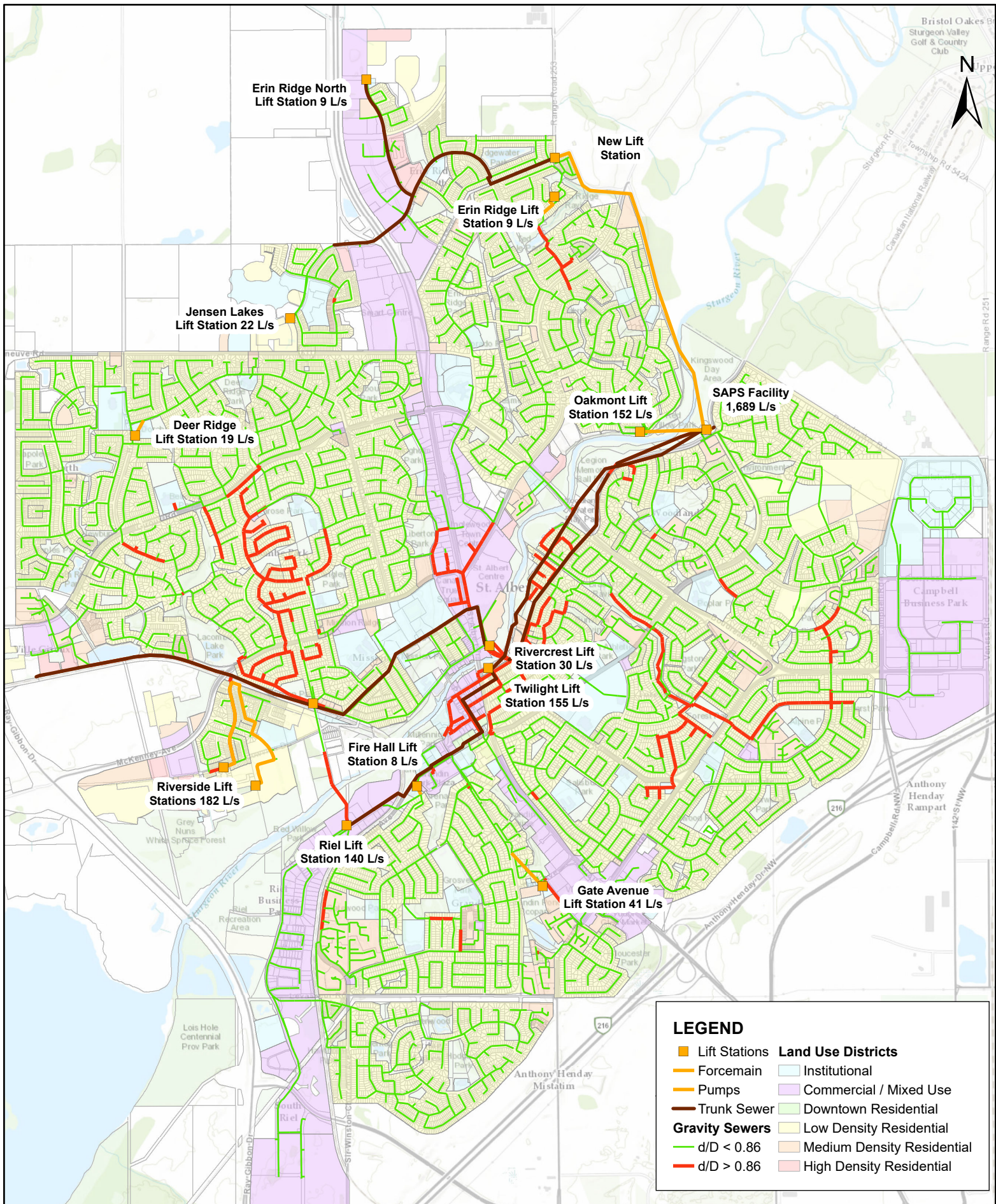












### LEGEND

- |   |  |
|---|--|
| <span style="color: orange;">■</span> Lift Stations | <b>Land Use Districts</b>  |
| <span style="color: orange;">—</span> Forcemain     | <span style="background-color: #e0f0ff; border: 1px solid black; display: inline-block; width: 15px; height: 10px;"></span> Institutional              |
| <span style="color: orange;">●</span> Pumps         | <span style="background-color: #f0e0ff; border: 1px solid black; display: inline-block; width: 15px; height: 10px;"></span> Commercial / Mixed Use     |
| <span style="color: brown;">—</span> Trunk Sewer    | <span style="background-color: #d0f0d0; border: 1px solid black; display: inline-block; width: 15px; height: 10px;"></span> Downtown Residential       |
| <span style="color: green;">—</span> Gravity Sewers | <span style="background-color: #fff0e0; border: 1px solid black; display: inline-block; width: 15px; height: 10px;"></span> Low Density Residential    |
| <span style="color: red;">—</span> d/D < 0.86       | <span style="background-color: #ffe0d0; border: 1px solid black; display: inline-block; width: 15px; height: 10px;"></span> Medium Density Residential |
| <span style="color: red;">—</span> d/D > 0.86       | <span style="background-color: #ffd0d0; border: 1px solid black; display: inline-block; width: 15px; height: 10px;"></span> High Density Residential   |



Client/Project:  
 City of St. Albert  
 2020 Utility Master Plan

## Existing Wastewater System Pipe Capacity (1:25-Year 24-Hour Storm)

Project No: 20M-01312-00

Drawn By: Approved By:

VP

JM

### Figure A-4

Scale

0 200 400 800  
 Meters

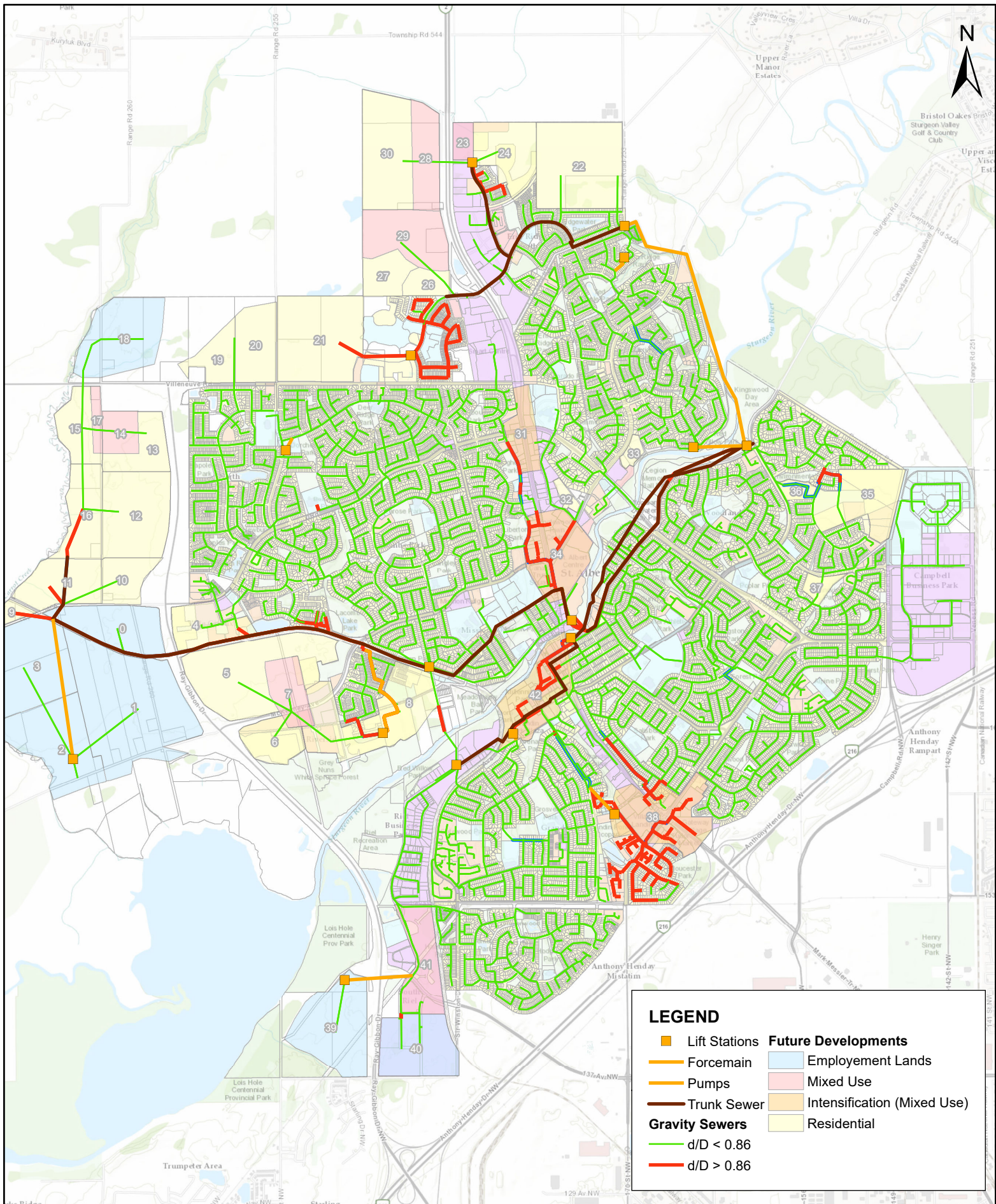
PCS:

NAD 83 UTM Z12

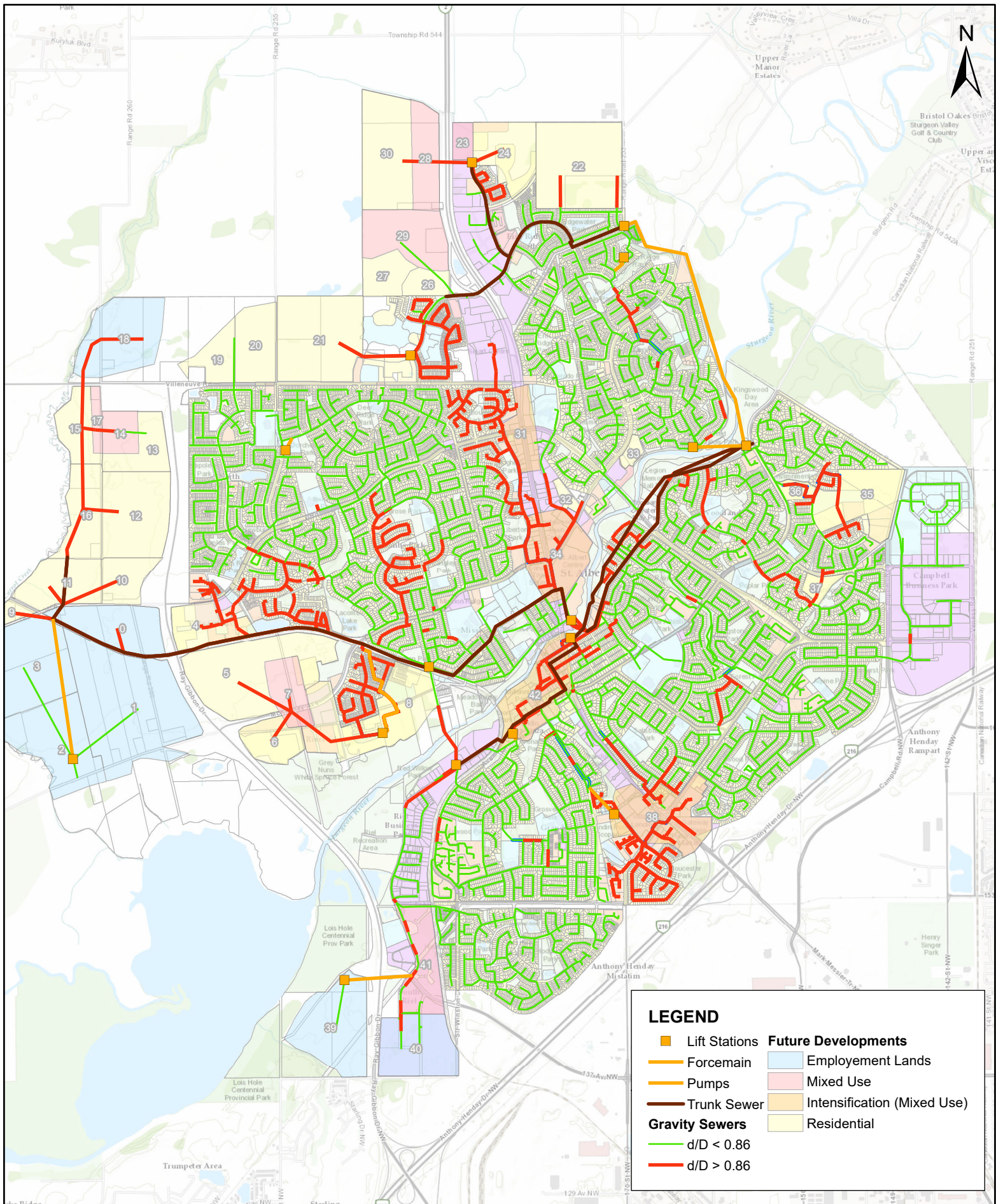
Revision

Date: 11/26/2021









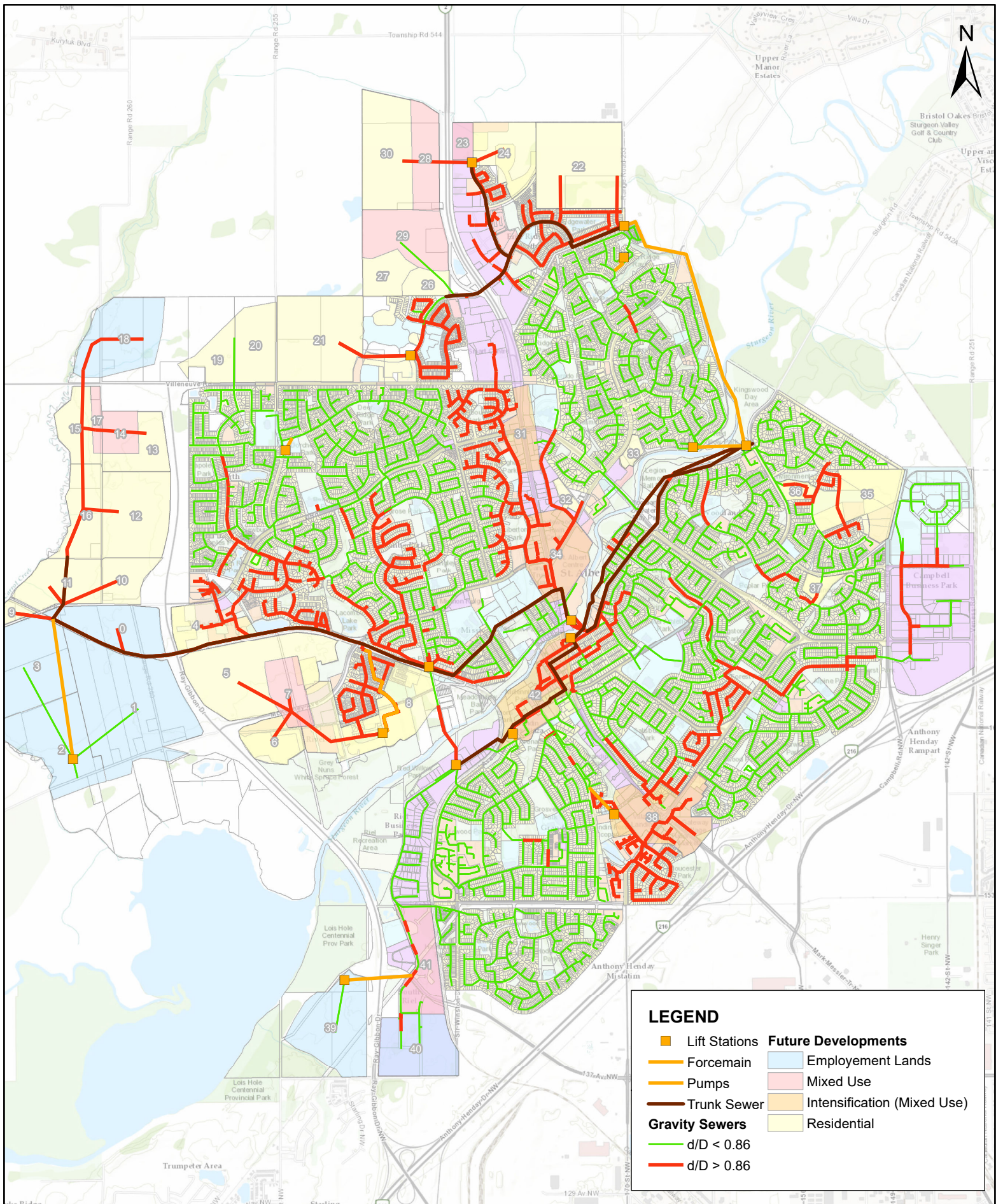
**LEGEND**

- Lift Stations
- Forcemain
- Pumps
- Trunk Sewer
- Gravity Sewers
- d/D > 0.86

**Future Developments**

- Employment Lands
- Mixed Use
- Intensification (Mixed Use)
- Residential





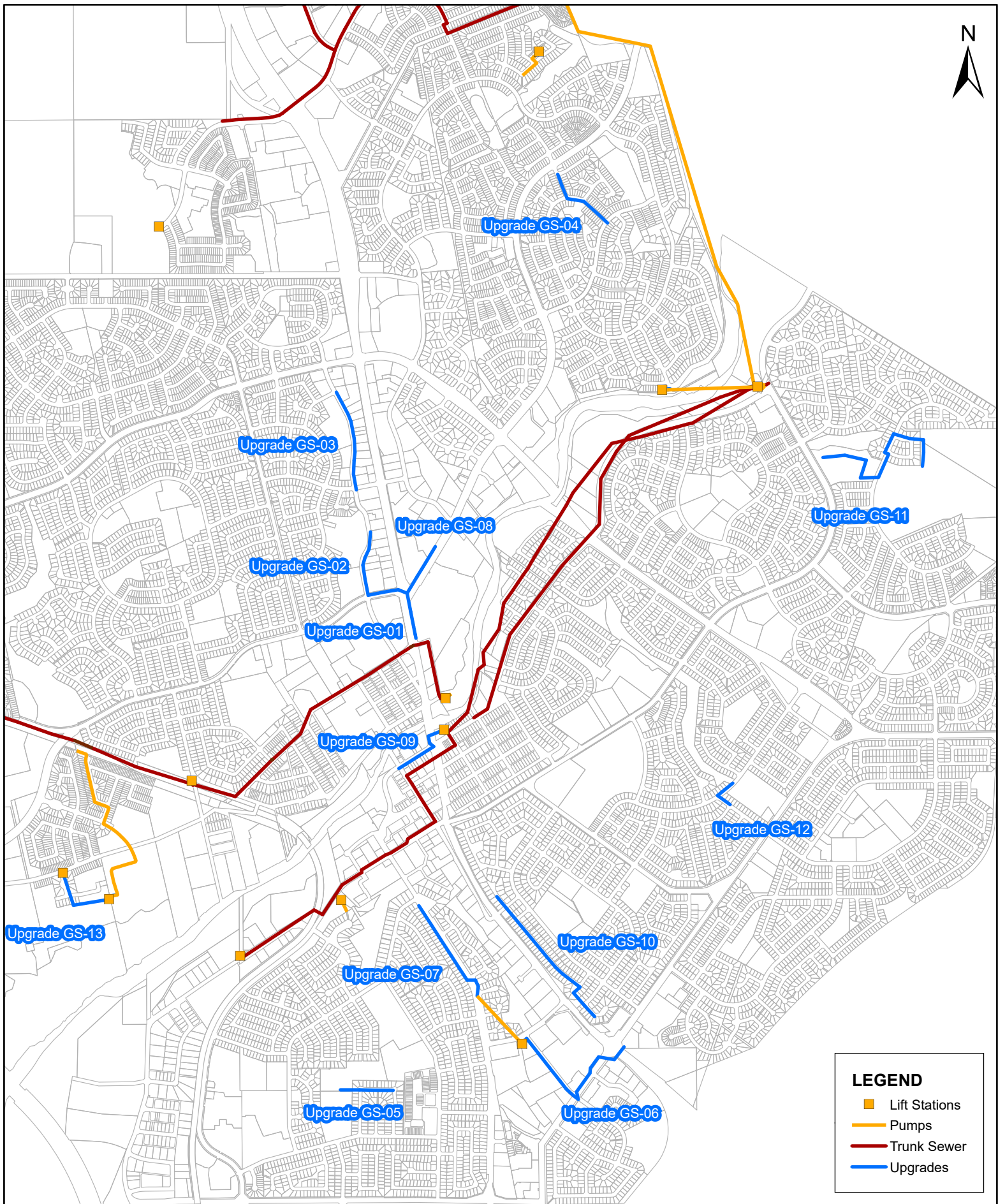
**LEGEND**

- Lift Stations
- Forcemain
- Pumps
- Trunk Sewer
- Gravity Sewers
- d/D < 0.86
- d/D > 0.86

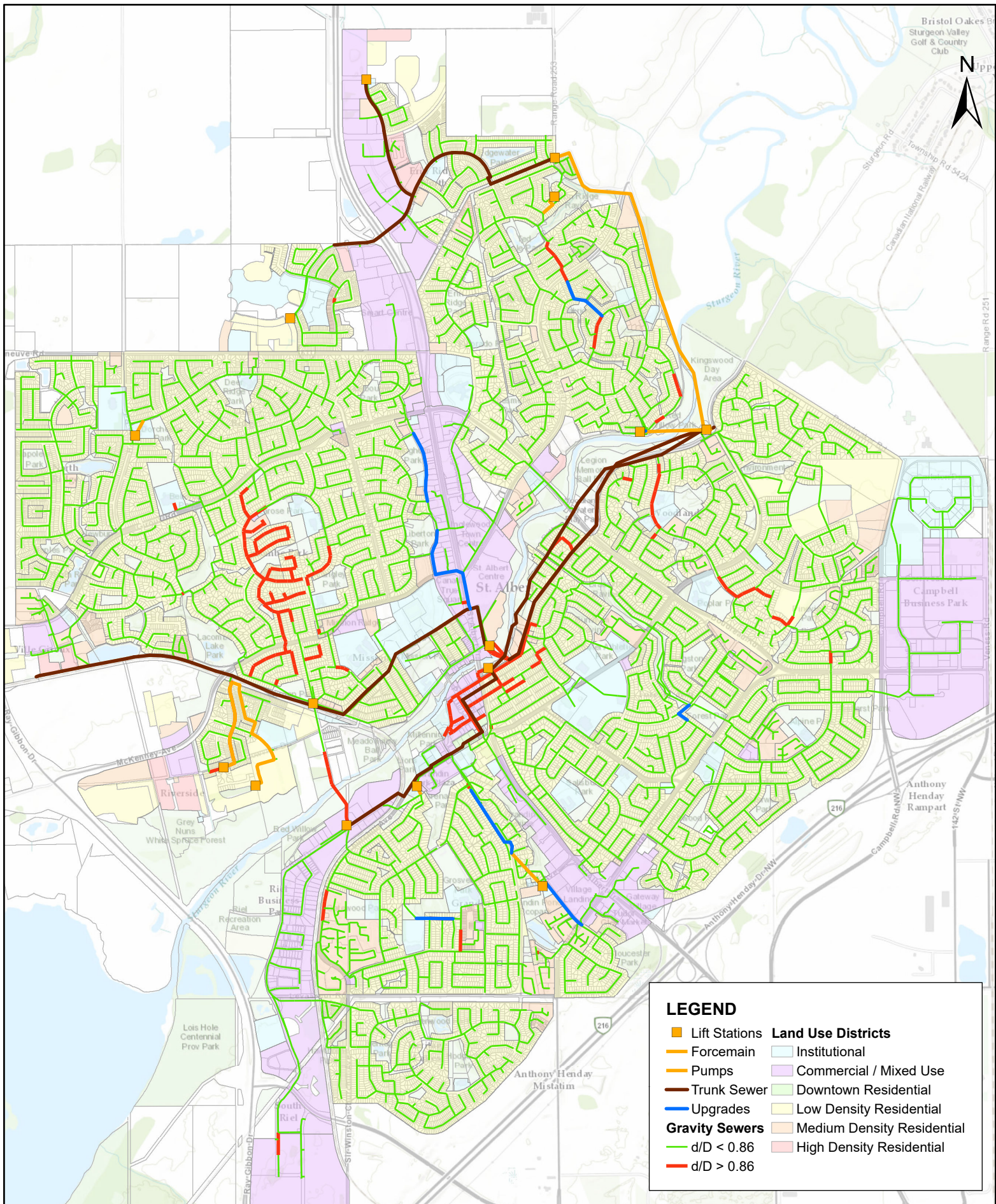
**Future Developments**

- Employment Lands
- Mixed Use
- Intensification (Mixed Use)
- Residential

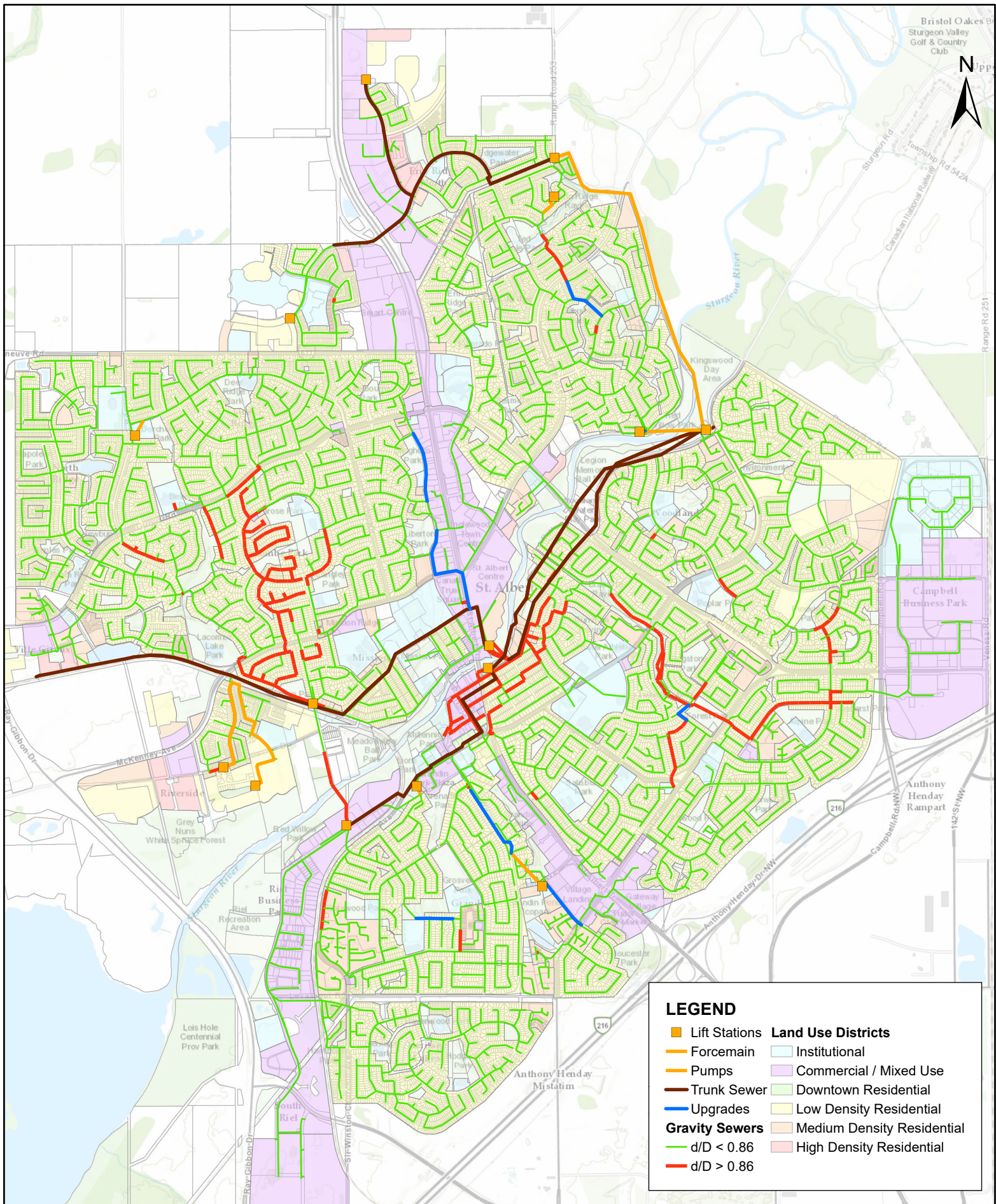












Client/Project:



2020 Utility Master Plan

## Existing Wastewater System Pipe Capacity With Upgrades (1:25-Year 24-Hour Storm)

Project No: 20M-01312-00

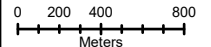
Drawn By: Approved By:

VP

JM

**Figure A-10a**

Scale



PCS:

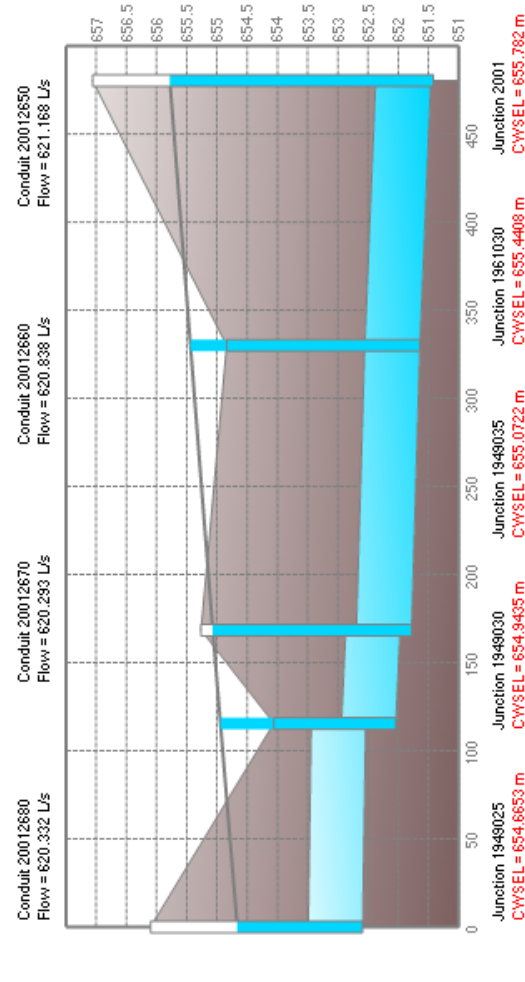
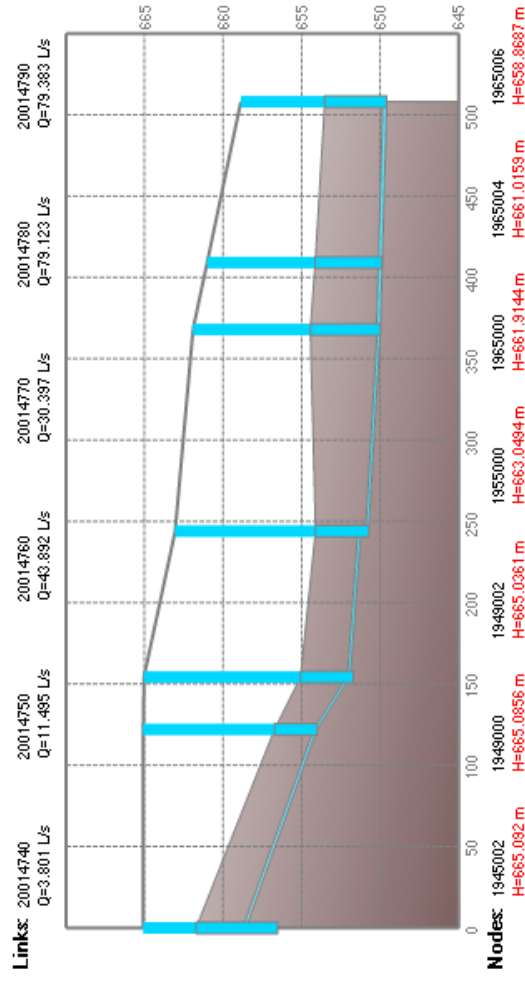
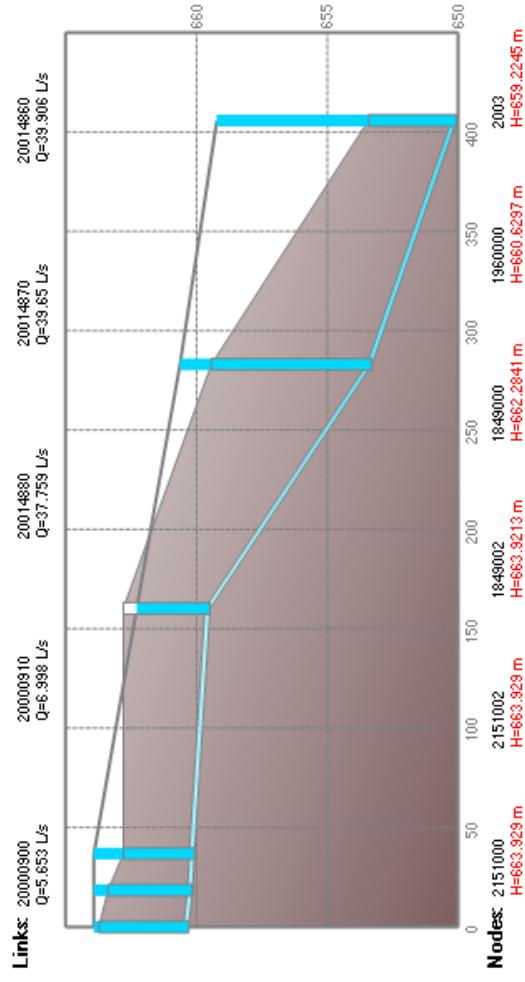
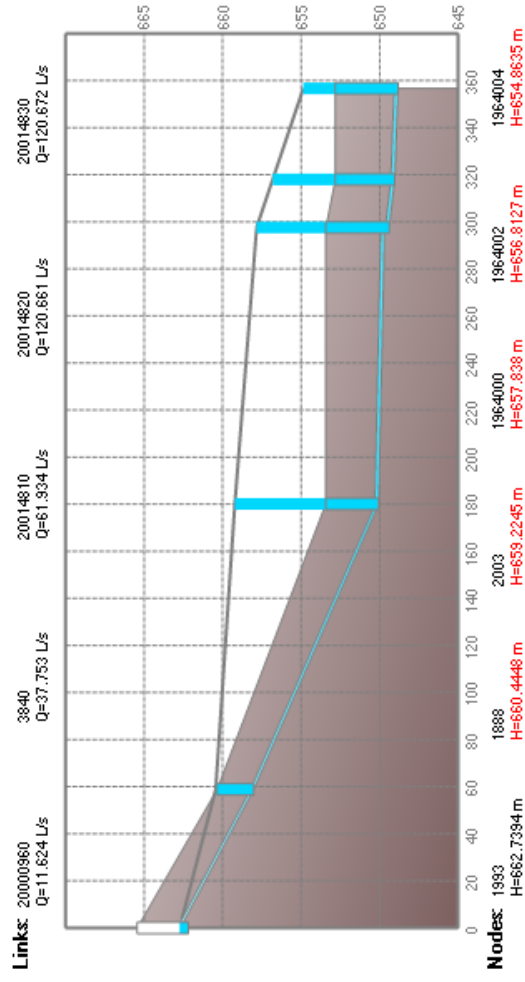
NAD 83 UTM Z12

Revision

Date: 11/26/2021

This drawing and its contents are the property of WSP Canada Inc.. Any unauthorised employment of reproduction, in full or in part, is forbidden.





**Figure A-10b Existing Wastewater System Surge for the 1:25-Year 24-Hour Storm**  
(with MH and Pipe IDs)



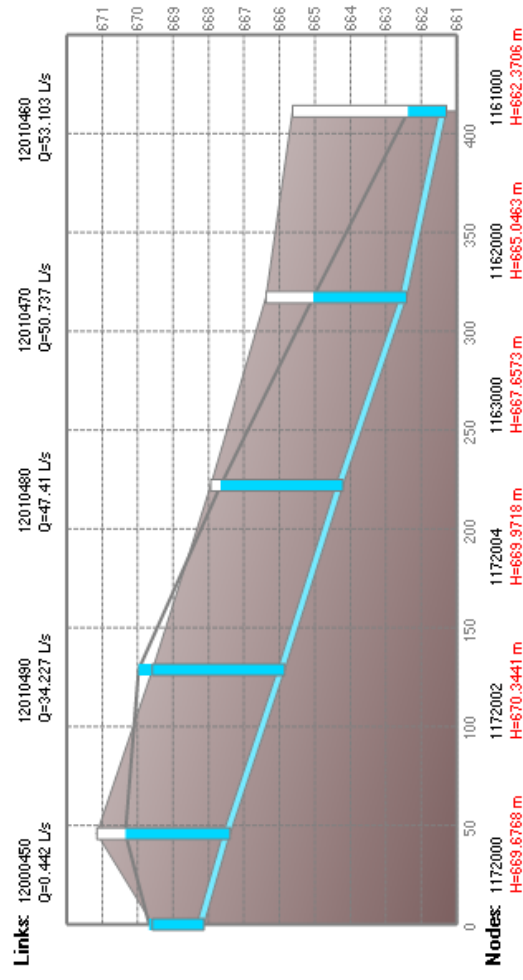
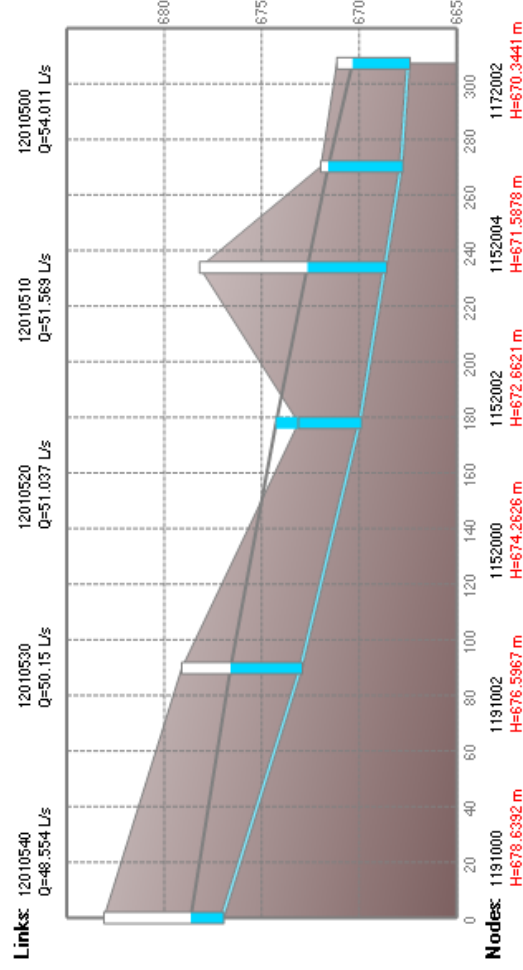
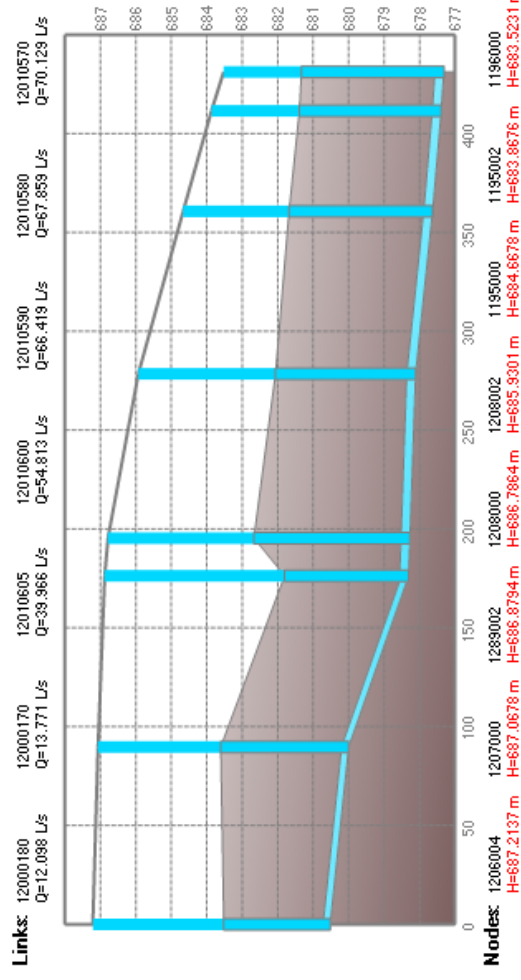
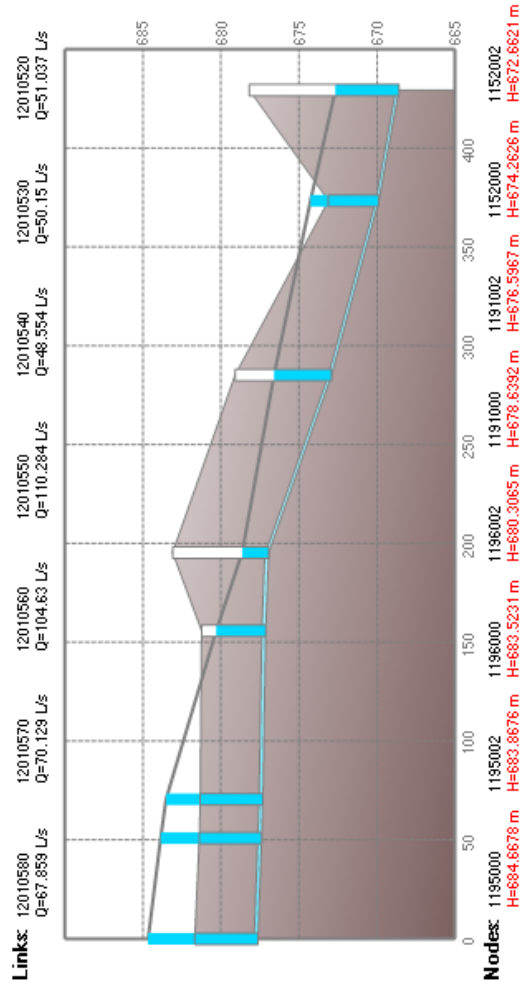


Figure A-10c Existing Wastewater System Surge for the 1:25-Year 24-Hour Storm

(with MH and Pipe IDs)



