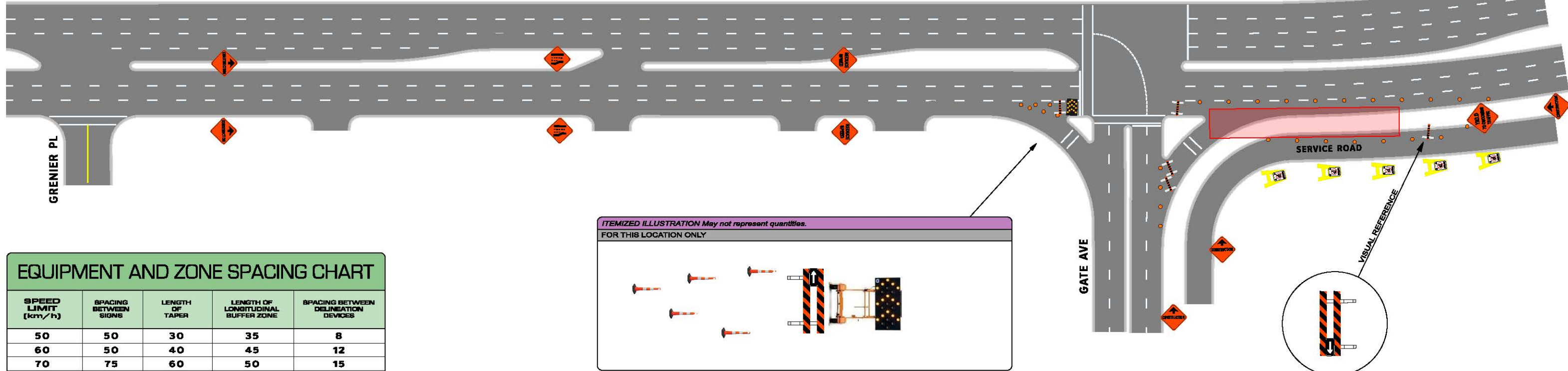
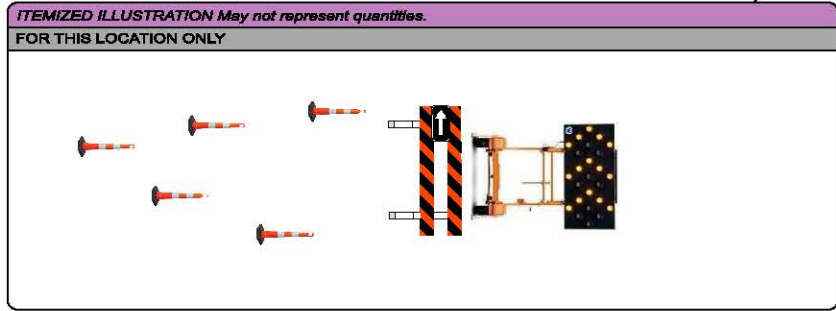


ST ALBERT TRAIL

ST ALBERT TRAIL



EQUIPMENT AND ZONE SPACING CHART				
SPEED LIMIT (km/h)	SPACING BETWEEN SIGNS	LENGTH OF TAPER	LENGTH OF LONGITUDINAL BUFFER ZONE	SPACING BETWEEN DELINEATION DEVICES
50	50	30	35	8
60	50	40	45	12
70	75	60	50	15
80	100	80	60	15
90	100	105	65	18
100	125	125	70	18
110	150	145	75	20
Distance in meters	ADVANCE WARNING	TAPER OR TRANSITION	BUFFER ZONE	WORK ZONE & TERMINATION



LEGEND QUANTITIES LISTED ARE FOR THIS PAGE ONLY					
	WD-101	5		YIELD TO ONCOMING TRAFFIC	1
	WD-A-33XR	2		WD-1161-L	5
	REDUCE SPEED	2		TF-18 SIGN STAND	10
				NO PARKING SIGN	5
				42" CONE	20
				DELINEATION POSITION	
				BARRICADE POSITION	
				SEQUENTIAL ARROWBOARD	1

Traffic Accommodation Plans and Equipment Provided by

STREETLIGHT REPLACEMENT LANE CLOSURE ON MULTI LANE ARTERIAL ROADWAY ST ALBERT TR AT GATE AVE ST ALBERT

CONTRACTOR	
CONTRACT #	JOB #

THIS DRAWING IS NOT TO SCALE; ROADWAYS ARE TRUNCATED and/or SKEWED TO FIT ON PAGE AND IDENTIFY DETAIL. ACTUAL QUANTITY AND EXACT POSITIONING OF EQUIPMENT MAY VARY DEPENDING ON DISTANCES, VISIBILITY, EXISTING SIGNAGE AND LAYOUT OF ROADWAY.
DELINEATION DEVICES COULD BE CONSIDERED FOR SUBSTITUTION TO ACCOMMODATE WIDTH OF ROADWAY OR MANOEVURABILITY IN WORK ZONE.

- NOTES:
1. ADVANCE WARNING SIGN SIZES ARE 90cm sq. MOUNTED ON SPRING LOADED UPRIGHT STANDS.
 2. SIGN SPACING WILL BE 50m APART.
 3. 42" CONES ARE USED ALONG THE WORK ZONE AT 8m APART.
 4. NO PARKING SIGNS WILL BE PLACED 24 HRS PRIOR TO WORK.
 5. THE WORK ZONE IS THE AREA SHADED IN RED.
 6. THIS IS A SHORT DURATION PROJECT.

DRAWING # 120301-1
PAGE # 1 / 1
VERSION # 1 ILLUSTRATED BY HM
DATE OF DRAWING MARCH 2 2012

