

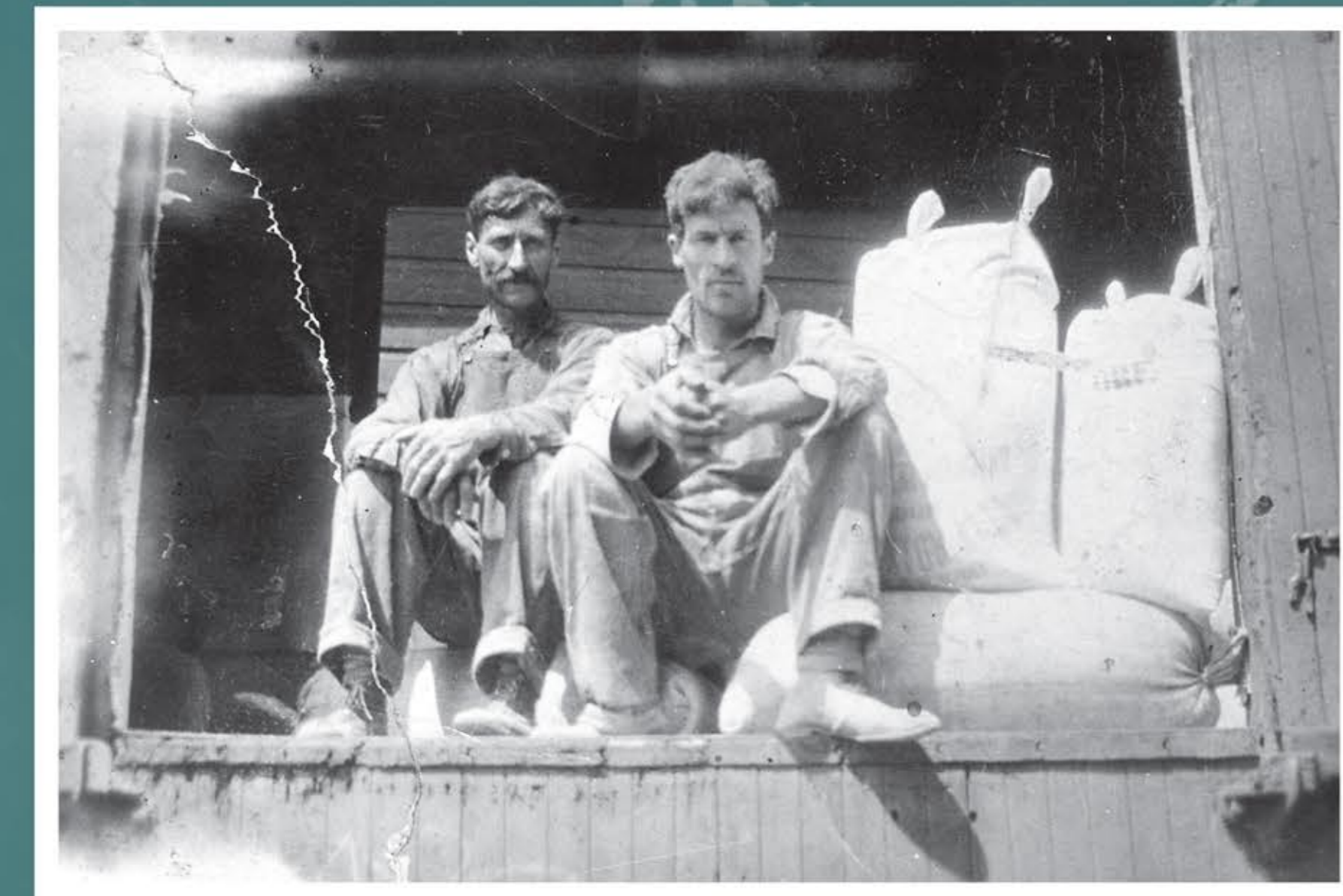
# FOUNDERS' WALK

# Founders' Walk

## Legend

- |                                       |                                     |                                      |
|---------------------------------------|-------------------------------------|--------------------------------------|
| <b>1</b> The Early Years              | <b>11</b> The Mission               | <b>14</b> The Grey Nuns              |
| <b>2</b> Buffalo Hunt                 | <b>12</b> Mission Hill Introduction | <b>15</b> a. The Hudson's Bay Post   |
| <b>3</b> Community Recognition Garden | <b>13</b> a. An Inspiring Location  | <b>15</b> b. The Mission District    |
| <b>4</b> Downtown St. Albert          | <b>13</b> b. Building the Mission   | <b>16</b> a. Founders' Walk Map      |
| <b>5</b> Founders' Court              | <b>13</b> c. A Growing Downtown     | <b>16</b> b. Trails and Transport    |
| <b>6</b> Bruin Inn                    | <b>13</b> d. Founders' Promenade    | <b>17</b> a. St. Albert's River Lots |
| <b>7</b> The First Bridge             | <b>13</b> e. Schools on the Hill    | <b>17</b> b. A Farming Settlement    |
| <b>8</b> Mission Park                 | <b>13</b> f. Expanding Education    |                                      |
| <b>9</b> The Métis                    | <b>13</b> g. Seven Hills            |                                      |
| <b>10</b> Education                   | <b>13</b> h. St. Albert Place       |                                      |

- Founders' Walk - Phase 1
- Founders' Walk - Phase 2
- Founders' Walk - Phase 3 (Future Development)
- Municipal Historic Resource
- Provincial Historic Resource
- Provincial Historic Site



Sam Rowland and Bob Perrault, 1915  
Musée Héritage Museum, St. Albert Historical Society fonds, 1986.23.05



Mrs. Ternan with children in front of Hogan House, 1915  
Musée Héritage Museum, St. Albert Historical Society fonds, 1986.51.05



Veness' and Saunders' Hardware Store - ca. 1906-1915  
Musée Héritage Museum, 2003.01.800

