

INFORMATION PACKAGE 2024

Meeting with Cemetery Services is done by appointment only

For more information or to book an appointment, please contact the Cemetery Services Department at 780-459-1500 or email cemetery@stalbert.ca.

ST. ALBERT MUNICIPAL CEMETERY

CEMETERY BURIAL OPTIONS

Ash Burial

An ash plot holds up to four urns in each plot. Plots are available in the sunshine or near the trees.

Ash Scattering

The scattering garden offers a nice alternative for families whom do not wish to inter their loved ones but would like to have a permanent and accessible place to remember them by. Our designated area consists of small white rocks that forms an outside circle around the Memorial Wall/Columbaria.

Columbarium

Currently the cemetery has four Columbaria. Columbaria niches can hold up to two (2) or three (3) urns depending on the level purchased.

Field of Honour

A portion of the cemetery has been dedicated as a Field of Honour for the burial of any veteran who has seen active service. Veterans can be laid to rest with their spouse or one next of kin.

Memorial Pillow

This concrete pillow allows one to purchase a 4" x 3" space which includes a customized plaque. The Memorial Pillow is located in the Scattering Garden.

Traditional Standard Burial

When selecting a traditional burial space, there is the option to choose a standard plot or a double depth plot. Plots are available in the sunshine or near trees.

Meeting with Cemetery Services is done by appointment only

For more information or to book an appointment, please contact the Cemetery Services Department at 780-459-1500 or email cemetery@stalbert.ca.

ST. ALBERT MUNICIPAL CEMETERY

ADDITIONAL SERVICES AVAILABLE

Pre-planning Appointments

Pre-planning saves families from having to make decisions during a difficult time. If you wish to be involved in how you are remembered, planning ahead gives you the opportunity. One of our Cemetery Service Administrators will assist you in making choices that suit your needs.

Fall Clean Up

Annually, Public Works conducts regular maintenance and clean-up activities at the St. Albert Municipal Cemetery. Each fall, an advertisement will be posted asking all families to remove any personal articles, flowers, and structures from the gravesites prior to winter (usually mid to late October). All personal items left at grave sites after this date will be removed.

Winter Plot Markers

Complimentary Winter Markers are available upon request. Please contact the Cemetery Services Department at 780-459-1500 for more information.



Meeting with Cemetery Services is done by appointment only

For more information or to book an appointment, please contact the Cemetery Services Department at 780-459-1500 or email cemetery@stalbert.ca.

ST. ALBERT MUNICIPAL CEMETERY

CEMETERY STANDARDS

When a grave site must be prepared for an interment, **a minimum of 72 regular working hours' notice shall be given to the City prior to the interment.** *Note: Saturdays, Sundays, statutory or declared holiday hours shall not be counted as regular working hours.*

Grave Marker

All markers must be flat and made from enduring granite or marble, which are mounted to a cement base even with the ground. The preferred edge style of the flat marker is a rough edge, also known as a rock pitch. Vases of suitable metal construction are permitted when imbedded in a flat marker so that the vase is recessed flush with the ground. Flat Markers are to be installed by cemetery staff only.

Engraving and purchasing of a marker is a transaction conducted between the family and a monument company. Prior to installation of a flat marker, the family must have paid the marker installation fee. Once the marker installation fee has been paid, Public Works will install a protective concrete foundation that surrounds the flat marker. The family is responsible for the maintenance, cleaning and replacement of a memorial marker and the City assumes no liability or responsibility for loss or damage to any memorials through acts of vandalism or natural erosion. The City will repair and replace existing memorial foundations if necessary due to maintenance and or safety concerns as determined by cemetery staff, at no charge to the plot owner. Public Works performs constant cemetery maintenance therefore structures of any kind, other than approved ones, are not permitted within the cemetery. Existing monuments that do not meet current specifications will be grandfathered, however, in the event the monument needs replacement, the new monument(s) is required to meet the existing regulations in place at the time of purchase.

Permitted Grave Marker Sizes

- **Standard & Double Depth Plot:** No minimum size. Up to a maximum of 39" x 18".
- **Side by Side Standard Plot:** One marker centered across the plots. No minimum size. Up to a maximum of 42" x 18".
- **Single Ash Plots:** No minimum size. Up to a maximum of 39" x 18".
- **Side by Side Ash Plots:** No minimum size. Up to a maximum of 39" x 18".

Installation and Deliveries of Grave Markers

At the beginning of each October, installation of any flat marker is subject to weather conditions, therefore the City will not guarantee a flat marker installation after October 1st. The City of St Albert will not install or accept any deliveries of flat markers from late October until the start of Spring each year. Installation will resume in the spring.

Meeting with Cemetery Services is done by appointment only

For more information or to book an appointment, please contact the Cemetery Services Department at 780-459-1500 or email cemetery@stalbert.ca.

ST. ALBERT MUNICIPAL CEMETERY

Vases

As property of the family, it is the family's responsibility to maintain and replace any vases. Vases have a limited lifespan and are not under warranty by the cemetery. A vase installed in a northern climate is subject to extreme changes in temperature and is accessible to people, wild-life and unforeseen factors that will affect the life of the vase. Depending upon the composition of the vase it should be expected that replacement vases will need to be purchased periodically by the plot owner due to normal wear and tear. Vases that are broken and considered a maintenance hazard will be removed by the cemetery staff.

Casket Liner, Casket Vaults/Ash Urn Vaults

- Casket Vaults are not required nor recommended as **all caskets must be interred with a liner.**
- Casket Vault dimension cannot exceed 48" x 96" and will be installed by, and at the cost of the supplier.
- Urn Vault dimensions cannot exceed 20" x 20".
- Proof of a vault purchase and vault dimensions are required prior to interment.

ASH BURIAL OPTIONS

Ash Plot and Marker

- Each ash plot is 48" by 48".
- Can accommodate up to four urns.
- One ash plot can only accommodate two urns when urns are placed into a vault.
- Ash plots cannot accommodate containers larger than 16" in diameter.
- Ash Plot Flat Marker dimensions can be up to 39" x 18". No minimum size requirements.
- Two markers are permitted but may not exceed the 4' x 4' plot size.
- Urns are placed as shown below:



Meeting with Cemetery Services is done by appointment only

For more information or to book an appointment, please contact the Cemetery Services Department at 780-459-1500 or email cemetery@stalbert.ca.

ST. ALBERT MUNICIPAL CEMETERY

Columbarium

- Can accommodate two or three small urns (depending on the level of niche chosen).
- No plaques, vases or similar material are to be attached to the outside of the Columbarium in any manner.
- The City supplies the granite niche door. It is the client's responsibility and cost to have it engraved with a monument company.
- Niche door fronts are to be inscribed in a modified Roman font.
- Niches cannot be sold back to the City of St. Albert once engraving has been started

COLUMBARIUM NICHE DOOR

Specifications

- The City of St. Albert will provide you with the granite niche door, but it is the families' responsibility and cost to have it engraved with a monument company.
- Niches can not be sold back to the City of St. Albert once engraving has been started.

Standards

- Niche doors may be lettered by sandblasting in a modified Roman font within the boundaries of a given niche door.
- The inscription should be centered on the door and scaled to the size chosen by the family in consultation with the monument design team.
- For consideration, the engraving may consist of:
 - Surname
 - Given names and/or initials
 - Years of birth and death
- Consideration should be given to reserving space for a second person's name and years of birth and death (if appropriate).
- Small pictures such as crosses, flowers, or animals may be etched within the boundaries, as long as the engravings are consistent with the dignity of the cemetery.
- Vases or other protruding ornamentation shall not be mounted on niche doors.

Meeting with Cemetery Services is done by appointment only

For more information or to book an appointment, please contact the Cemetery Services Department at 780-459-1500 or email cemetery@stalbert.ca.

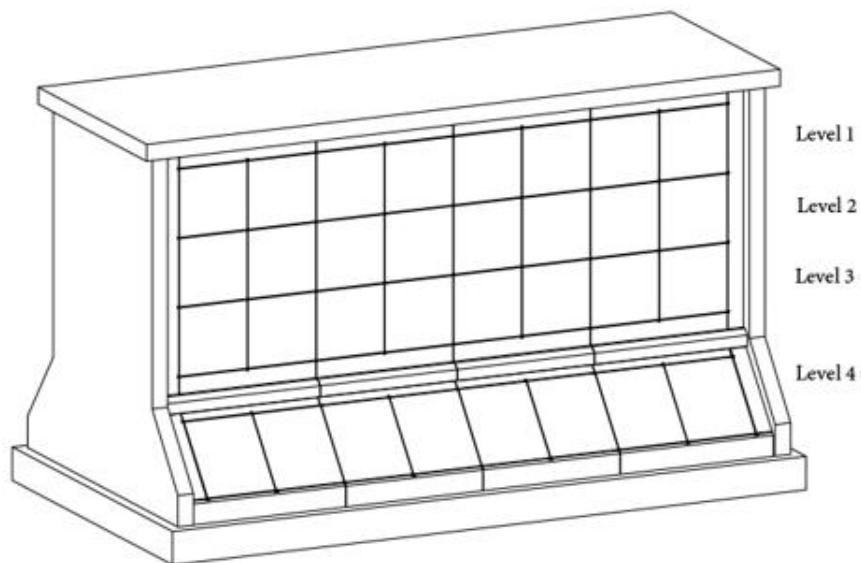
ST. ALBERT MUNICIPAL CEMETERY

Size Specifications

Location	Approx. Niche Door Dimensions	Approx. Interior Dimensions
Columbarium A, B & C		
All levels	11 $\frac{3}{4}$ " W x 11 $\frac{3}{4}$ " H	11 $\frac{1}{2}$ " W x 11 $\frac{1}{2}$ " H x 17 $\frac{1}{2}$ " D
Columbarium D & E		
Top Levels (1, 2, 3)	13 $\frac{1}{4}$ " W x 12 $\frac{1}{2}$ " H	11 $\frac{3}{4}$ " H x 11 $\frac{3}{4}$ " W x 16" D*
Bottom Level (Ascension)	13" W x 15" H	See diagram attached
Columbarium F & G, H & I		
Top Levels (1, 2, 3)	13 $\frac{1}{8}$ " W x 12 $\frac{1}{4}$ " H	11 $\frac{3}{4}$ " H x 11 $\frac{3}{4}$ " W x 16" D*
Bottom Level (Ascension)	13" W x 15" H	See diagram attached

* Niche tapers down to 11 $\frac{5}{16}$ " square at the back.

Columbarium Diagram

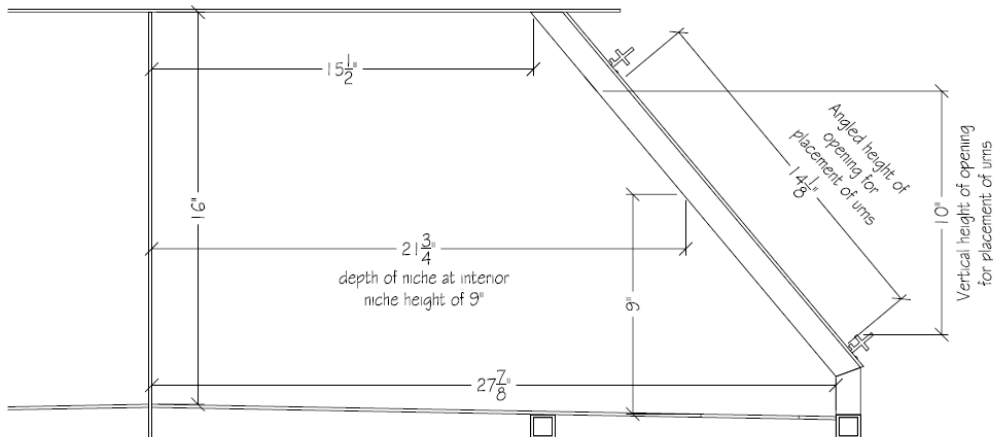


Meeting with Cemetery Services is done by appointment only

For more information or to book an appointment, please contact the Cemetery Services Department at 780-459-1500 or email cemetery@stalbert.ca.

ST. ALBERT MUNICIPAL CEMETERY

Niche – Level 4 Diagram



Interior Niche Dimensions for angled bottom row 'Ascension niches'.

Width of interior niche is 13"

Double Depth Standard Plot and Marker

- Double Depth gravesite is 4' x 9'.
- The plot will accommodate two caskets – first burial – 10 feet; second burial – 6 feet.
- It is a mandatory requirement for all full casket burials that a concrete liner (purchased through the City) or a vault (supplied through the funeral home) is used when the casket is buried.
- Standard Plot Flat Marker dimensions can be up to 39" x 18". No minimum size requirements.
- Two markers are permitted.

Standard Plot and Marker

- Standard gravesite is 4' x 9'.
- Standard plot will accommodate one casket.
- It is a mandatory requirement for all full casket burials that a concrete liner (purchased through the City) or a vault (supplied through the funeral home) is used when the casket is buried.
- Standard Plot Flat Marker dimensions can be up to 39" x 18". No minimum size requirements.
- Two markers are permitted.

Meeting with Cemetery Services is done by appointment only

For more information or to book an appointment, please contact the Cemetery Services Department at 780-459-1500 or email cemetery@stalbert.ca.

ST. ALBERT MUNICIPAL CEMETERY

Standard Side-By-Side Plots and Marker

- Standard gravesite is 4' x 9'.
- It is a mandatory requirement for all full casket burials that a concrete liner (purchased through the City) or a vault (supplied through the funeral home) is used when the casket is buried.
- Standard Plot Flat Marker dimensions can be up to 39" x 18" OR If using a single marker across the two plots, maximum dimensions of the marker can be up to 42" x 18". No minimum size requirements.
- Two markers are permitted.

Scattering Garden

- Scattering the ashes of a loved one can be a meaningful way to remember a family member and return them to nature.
- The City of St. Albert offers a dedicated rock garden area for this purpose.
- Permission needs to be granted by the City of St. Albert before the spreading of ashes can occur. Please contact the Cemetery Service Department to make arrangements for an Ash scattering as a copy of the Burial Permit and/or Certificate of Cremation must be provided in advance.



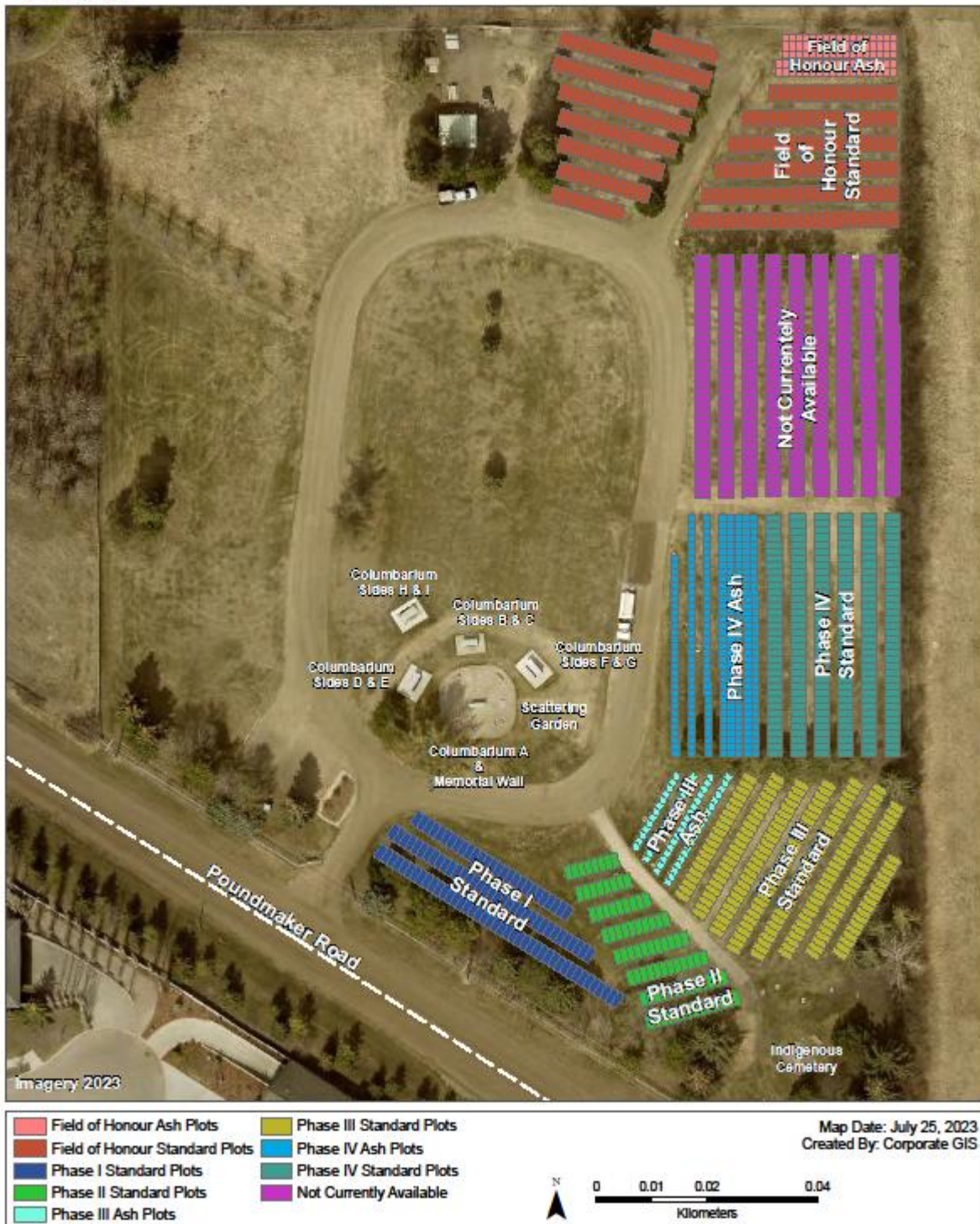
Meeting with Cemetery Services is done by appointment only

For more information or to book an appointment, please contact the Cemetery Services Department at 780-459-1500 or email cemetery@stalbert.ca.

ST. ALBERT MUNICIPAL CEMETERY



City of St. Albert Cemetery



ST. ALBERT MUNICIPAL CEMETERY

2024 CEMETERY FEES

Burial Rights	
Standard Plot - Adult	\$1,750.00
Standard Plot - Child (<i>Under 6</i>)	\$700.00
Ash Plot - Adult	\$825.00
Ash Plot - Child (<i>Under 6</i>)	\$330.00
Field of Honour – Standard Plot	\$875.00
Field of Honour – Ash Plot	\$413.00
Indigent - Standard Plot	\$875.00
Indigent - Ash Plot	\$413.00
Columbarium B/C Niche (<i>Top & Bottom Rows</i>)	\$2,070.00
Columbarium D/E/F/G/H/I Niche (<i>Level 1</i>)	\$2,420.00
Columbarium D/E/F/G/H/I Niche (<i>Level 2</i>)	\$2,225.00
Columbarium D/E/F/G/H/I Niche (<i>Level 3</i>)	\$2,070.00
Columbarium D/E/F/G/H/I Niche (<i>Level 4</i>)	\$2,600.00
Memorial Wall	Sold Out
Memorial Pillow with Plaque Installation	\$320.00

Interment (<i>Opening and Closing</i>)	
Standard Plot - (Adult/FoH/Indigent)	\$1,010.00
Standard Plot - Child	\$440.00
Standard Double Depth (10ft depth)	\$1,320.00
Standard Double Depth (6ft depth)	\$1,010.00
Ash Plot (Adult/Child/FoH/Indigent)	\$530.00
Columbarium Niche	\$140.00
Ash Scattering	\$110.00

Marker Installation	
Concrete Base Installation	\$480.00
Vase Installation	\$215.00

Liners	
Standard (Concrete)	\$810.00
Child (Concrete)	\$710.00

Disinterment	
Standard Plot - Adult	By Quote
Standard Double Depth Plot	By Quote
Ash Plot - Adult	\$915.00
Columbarium Niche	\$140.00
Standard/Ash Plot - Child	\$850.00

Surcharge	
Niche Door Replacement	\$440.00
Ground Burials after 3:00 p.m. or Weekends/Statutory Holidays	\$570.00
Niche Burials after 3:00 p.m. or Weekends/Statutory Holidays	\$320.00
Return Fee	\$75.00
Transfer of Ownership Fee	\$75.00

ST. ALBERT MUNICIPAL CEMETERY

FREQUENTLY ASKED QUESTIONS

Were do I go to purchase a plot or arrange for interment services?

The City of St. Albert's Cemetery Services department is located at Liggett Place, 235 Carnegie Drive.

Meetings with cemetery staff are by appointment only. Please contact Cemetery Services at 780-459-1500 for more information or to book an appointment.

How much notice do we need to provide for a burial service to take place?

The Public Works department requires 72 working hours (3 full business days) notice before the scheduled burial service is to take place.

Where is the cemetery located at?

The cemetery is located at 25116 Poundmaker Road. Directions can be found on the website at www.stalbert.ca/cemetery.

What happens when graves have settled?

The Public Works department typically does sodding on graves that have settled every spring. If you have questions or concerns regarding the condition of your loved one's grave, please do hesitate to contact the Cemetery Office.

How wide/deep are the Ash Plots?

Public Works use a 16" auger and they auger down to 3.0'. Therefore, ash holes are 16" wide x 3' deep. The ash plot is 4 feet by 4 feet.

What is size of a Standard Plot?

A standard burial plot is 4 feet by 9 feet.

Can I plant a tree, shrub or flowers on a gravesite?

No. For maintenance purposes, we do not allow anyone to plant permanent items on graves. For more details, please see the Cemetery Bylaw.

Can I place borders, fences, railing, walls, curbs, iron wire works on a gravesite?

No. For maintenance purposes, we do not allow anyone to erect fences/borders on graves. For more details, please see the Cemetery Bylaw.

Who makes the Marker Installation border?

The Public Works department are the only individuals permitted to pour concrete foundations, which are customized to the flat marker.

ST. ALBERT MUNICIPAL CEMETERY

FREQUENTLY ASKED QUESTIONS CONTINUED

Is there a Field of Honour?

Yes. The family must provide proper documentation of service. "If they are unable to pay for the burial costs, Veteran's Affairs currently offers the Last Post Fund which ensures that no Veteran is denied a dignified funeral and burial, as well as a military gravestone, due to insufficient funds at time of death." Veterans Affairs Canada Funeral and Burial Program - Last Post Fund.

What type of markers can be installed within the Cemetery?

All markers must be flat and made out of enduring material. There is no minimum size and they can be as large as 39" x 18". The thickness can be between 2 to 4 inches.

What hours is the Cemetery open?

The Cemetery is open to the public seven days a week.

How many Urns can be placed in a Columbarium Niche?

The first three levels of the newest columbarium can hold two (2) urns provided that the urns are at least 2.5 centimeters from each adjacent container or the niche walls. The lower level of the columbarium can hold up to three (3) urns.

Can vases be attached to a Niche Door?

No – no vases or other protruding ornamentation shall not be mounted on niche doors.

Besides a cemetery, where else can I scatter ashes?

"In Alberta, as with most of Canada, there are no actual laws pertaining to the scattering of cremated remains. However, there are some guidelines that should be followed. In all cases, permission should be obtained prior to scattering. Scattering is permitted on any Crown land, including in provincial parks prohibit the scattering of cremated remains in water, although you may "cast them to the wind" without obtaining permission. You may also scatter cremated remains in most municipal parks and cemeteries but only with permission from the municipality. When scattering cremated remains on private property, it is important to obtain permission from the owner of the land prior to the scattering. In any case, when scattering cremated remains, it is recommended that the scattering is done with discretion." Alberta Funeral Services Regulatory Board.

Can a municipality put the complete cemetery record, such as names, dates of births and deaths, and locations of burial sites, on a web page?

This information is personal information of individuals. The disclosure would be an unreasonable invasion of privacy if the individuals have been dead for less than 25 years (section 17(2)(i) of the FOIP Act). Disclosures of this information should be considered on a case-by-case basis.